



Guide Price
£500,000

Freehold

4x  3x  1x 

**First Avenue,
Gillingham, Kent, ME7**

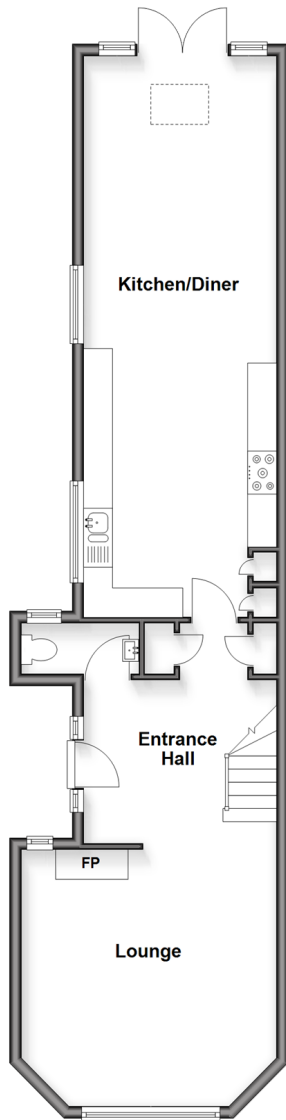
OVER 60?

Secure this property
for up to **59% less!**

Wards
Helping you move forwards

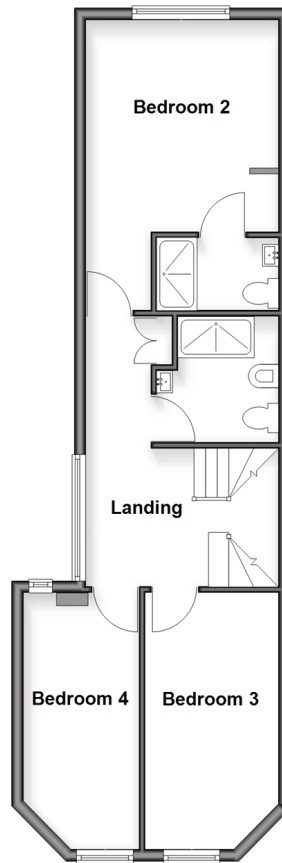
Ground Floor

Approx. 64.5 sq. metres (693.8 sq. feet)



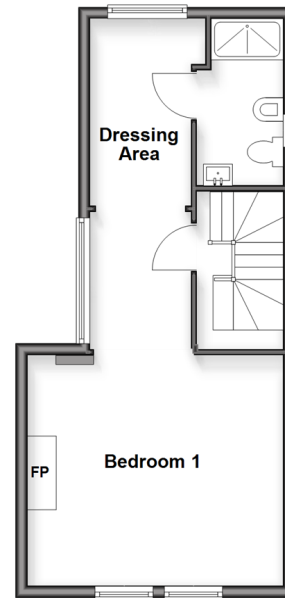
First Floor

Approx. 51.1 sq. metres (549.6 sq. feet)



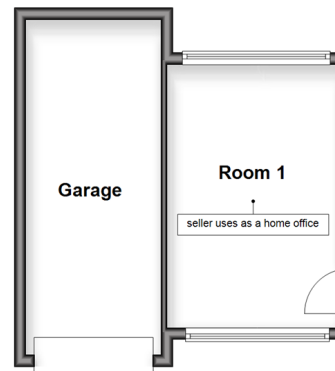
Second Floor

Approx. 36.4 sq. metres (391.3 sq. feet)



Outbuilding

Approx. 27.1 sq. metres (292.1 sq. feet)



Accommodation

GROUND FLOOR

Entrance Hall

Lounge: 14'4 x 13'5 (4.37m x 4.09m)

Cloakroom

Kitchen/Diner: 30'7 x 10'2 (9.33m x 3.10m)

FIRST FLOOR

Landing

Bedroom 3: 15'0 x 7'8 (4.58m x 2.34m)

Bedroom 4: 13'4 x 6'4 (4.07m x 1.93m)

Shower Room

Bedroom 2: 12'0 x 10'5 (3.66m x 3.18m)

En-suite Shower Room

SECOND FLOOR

Landing/Dressing Area

Bedroom 1: 14'6 x 11'7 (4.42m x 3.53m)

En-suite Shower Room

OUTBUILDING

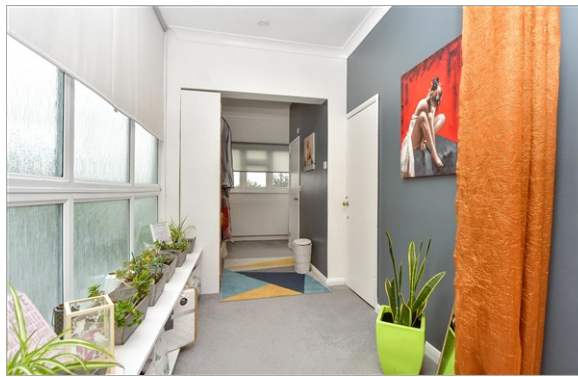
Room 1

Garage

OUTSIDE

Off Road Parking

Rear Garden



Main features

- Versatile garden room
- Off road parking for 2/3 cars and garage
- Situated in the sought after Upper Gillingham
- Luxurious master bedroom with en-suite and dressing room
- Superbly presented, much extended, spacious family home over 3 floors



Nearest Schools

Primary Schools: Woodlands Primary 0.5 miles, Barnsole Junior School 0.5 miles, Featherby Junior School 0.5 miles

Secondary Schools: The Robert Napier School 0.2 miles, Chatham Grammar School for Girls 0.5 miles



Transport Information

Train Stations: Gillingham 1.6 miles, Rainham 2.6 miles, Strood 2.9 miles



Address

First Avenue, Gillingham, Kent, ME7



Directions

For directions to this property please contact us.



Call Gillingham Branch 01634 851191 ■ wardsofkent.co.uk



- Legal advice should be taken to verify fixtures/fittings, planning, alterations and/or lease details
- Appliances & services are untested, dimensions are approximate and floor plans are not to scale
- Through a Homewise Home For Life Plan people aged 60+ can secure this property for up to 50% less, by purchasing a Lifetime Lease.



10927050/20250930/ML/GS