



4 Furnace Fields, Bishops Itchington

Southam

Offers Over **£575,000**





4 Furnace Fields

Bishops Itchington, Southam

Spacious four-bed detached home in Bishops Itchington, opposite nature reserve. Modern kitchen, study, en-suite, garage, garden, great village location, easy access to M40. Council Tax band: F

Tenure: Freehold

EPC Energy Efficiency Rating: B

EPC Environmental Impact Rating: B

- 4 bedroom detached family home
- Unique plot opposite the local nature reserve
- Off-road parking and garage
- Utility room
- Highly sought after location
- Separate downstairs study



Kitchen / Diner

20' 0" x 12' 10" (6.10m x 3.90m)

Living Room

17' 9" x 11' 10" (5.40m x 3.60m)

Utility Room

6' 7" x 5' 7" (2.00m x 1.70m)

Study

9' 2" x 7' 10" (2.80m x 2.40m)

WC

Master Bedroom

18' 4" x 11' 10" (5.60m x 3.60m)

En-suite

Bedroom 2

15' 3" x 8' 6" (4.66m x 2.59m)

Bedroom 3

11' 6" x 10' 2" (3.50m x 3.10m)

Bedroom 4

12' 6" x 8' 6" (3.80m x 2.60m)

Bathroom

9' 6" x 6' 3" (2.90m x 1.90m)





GARDEN

GARAGE

Single Garage

DRIVEWAY

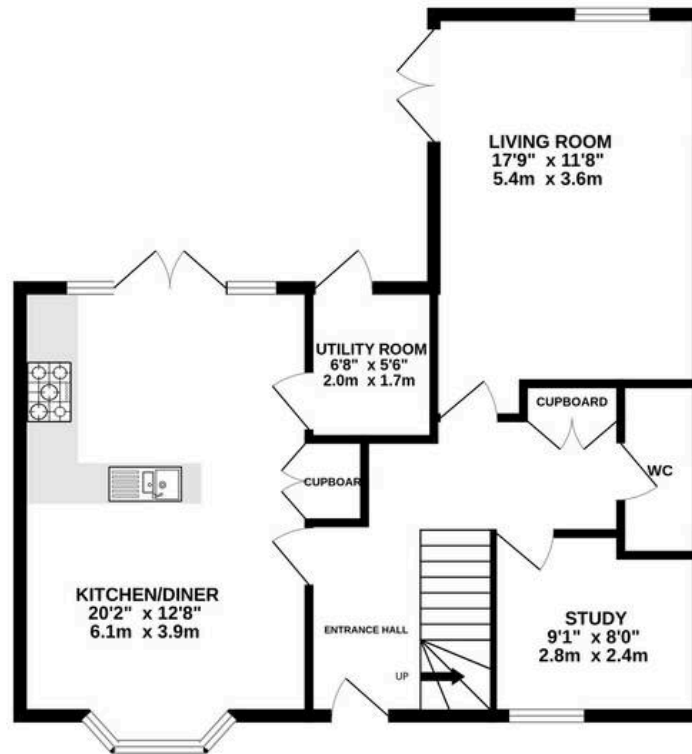
2 Parking Spaces



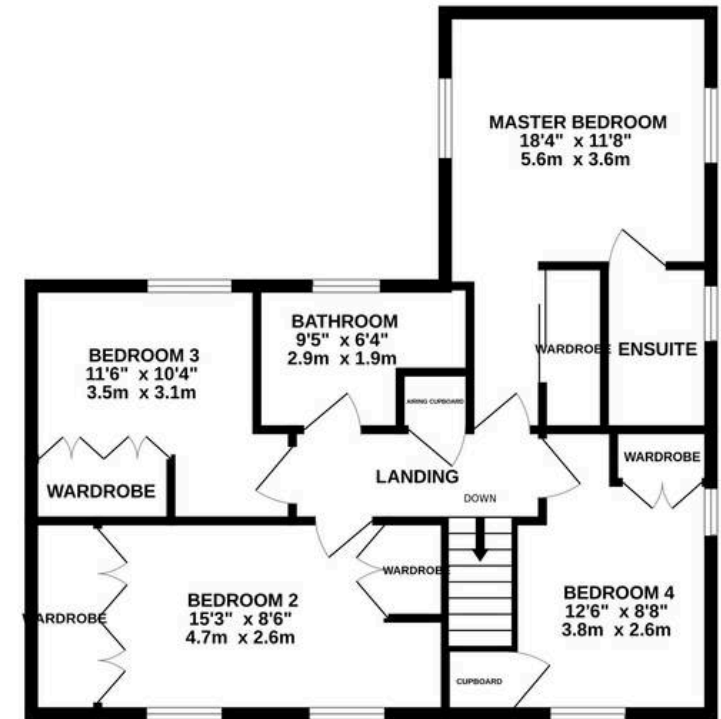




GROUND FLOOR
753 sq.ft. (70.0 sq.m.) approx.



1ST FLOOR
753 sq.ft. (70.0 sq.m.) approx.



TOTAL FLOOR AREA : 1507sq.ft. (140.0 sq.m.) approx.

Whilst every attempt has been made to ensure the accuracy of the floorplan contained here, measurements of doors, windows, rooms and any other items are approximate and no responsibility is taken for any error, omission or mis-statement. This plan is for illustrative purposes only and should be used as such by any prospective purchaser. The services, systems and appliances shown have not been tested and no guarantee as to their operability or efficiency can be given.
Made with Metropix ©2026





Hawthorn and Co

16 Hereburgh Way, Harbury - CV33 9NR

01926 919553

hello@hawthornandco.co.uk

<http://www.hawthornandco.co.uk>

