



## Haddington Road, Bromley, BR1 5RG

**£485,000 Freehold**

'Chain Free' three-bedroom semi detached house in a popular residential road perfectly positioned for green spaces including Forster Park, Shaftesbury Park and Beckenham Place Park, plus handy local shops and medical facilities, plus excellent transport links with frequent bus routes and Beckenham Hill and Grove Park stations under a mile away. The property also sits within catchment for several Ofsted Outstanding schools. Accommodation includes bright entrance hall, downstairs wet room, 22' x 11'3 (max) kitchen/diner and lounge with the three bedrooms, family bathroom with separate WC upstairs. To the rear is a South West facing garden with 20'7 x 19'10 detached double garage at the end. There are some cosmetic improvements to be made to personalise this fantastic family home.

## PORCH

Double glazed porch.

## ENTRANCE HALL 13'10 x 5'8 (4.22m x 1.73m)

Hardwood front door with windows either side leads into entrance hall. Radiator, half panelled walls, white stripped wood flooring and under stair storage cupboard.

## LOUNGE 12'6 x 11' (3.81m x 3.35m)



Double glazed window to front, radiator and cable TV points.

## KITCHEN/DINER 22' x 11'3 (max) (6.71m x 3.43m (max))



Double glazed windows, door to rear and Velux window to rear. Range of wooden wall and base units with wooden work surfaces over. Double sink with mixer tap and drainer, four ring gas hob with brushed steel extractor hood over and double oven below. Space for tall fridge freezer and breakfast bar. Large dining area with feature wall.

## UTILITY ROOM 5'9 x 4'3 (1.75m x 1.30m)

Wall mounted cupboard and Alpha combination boiler, worksurface with space for washing machine and tumble dryer under.

## WET ROOM 5'4 x 4'2 (1.63m x 1.27m)

Opaque double glazed window to front, radiator, fully tiled walls and floor. Wall mounted wash hand basin, low level WC and wall mounted Mira electric shower.

## LANDING

Opaque double glazed window to side and loft access hatch.

## BEDROOM ONE 12'6 x 11'5 (3.81m x 3.48m)



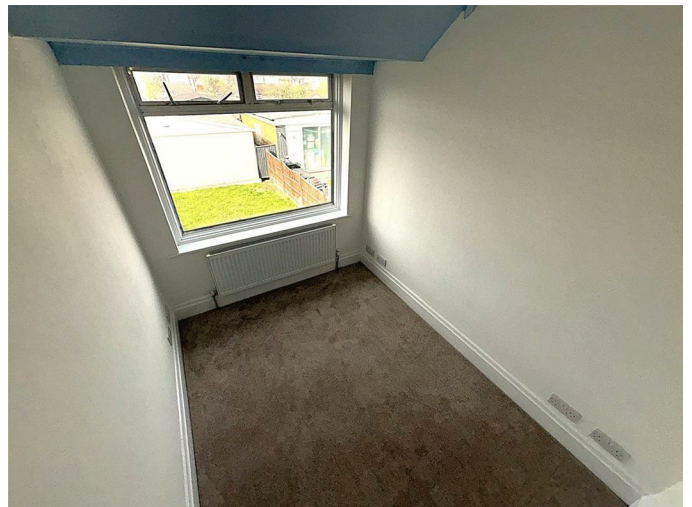
Double glazed window to front and radiator.

## BEDROOM TWO 10'8 x 10'6 (3.25m x 3.20m)



Double glazed window to rear and radiator.

## BEDROOM THREE 8'7 x 6'6 (2.62m x 1.98m)



Double glazed window to rear and radiator.

**FAMILY BATHROOM 5'10 x 5'6 (1.78m x 1.68m)**



Opaque double glazed windows to front and side. Panel bath with shower mixer tap. shower over with wall mounted controls and fully tiled walls. Wall mounted wash hand basin with mono bloc mixer tap and local tiling, chrome ladder towel warmer and vinyl tiled floor.

**REAR GARDEN approx 40' (approx 12.19m)**



South West facing rear garden with to laid lawn area with detached double garage to rear.

**DETACHED DOUBLE GARAGE 20'7 x 19'10 (6.27m x 6.05m)**



Personal door to garden. Up and over door to access road, power and light.

**FRONTAGE**

Steps up and path to front door with laid lawn areas either side.

**TOTAL FLOOR AREA**

The internal area as per the Energy Performance Certificate is 87sqm (Approx. 937sqft)

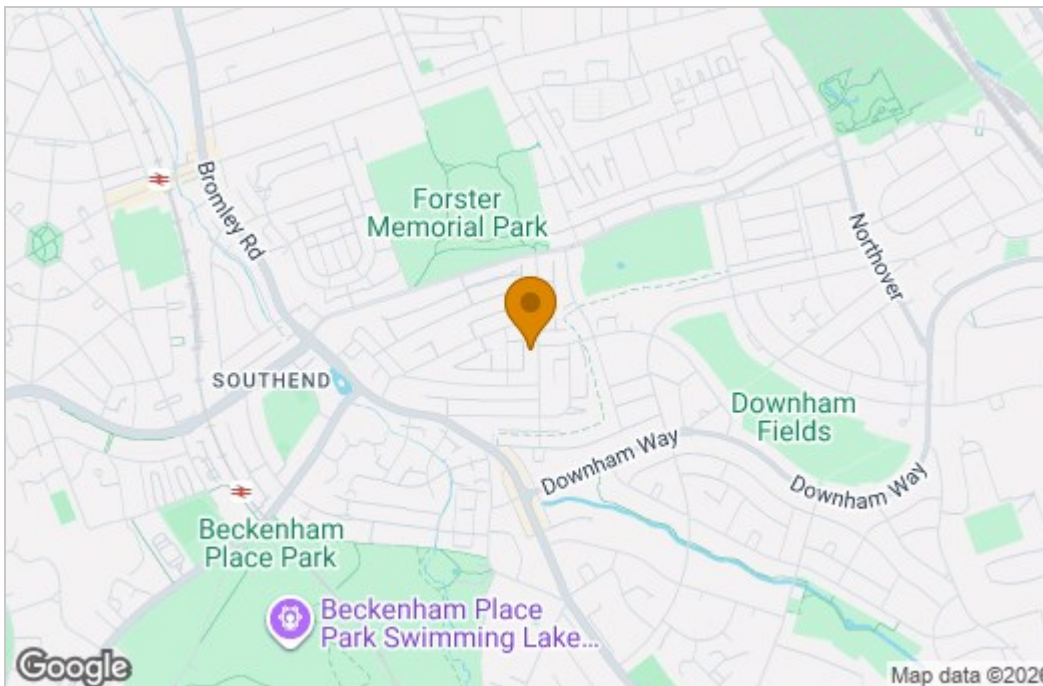
**COUNCIL TAX BAND 'D'**

# Floor Plan

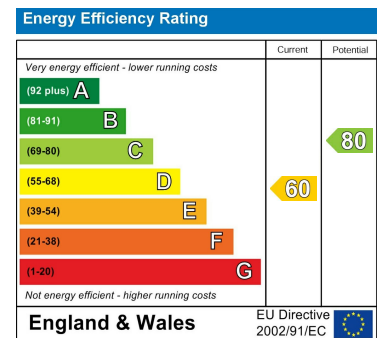


Whilst every attempt has been made to ensure the accuracy of the floorplans contained here, measurements of doors, windows, rooms and any other items are approximate and no responsibility is taken for any error, omission or mis-statement. This plan is for illustrative purposes only and should be used as such by any prospective purchaser. The services, systems and appliances shown have not been tested and no guarantee as to their operability or efficiency can be given.  
Made with Metropix ©2026

# Area Map



# Energy Efficiency Graph



These particulars, whilst believed to be accurate are set out as a general outline only for guidance and do not constitute any part of an offer or contract. Intending purchasers should not rely on them as statements of representation of fact, but must satisfy themselves by inspection or otherwise as to their accuracy. No person in this firm's employment has the authority to make or give any representation or warranty in respect of the property.