



JOWEBSTER

22 Stone Hall
Kensington Green, W8



Property Attributes

- 2 Bedrooms
- 2 Bathrooms
- Off Street Parking
- Immaculate Presentation
- Landscaped Communal Gardens
- Gym
- 24/7 Security



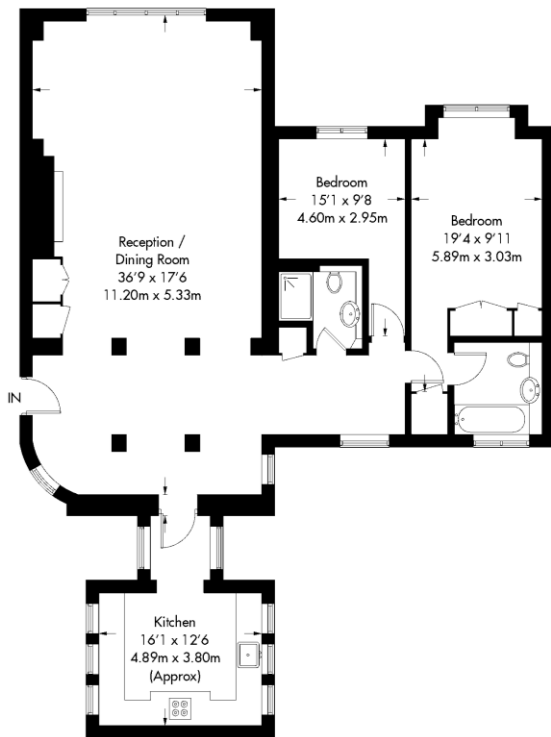
Terms

- Price: £2,000,000
- Borough: Royal Borough of Kensington And Chelsea
- Tenure: Share of Freehold approx. 960 years remaining
- Service Charge: £16,127 per annum
- Ground Rent: £304 per annum
- Council Tax Band: Band H



Stone Hall

Approximate Gross Internal Area = 120.3 sq m / 1295 sq ft



Second Floor

Not to scale, for guidance only and must not be relied upon as a statement of fact.
All measurements and areas are approximate only and have been prepared in
accordance with the current edition of the RICS Code of Measuring Practice.

+44 (0) 20 7349 7055
sales@jowebster.com

Misdescription Act

We wish to advise prospective purchasers that these sales particulars are believed to be correct, but their accuracy is in no way guaranteed, nor do they form any part of contract. We have not carried out a detailed survey nor tested the services, appliances or specific fittings. Measurements are approximate.