

**LONDON  
VICTORIA  
GROUPS** 



**LONDON  
VICTORIA  
GROUPS** 



**LONDON  
VICTORIA  
GROUPS** 



**LONDON  
VICTORIA  
GROUPS** 

## Higham House East, 100 Carnwath Road

, London SW6 3HW

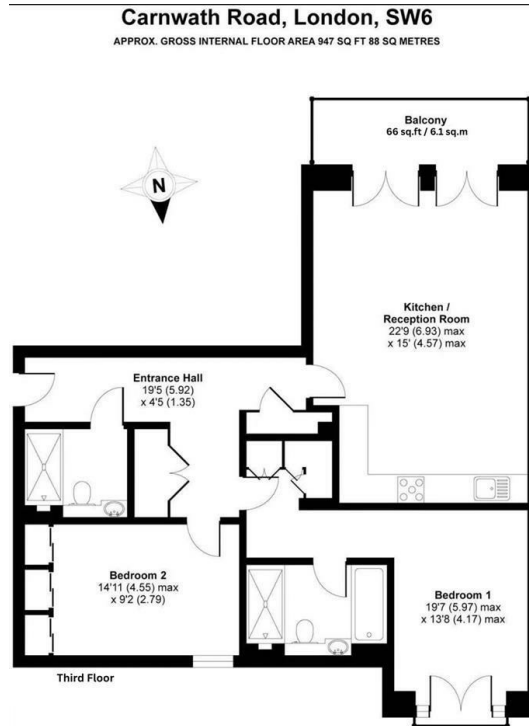
- Two-bedroom, two-bathroom apartment
- Modern, fully fitted kitchen with integrated appliances
- Lift access
- EPC-B
- Open-plan living and dining area
- Secure entry system
- Imperial Wharf Station (Overground) is within easy reach
- CTB-F

**£3,150 Per Month**



**LONDON  
VICTORIA  
GROUPS** 

Local Authority **Hammersmith  
And Fulham**  
Council Tax Band **F**  
EPC Rating **B**



Whilst every attempt has been made to ensure the accuracy of the floor plan contained here, measurements of doors, windows and rooms are approximate and no responsibility is taken for any error, omission or misstatement. These plans are for representation purposes only as defined by RICS Code of Measuring Practice and should be used as such by any prospective purchaser. Specifically no guarantee is given on the total square footage of the property if quoted on this plan. Any figure given is for initial guidance only and should not be relied on as a basis of valuation.  
Copyright nishcom on uk 2016 Produced for Fraser & Co REF - 122360

**London Office Office**  
Spaces Victoria, 25 Wilton Road, Pimlico,  
London, SW1V 1LW

**Contact**  
020 3084 3094  
XL@londonvictoriagroups.co.uk  
www.londonvictoriagroups.co.uk

Agents Note: Whilst every care has been taken to prepare these particulars, they are for guidance purposes only. All measurements are approximate and for general guidance purposes only and whilst every care has been taken to ensure accuracy, they should not be relied upon and potential buyers/tenants are advised to recheck the measurements.

