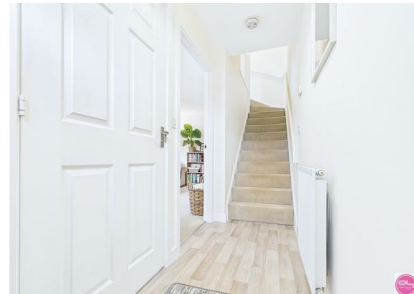


Gilliver Close, Burton-On-Trent, DE14 2FL

£180,000

Council Tax Band: B





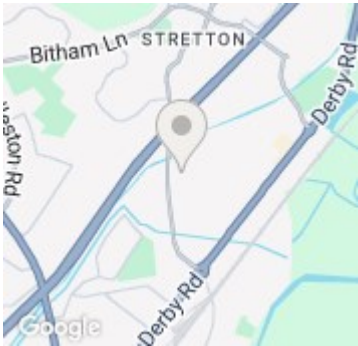
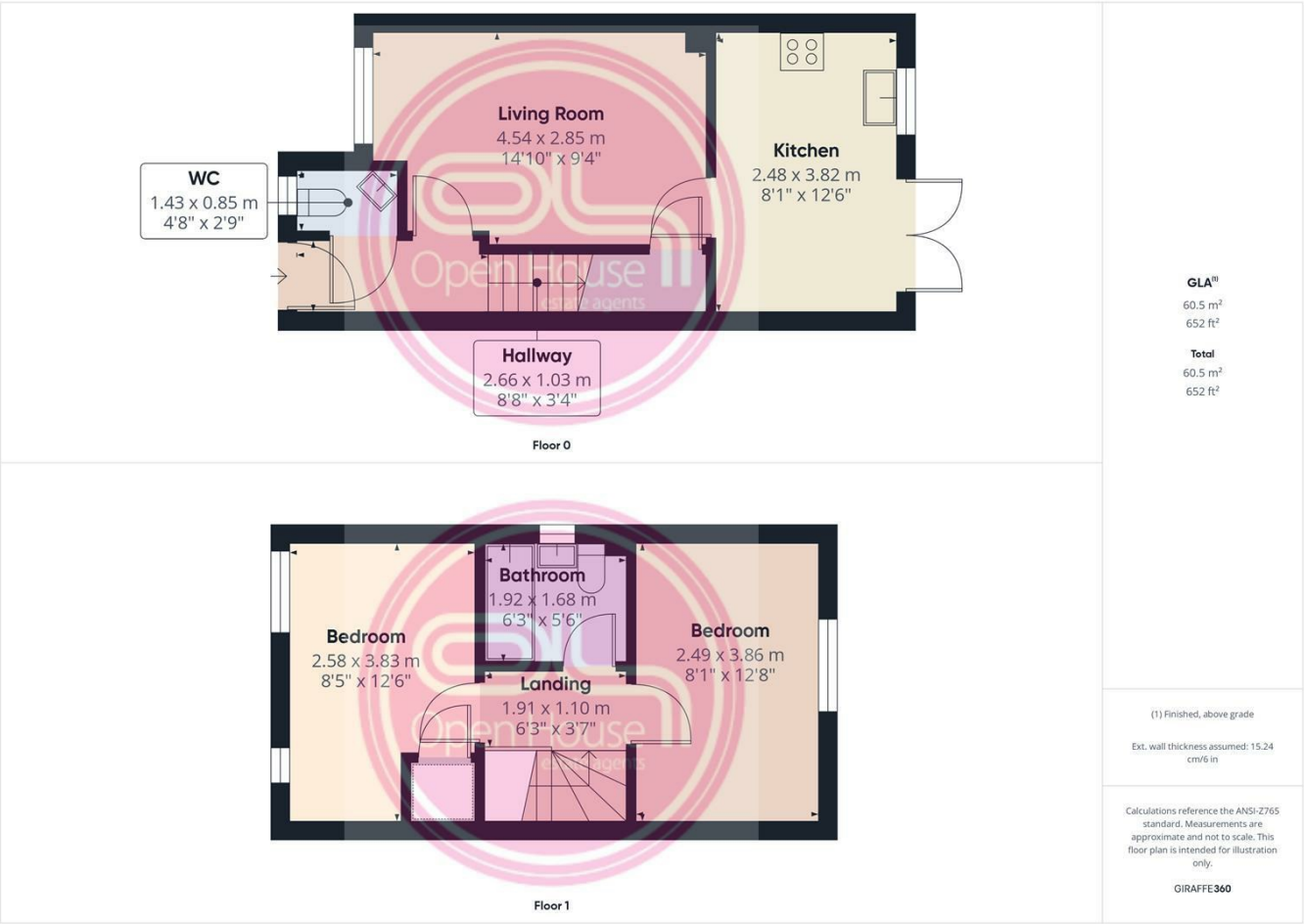
This stunning two-bedroom semi-detached home is beautifully presented throughout and enjoys a peaceful position on a cul-de-sac directly opposite open green space on a modern development.

Perfect for first-time buyers, professionals, or downsizers seeking a move-in ready home, the property combines contemporary design with a superb layout and an immaculate finish inside and out.

Situated close to local shops, parks, schools, and transport connections for Burton-on-Trent, Derby, and the A38, this is an ideal home for those wanting a quiet yet convenient location.



Open House Burton & Swadlincote



Energy Efficiency Rating		
	Current	Potential
Very energy efficient - lower running costs		
(92 plus) <b>A</b>		96
(81-91) <b>B</b>	82	
(69-80) <b>C</b>		
(55-68) <b>D</b>		
(39-54) <b>E</b>		
(21-38) <b>F</b>		
(1-20) <b>G</b>		
Not energy efficient - higher running costs		
England & Wales	EU Directive 2002/91/EC	