



Windmill Drive, SW4

£5,000 Per calendar month

A substantial three double bedroom property which has been finished to a high specification throughout and provides a spacious living space, ideal for a family.

Located on Clapham Common and on the exclusive Windmill Drive, the property is near to many local amenities in Clapham, Battersea and Abbeville Village.

Features

- Three Double Bedrooms
- Large Reception Room
- Eat-In Kitchen
- Two Floors
- Two Bathrooms
- Private Garden



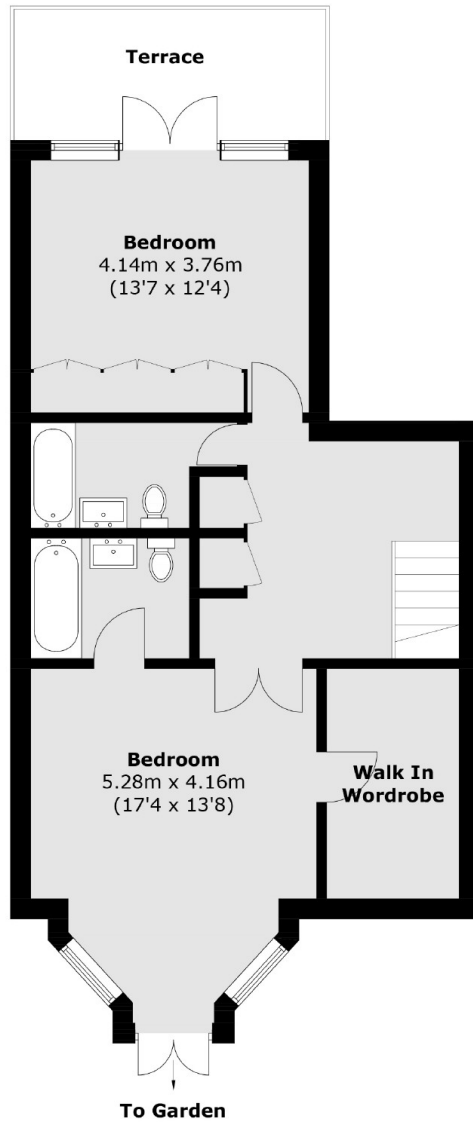
Windmill Drive, SW4

The property is set over two floors, ground and lower ground. There is an attractive reception room with feature fireplace, a kitchen/dining area, three double bedrooms, two bathrooms and a dressing room.

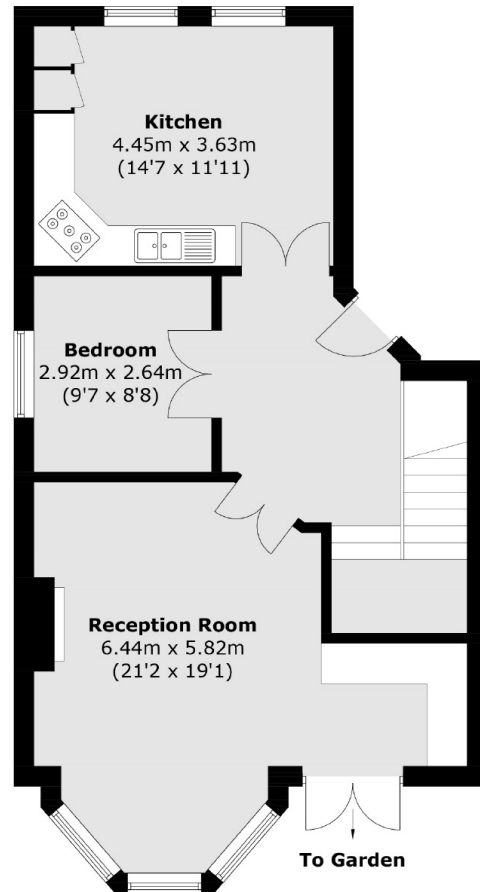
You'll also find a large garden and terrace area at both the front and rear of the property.



Windmill Drive,
London, SW4



Lower Ground Floor



Ground Floor

Total area (approx.): 130.7 sq. m (1406.9 sq. ft)
Terrace : 9.0 sq. m (96.9 sq. ft)