



High Street, Heanor

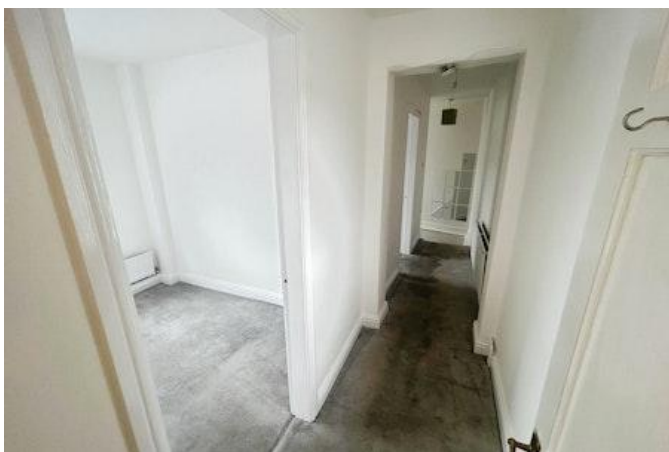
£825 PCM



Key Features

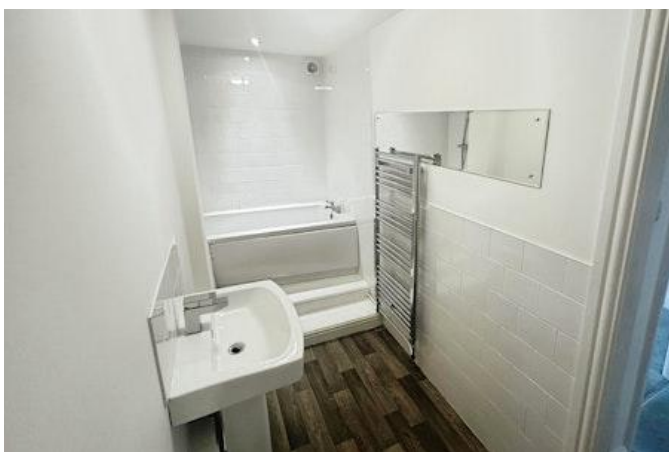
- Terraced House
- Two Bedrooms
- Modern Kitchen & Bathroom
- Private Rear Courtyard
- Available 15th May 2026
- Holding Deposit £190
- Local Amenities
- EPC rating D





A well-presented and recently refurbished two-bedroom terraced property located in the heart of Heanor, close to local amenities, transport links and shops.

Offered unfurnished and available from 15th May 2026, this modern home has been finished in neutral tones throughout and would suit professionals, couples or small families looking for a low-maintenance property ready to move straight into.



The ground floor comprises a modern fitted kitchen with a range of wall and base units, leading through to a spacious living area with character ceiling beams and access to the enclosed rear courtyard/patio area.

To the first floor are two bedrooms, including a generous double bedroom and a further single bedroom ideal as a nursery, dressing room or home office, along with a contemporary family bathroom fitted with a modern white suite and heated towel rail.

Externally, the property benefits from an enclosed rear courtyard providing useful outdoor space.

Early viewing is highly recommended.



Kitchen

Modern fitted kitchen featuring matching wall and base units, wood-effect worktops, tiled splashbacks, integrated oven and hob, sink/drainer and space for additional appliances. Access to the rear courtyard.

Living Room

Spacious reception room with neutral décor, fitted carpet and character exposed ceiling beams creating a warm and inviting living space.

Courtyard

Enclosed rear patio/courtyard area providing a low-maintenance outdoor space.

Bedroom 1

Good-sized double bedroom with fitted carpet, neutral walls and front-facing window allowing plenty of natural light.

Bedroom 2

Single bedroom ideal for a child's room, dressing room or home office, finished in neutral décor with fitted carpet.

Bathroom

Modern family bathroom comprising bath with shower over, wash basin, WC, tiled walls and heated towel rail.

Disclaimer

All property details, photographs and floorplans are for guidance only and may be subject to change. Items shown in photos may vary depending on availability and condition at the start of a tenancy. Prospective tenants are advised to confirm the specifics of the property on application. All tenancies are subject to referencing and contract.

