

Jukes & Co

Estate Agents



Lancaster Road

, London, SE25 4BJ

£300,000



A beautiful and spacious first-floor maisonette with its own private front door and own good size garden. This well-presented home offers a perfect blend of comfort and style. The property features a modern fitted kitchen, a bright and generously sized lounge ideal for relaxing or entertaining, elegant wood flooring throughout, and a large double bedroom. A contemporary bathroom suite and ample built-in storage complete this attractive home.

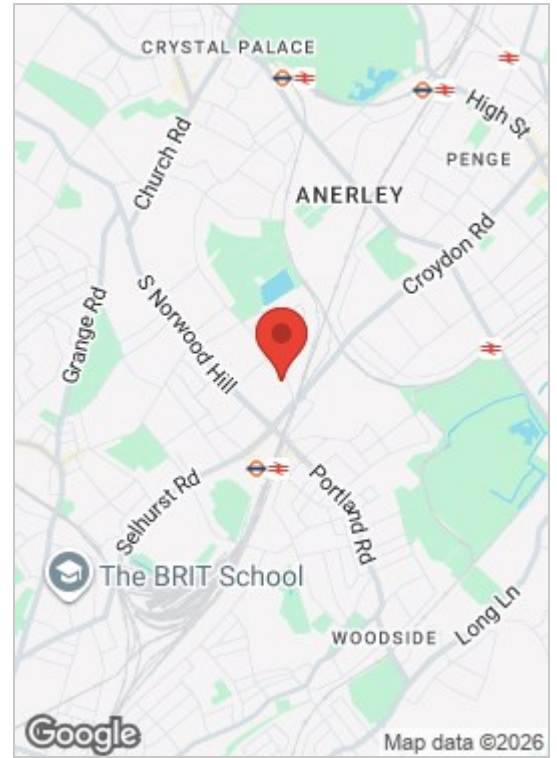
Ideally located within easy walking distance of Norwood Junction railway station, the property benefits from excellent transport links, including fast and direct services to London Bridge station in approximately 12 minutes—perfect for commuters seeking quick access to central London.

Residents can also enjoy being just a short stroll from South Norwood Lake and Grounds, a much-loved local green space featuring a picturesque lake, walking paths, and open areas ideal for relaxing, exercise, or weekend leisure.

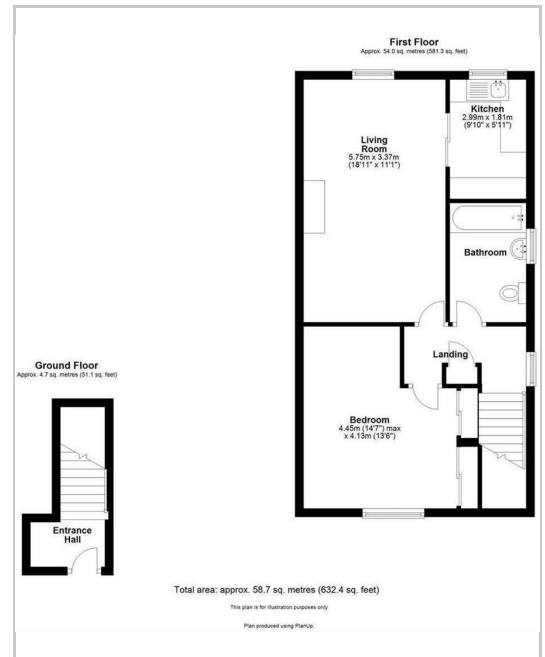
In addition, South Norwood High Street is close by, offering a variety of local shops, cafés, restaurants, and everyday amenities, creating a vibrant and convenient neighbourhood setting.



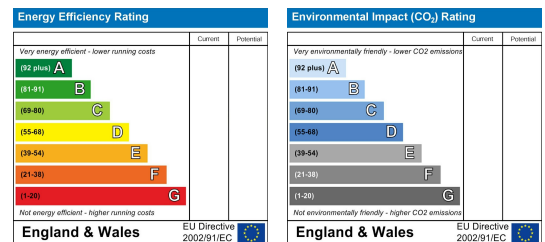
Area Map



Floor Plan



Energy Efficiency Graph



These particulars, whilst believed to be accurate are set out as a general outline only for guidance and do not constitute any part of an offer or contract. Intending purchasers should not rely on them as statements of representation of fact, but must satisfy themselves by inspection or otherwise as to their accuracy. No person in this firm's employment has the authority to make or give any representation or warranty in respect of the property.

Sales and Lettings

76 High Street, South Norwood, London SE25 6EB

T: 020 8653 9393 · F: 020 8771 5551 · E: sales@jukesestateagents.com · E: lettings@jukesestateagents.com

W: jukesestateagents.com