



*jordan fishwick*

Saltersway Lane Whaley Bridge High Peak



## Saltersway Lane Whaley Bridge High Peak SK23 7GT

£400,000



### The Property

Lovely views and an open forward aspect on the fringe of the Midshire Meadows development in Whaley Bridge, a stunning, 2024 Barrett built, three-bedroom detached family home. Occupying an enviable position with walled private gardens, driveway and detached garage. Offered for sale with the remaining NHBC warranty, this FREEHOLD property offers high energy efficiency resulting in lower running costs! Comprising: entrance hall, wc, living room, fitted dining kitchen with French doors, first floor master bedroom with en-suite shower room, two further bedrooms (all with lovely views) and a family bathroom. Viewing highly recommended.



- Open Forward Aspect
- Sought After Modern Development
- Corner Position With Views
- Three Bedroom Detached Home
- Walled Private Garden
- Driveway and Detached Garage
- Immaculately Presented Throughout
- High Energy Efficiency (Band B)
- Remaining 8 Years of NHBC Warranty
- Freehold

**Postcode** SK23 7GT

**EPC Rating** B

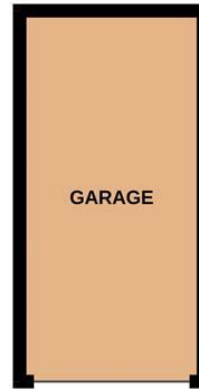
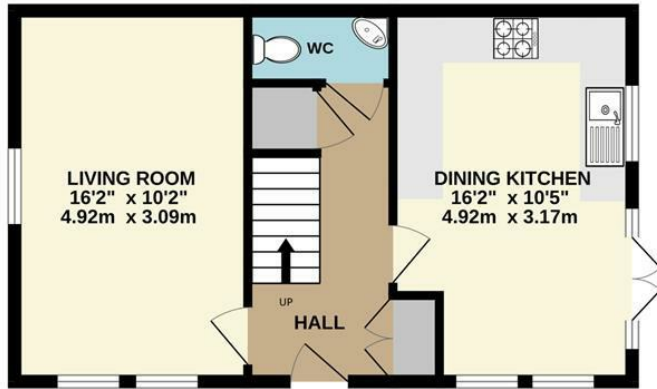
**Local Authority** High Peak

**Council Tax** C

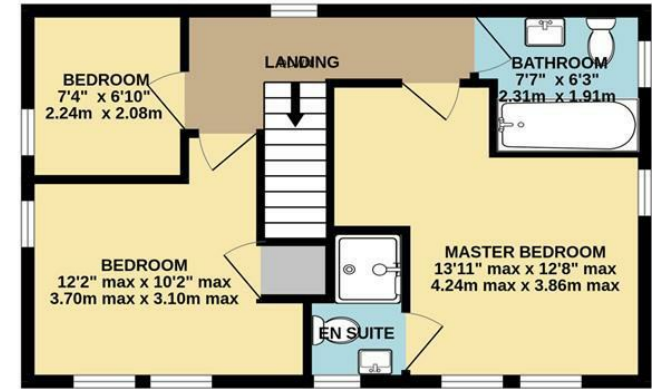
Energy Efficiency Rating		Current	Potential
Very energy efficient - lower running costs			
(92 plus)	A		95
(81-91)	B	83	
(69-80)	C		
(55-68)	D		
(39-54)	E		
(21-38)	F		
(1-20)	G		
Not energy efficient - higher running costs			
<b>England &amp; Wales</b>			EU Directive 2002/91/EC



GROUND FLOOR



1ST FLOOR



Whilst every attempt has been made to ensure the accuracy of the floorplan contained here, measurements of doors, windows, rooms and any other items are approximate and no responsibility is taken for any error, omission or mis-statement. This plan is for illustrative purposes only and should be used as such by any prospective purchaser. The services, systems and appliances shown have not been tested and no guarantee as to their operability or efficiency can be given.  
Made with Metropix ©2026



These particulars are believed to be accurate but they are not guaranteed and do not form a contract. Neither Jordan Fishwick nor the vendor or lessor accept any responsibility in respect of these particulars, which are not intended to be statements or representations of fact and any intending purchaser or lessee must satisfy himself by inspection or otherwise as to the correctness of each of the statements contained in these particulars. Any floorplans on this brochure are for illustrative purposes only and are not necessarily to scale.

Offices at: Chorlton, Didsbury, Disley, Hale, Glossop, Macclesfield, Manchester Deansgate, Manchester Whitworth Street, New Mills, Sale, Wilmslow and Withington

14 Market St, Disley, Cheshire, Stockport SK12 2AA

01663 767878

disley@jordanfishwick.co.uk

www.jordanfishwick.co.uk