



Teesdale Road, Wirral CH63 3AS

welcome to

Teesdale Road, Wirral

This four-bedroom semi-detached house is a must see. Situated in a prime locale for reputable schools, both primary and secondary, boasting a private garden and dormer loft conversion with ensuite. The large driveway lends itself to multiple cars.



Property Description

Entering the property you're greeted by an inviting hallway, with kitchen to the rear and living-through room on the left. Once two reception rooms, it has now been opened with an arch between. The living room boasts bay windows, flooding the room with natural light, through the arch, this reception room offers double patio doors into the garden and is perfectly suited as a dining room. The kitchen offers ample counter and cupboard space for all your culinary needs, while also benefiting from a utility space behind it. There is lots of potential for the kitchen to be knocked into the utility or second reception room to create a kitchen/diner.

Heading upstairs, are two double bedrooms the front, also benefitting from bay windows. The final bedroom on this floor is a generously sized single. Servicing this floor is a three-piece bathroom suite. The loft extension is done to building regs, boasting a large double bedroom with shower room ensuite. There is still plenty of storage in the eaves.

Externally, the rear garden offers patio space surrounding the house while the rest is laid to lawn, side access leads through to the front. The driveway can comfortably accommodate upwards of three cars.



view this property online [jonesandchapman.co.uk/Property/BEB110779](https://www.jonesandchapman.co.uk/Property/BEB110779)



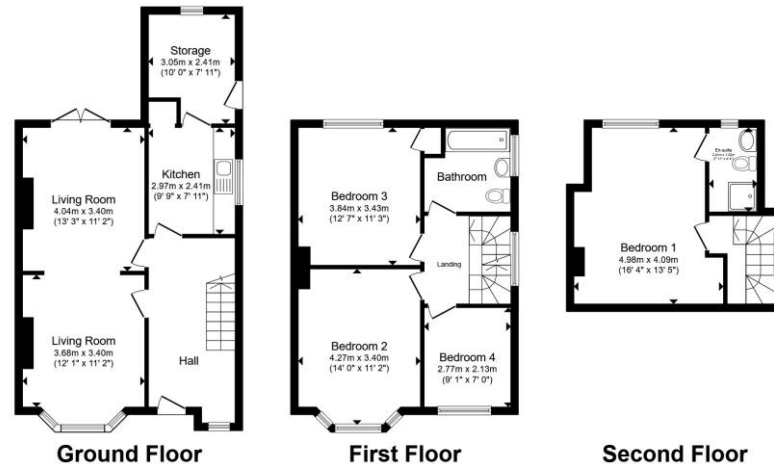
welcome to

Teesdale Road, Wirral

- Four bedrooms, one with ensuite
- Semi-detached family home
- Spacious driveway
- Private rear garden
- No onward chain

Tenure: Freehold EPC Rating: E
Council Tax Band: C

£300,000



Total floor area 127.4 m² (1,371 sq.ft.) approx
This floor plan is for illustrative purposes only. It is not drawn to scale. Any measurements, floor areas (including any total floor area), openings and orientation are approximate. No details are guaranteed, they cannot be relied upon for any purpose and they do not form part of any agreement. No liability is taken for any error, omission or misstatement. A party must rely upon its own inspection(s). Powered by www.propertybox.io

jones & chapman



Please note the marker reflects the postcode not the actual property

view this property online jonesandchapman.co.uk/Property/BEB110779



Property Ref:
BEB110779 - 0002

1. MONEY LAUNDERING REGULATIONS Intending purchasers will be asked to produce identification documentation at a later stage and we would ask for your co-operation in order that there is no delay in agreeing the sale. 2. These particulars do not constitute part or all of an offer or contract. 3. The measurements indicated are supplied for guidance only and as such must be considered incorrect. Potential buyers are advised to recheck measurements before committing to any expense. 4. We have not tested any apparatus, equipment, fixtures or services and it is in the buyers interest to check the working condition of any appliances. 5. Where an EPC, or a Home Report (Scotland only) is held for this property, it is available for inspection at the branch by appointment. If you require a printed version of a Home Report, you will need to pay a reasonable production charge reflecting printing and other costs. 6. We are not able to offer an opinion either written or verbal on the content of these reports and this must be obtained from your legal representative. 7. Whilst we take care in preparing these reports, a buyer should ensure that his/her legal representative confirms as soon as possible all matters relating to title including the extent and boundaries of the property and other important matters before exchange of contracts.

jones & chapman



0151 644 8666



Bebington@jonesandchapman.co.uk



4 Church Road, BEBINGTON, WIRRAL,
Merseyside, CH63 7PH



jonesandchapman.co.uk