



Denbigh Road, W13

£419,950

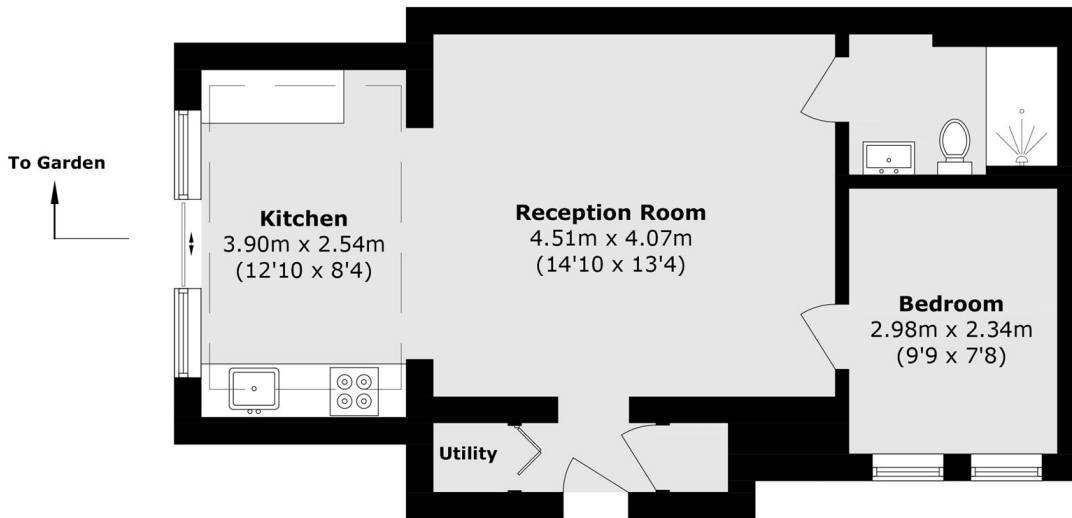
A well-presented one-bedroom ground floor maisonette offered to the market with no onward chain. The property has a bright and spacious open-plan kitchen/living room with access to a private garden, a double bedroom, and a modern bathroom. An ideal first-time purchase.

Ideally located less than half a mile from West Ealing Elizabeth Line station, offering fast connections to Central London and Canary Wharf in around 30 minutes. A variety of local shops and amenities are nearby, with Ealing Broadway Shopping Centre also within easy reach.

Features

- One Bedroom
- Ground Floor
- Private Garden
- No Onward Chain
- Own Entrance
- Share Of Freehold

Denbigh Road, London, W13



Total area (approx.): 43.6 sq. m (469.3 sq. ft)