



NIGHTINGALE ROAD, WILLESDEN JUNCTION

LONDON, NW10 4SA

PRICE £1,250,000

Alerting all potential buy-to-let landlords and/or buyers seeking a home with income, this fabulous extended and loft converted 1811 sq.ft (168 sq.m) approx Victorian style terraced property has been converted into two self-contained (1 x 2 bedroom and 1 x 3 bedroom - two with en-suite shower/wc's) flats, has a 38ft rear garden + courtyard/outside space and is offered in 'turn-key' condition with no upper chain. The property has modern kitchens, contemporary style bathrooms, laminate flooring, double glazed windows and is situated very close to Willesden Junction (Zone 2 - Lioness, Mildmay & Bakerloo Line) station and Harrow Road bus routes into Central London. Tenure is Freehold and Council Tax bands are 'D' for each flat (London Borough of Brent).

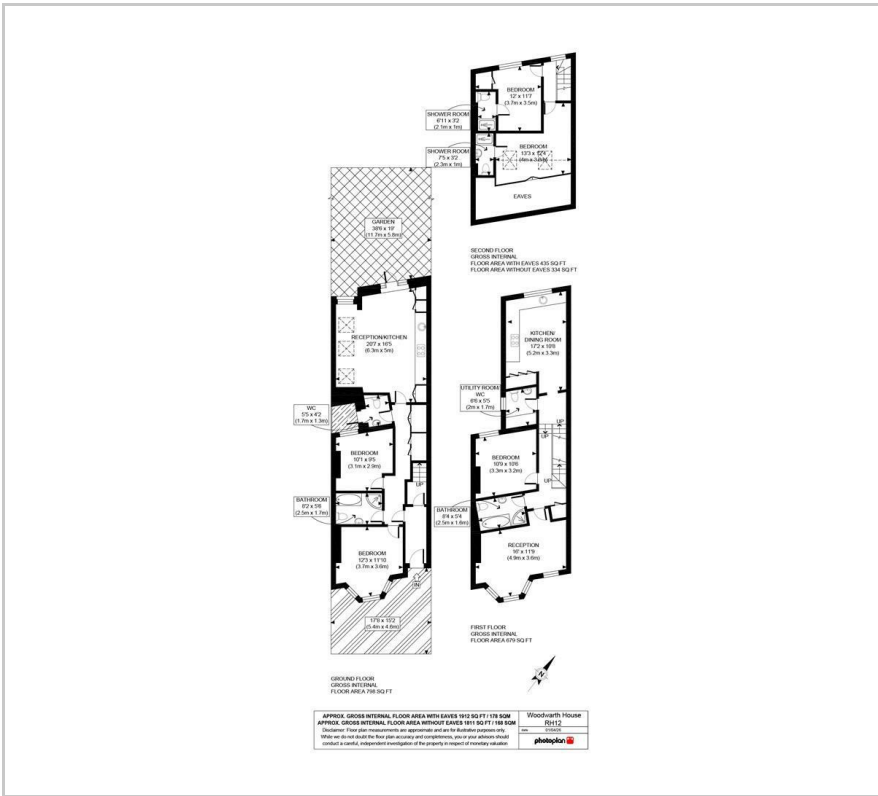
- FANTASTIC 1811 sq.ft (168 sq.m) TERRACED PROPERTY CONVERTED INTO TWO FLATS
- (1 x 2 BEDROOM & 1 x 3 BEDROOM - TWO WITH EN-SUITE SHOWER/WC'S)
- MODERN KITCHENS & BATHROOMS
- 38ft REAR GARDEN + COURTYARD/OUTSIDE SPACE
- 'TURN-KEY' CONDITION
- REAR EXTENDED & LOFT CONVERTED
- NO UPPER CHAIN
- VERY CLOSE TO WILLESDEN JUNCTION STATION

VIEWING

Please contact our Wenlock & Taylor Office on 020 8969 0122 if you wish to arrange a viewing appointment for this property or require further information



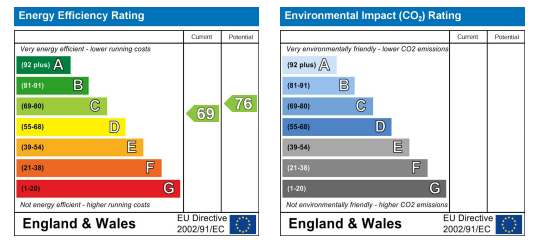
FLOOR PLAN



AREA MAP



ENERGY EFFICIENCY GRAPH



These particulars, whilst believed to be accurate are set out as a general outline only for guidance and do not constitute any part of an offer or contract. Intending purchasers should not rely on them as statements of representation of fact, but must satisfy themselves by inspection or otherwise as to their accuracy. No person in this firm's employment has the authority to make or give any representation or warranty in respect of the property.