

oakheart

£300,000

Asking Price

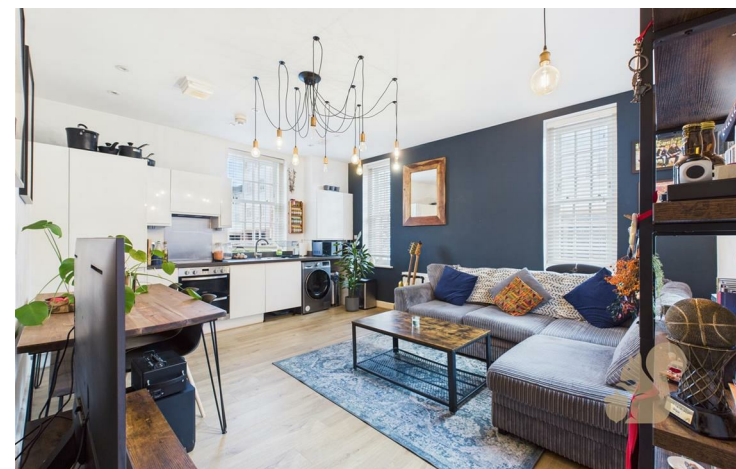
Grace Bartlett Gardens, Chelmsford



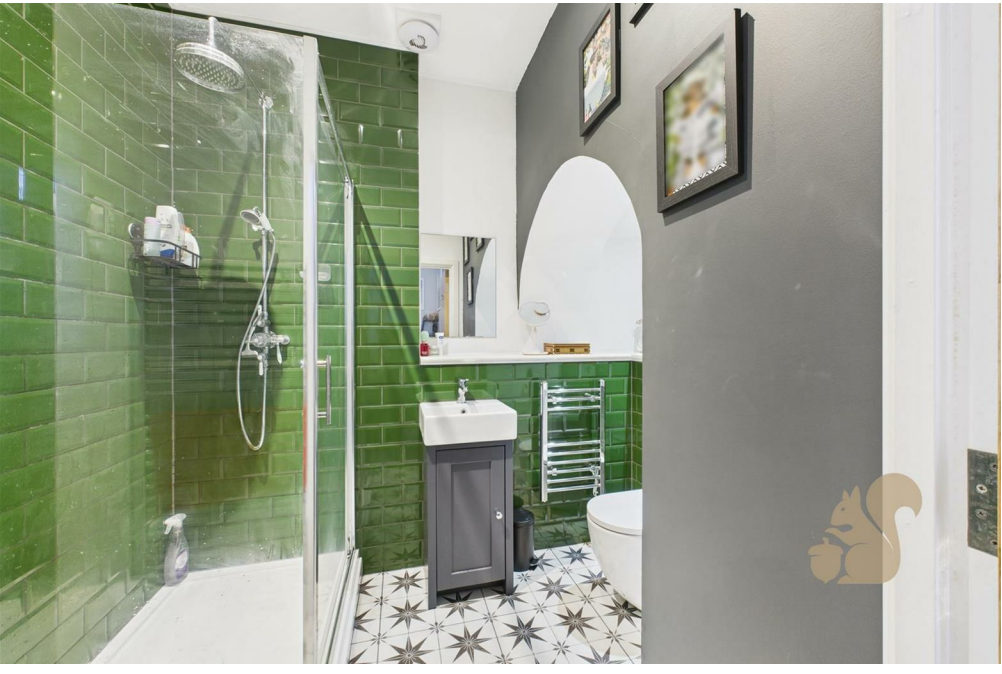
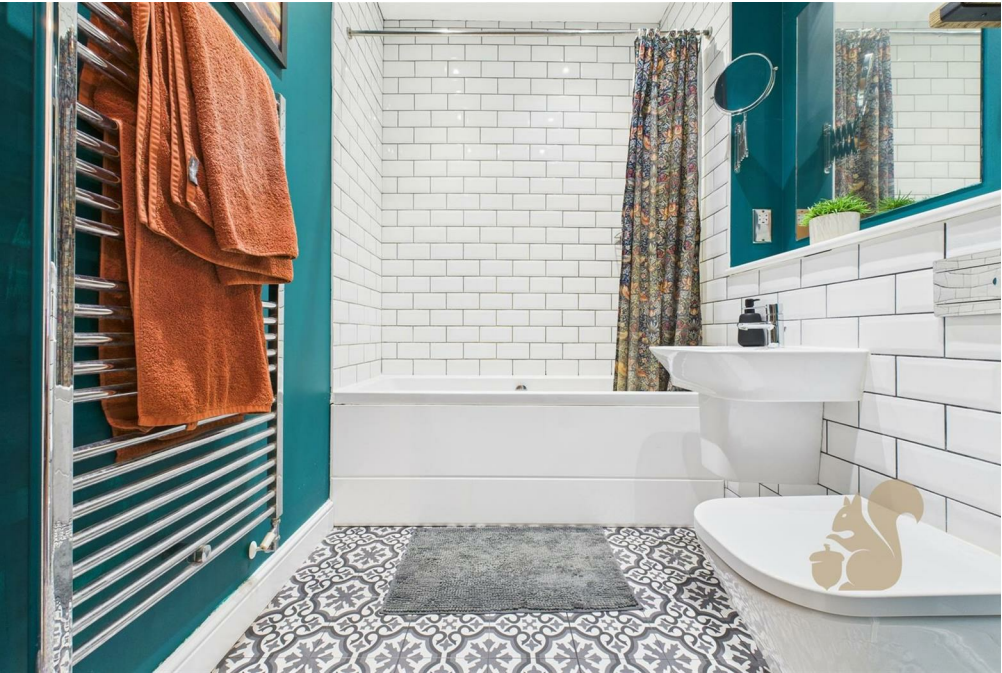
Situated on the old hospital site this is a immaculate, ground floor, two-bedroom apartment is located on the South of Chelmsford, on the edge of Moulsham and provides convenient access into London as well as the City Centre. The property itself has been well maintained by the current owners, offers plenty of natural light via the large sash windows and feels spacious given the high ceilings throughout.

Internally there are two double bedrooms, with the master having an en suite. It boasts a good-sized open plan lounge / kitchen which is fully fitted, a further bedroom along with an impressive four piece family bathroom. Externally there is one allocated parking space.

Please call Oakheart to arrange an internal viewing.









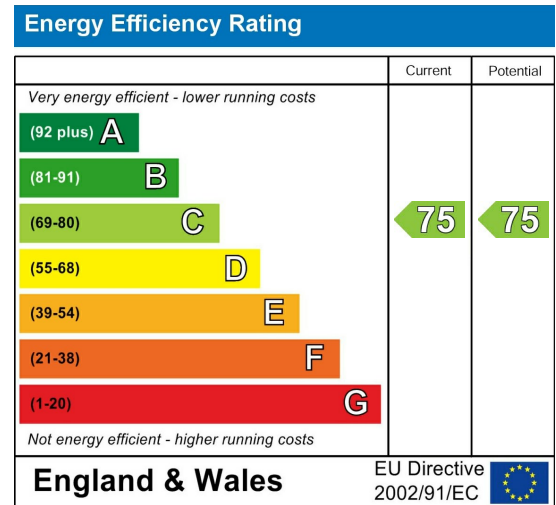


oakheart

Local Authority:

Tenure:
Leasehold

Council Tax Band:
C



Agents Note: Whilst every care has been taken to prepare these particulars, they are for guidance purposes only. All measurements are approximate and are for general guidance purposes only and whilst every care has been taken to ensure their accuracy, they should not be relied upon.