

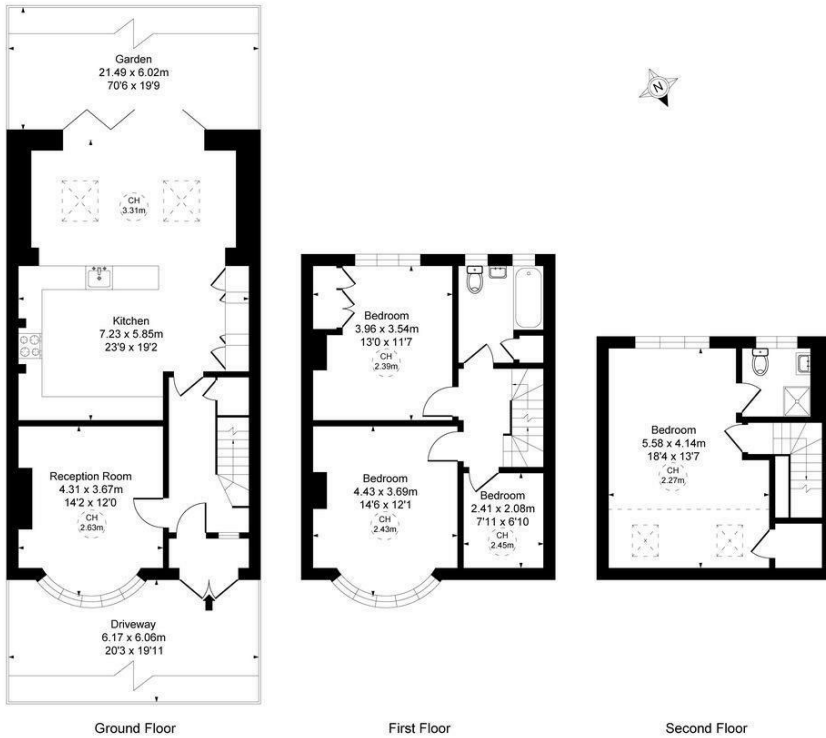
Arthur Road Motspur Park, KT3 6LX

£900,000 Freehold



This lovely 1,506 sqft FOUR BEDROOM, TWO BATHROOM fully extended 1930's house has an impressive 70'ft South West facing garden with rear access, off-street parking and a beautiful, extended open plan kitchen/dining room. Located on a desirable side road only 0.1 Miles to Motspur Park Station and the open space of The Sir Joseph Hood Memorial Playing Fields. There is also a spacious separate front reception, family bathroom and a good sized principal bedroom with a recently fitted en suite shower room.

Arthur Road Motspur Park, KT3
 Approximate Gross Internal Area
138.36 sq m / 1506 sq ft
 (Excluding restricted height
 under 1.5m / 50.29 sq m / 1402 ft)
 (CH = Ceiling Heights)



This plan is not to scale. It is for guidance and not for valuation purposes.
 All measurements and areas are approximate only, and have been prepared in accordance with the current edition of the RICS Code of Measuring Practice.



- Four Bedroom - Two Bathroom - 1,506 sqft
- 1930's Mid-Terrace House
- 0.1 Miles To Motspur Park Station And Shops
- Impressive 70'ft South West Facing Garden
- Gorgeous Extended Kitchen/Dining Room With Bifold Doors
- Extended Principal Bedroom With En Suite Shower Room
- Off-Street Parking To Front
- Desirable Residential Road
- EPC - C
- Council Tax Band - E

Energy Efficiency Rating		
	Current	Potential
Very energy efficient - lower running costs		
(92 plus) A		
(81-91) B		
(69-80) C		
(55-68) D		
(39-54) E		
(21-38) F		
(1-20) G		
Not energy efficient - higher running costs		
England & Wales		
EU Directive 2002/91/EC		

For Free Mortgage Quote and Best Mortgage Rates, call Ellisons Mortgage Advisor on 0208 944 9595



Although these particulars are believed to be correct, their accuracy is not guaranteed and they do not form part of any contract.

**Celebrating 30 years
 of successful Sales and
 Lettings in Merton**

