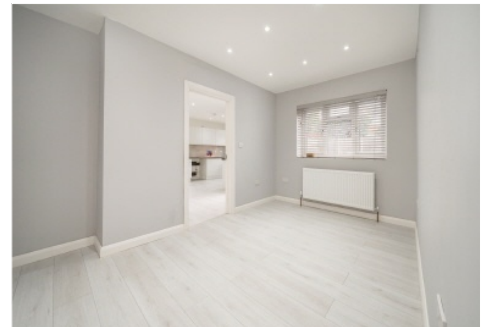


# Colin Dean Residential

in partnership with Dexters



## Bromefield, HA7

£4,250 pcm

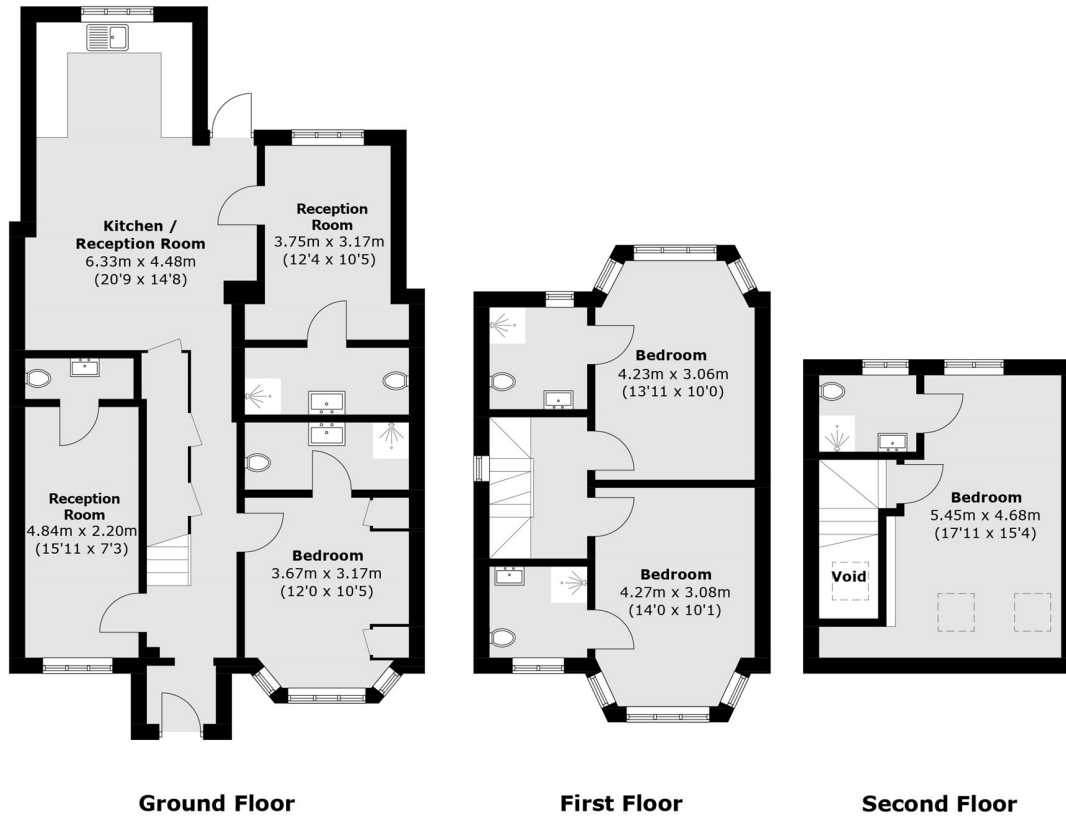
This beautifully renovated four-bedroom, five-bathroom home blends contemporary design with spacious, modern living - ideal for families or professional sharers. Each bedroom benefits from its own private en-suite, ensuring comfort, convenience and privacy for all residents. At the heart of the home is a sleek open-plan kitchen, complete with modern integrated appliances and ample space for dining and entertaining. Energy Rating: C.

The property is situated in within close proximity to local shops, bus stops and popular schools nearby. Canons Park station (Jubilee line) is approximately 0.7 Miles away, providing easy access to Central London and beyond.

- Newly Renovated • Four Double Bedrooms • Four En-Suite Bathrooms •
- Modern Kitchen • Off-Street Parking • Private Garden •

# Colin Dean Residential

in partnership with Dexters



Total area (approx.): 146.6 sq. m (1578.0 sq. ft)  
(Including Void)

Colin Dean Residential  
350 Pinner Road,  
Harrow, HA1 4LB  
020 8515 7929  
daniel.murray@colindean.com

Energy Rating: C We aim to make our particulars both accurate and reliable. However they are not guaranteed; nor do they form part of an offer or contract. If you require clarification on any points then please contact us, especially if you're travelling some distance to view. Please note that appliances and heating systems have not been tested and therefore no warranties can be given as to their good working order.