



Springfield Road, Sale

Offers Over £165,000



**HIBBERT
HOMES**

SALES & LETTINGS

Springfield Road

Sale

This charming ground floor apartment is new to the market and comes well-presented throughout, with good room proportions and a great, modern finish.

Situated in a fantastic location right in the heart of Sale Town Centre, the property enjoys unrivalled access to everything Sale has to offer, with its superb local shops, bars and restaurants, open-spaces and excellent transport links - there are ample bus routes and Sale Metrolink station is just a short walk away.

The property itself is deceptively spacious and offers great accommodation for singles or couples. With a bright living dining room and separate kitchen, there is ample space with a homely feel. The kitchen and shower rooms are modern, with contemporary fittings and fixtures. The property also comes with ample storage, with a good internal cupboard, and two further locked cupboards outside the apartment.

The development has a charming approach, with front gardens laid mainly to lawn with a variety of shrubs and flowers. To the rear is a well-maintained communal garden laid to lawn.





Springfield Road

Sale

- NO ONWARDS CHAIN
- Bright, ground floor apartment
- Perfect for first time buyers, buy to let or downsizers
- Great position at the heart of Sale Town Centre
- Generous double bedroom
- Living dining room with separate kitchen
- Short walk to local shops and cafés
- Great transport links via bus, Metrolink and road

Council Tax band: B

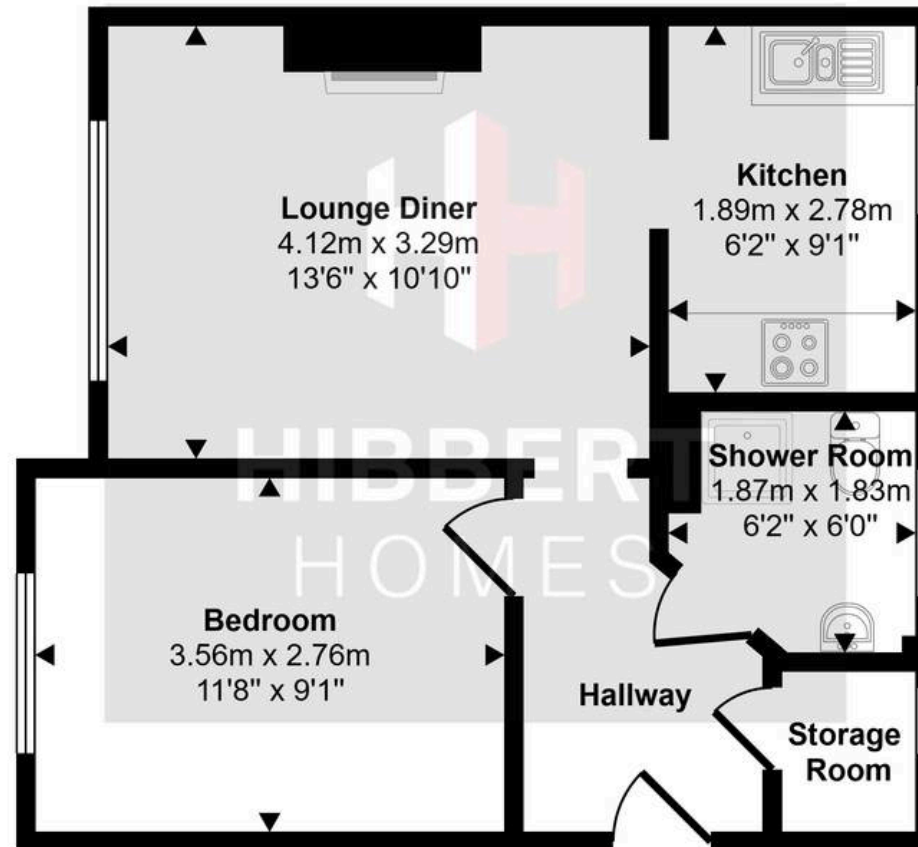
Tenure: Leasehold

EPC Energy Efficiency Rating: C

EPC Environmental Impact Rating:



Approx Gross Internal Area
40 sq m / 426 sq ft



Floorplan

This floorplan is only for illustrative purposes and is not to scale. Measurements of rooms, doors, windows, and any items are approximate and no responsibility is taken for any error, omission or mis-statement. Icons of items such as bathroom suites are representations only and may not look like the real items. Made with Made Snappy 360.

