



Heatherdene House

Park Estate



Heatherdene House, Park Estate, St Brelade, JE3 8EQ

Situated in the prestigious Park Estate in St. Brelade, this exceptional 4/5 bedroom family home boasts an immaculate presentation throughout, having been meticulously refurbished by the current owners to an exceptionally high standard. Situated in the desirable west of the island, the property offers a prime location with excellent amenities, top tier schools, and convenient bus routes, all within close proximity. Additionally, the stunning beaches of St. Brelade are just a short distance away, providing the perfect coastal escape.

The ground floor of the home features a large, open plan kitchen and dining area, seamlessly connected to the living room, both of which have doors leading out to the beautifully landscaped garden. This thoughtful design allows for a perfect blend of indoor and outdoor living, ideal for entertaining or family gatherings. A separate second sitting room/snug area provides a cozy retreat for relaxation, while the dedicated study offers a quiet space for work or personal projects. Practicality is further enhanced by a well-appointed laundry room.

Upstairs, the property boasts 4/5 generously sized bedrooms, 4 of which include en suite bathrooms, ensuring comfort and privacy for family members and guests alike. Each room is designed with attention to detail and high-quality finishes, reflecting the overall standard of the refurbishment including brand new aluminium windows throughout.

The exterior of the home is equally impressive, featuring an immaculately presented lawned garden bordered by mature shrubs. A newly installed heated swimming pool with paved areas around it adds a touch of luxury and provides a perfect spot for relaxation and recreation. The property also benefits from a double garage and additional parking space for up to six cars, catering to the needs of a busy family lifestyle.



5



4



4

Parish: St Brelade

Qualification: Qualified

Tenure: Freehold

Price £2,495,000



- Stunning family home
- 4/5 Bedrooms and 4 reception rooms
- Renovated throughout
- Excellent location close to amenities
- Heated swimming pool
- Double garage and ample parking























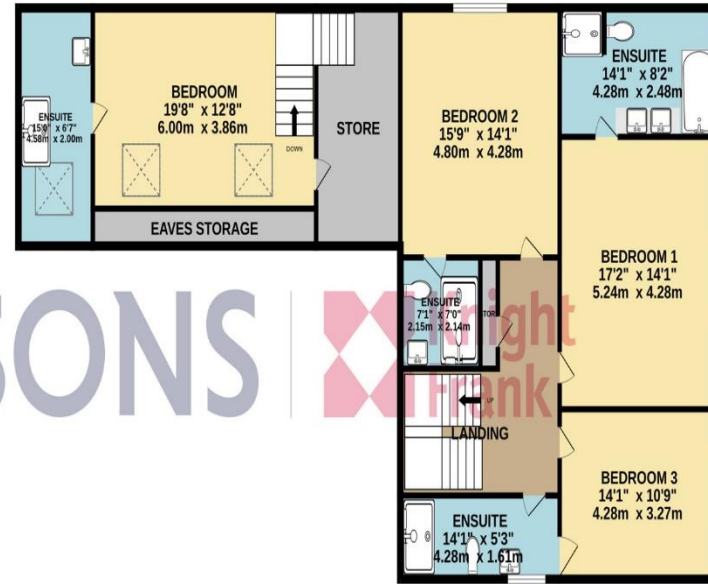
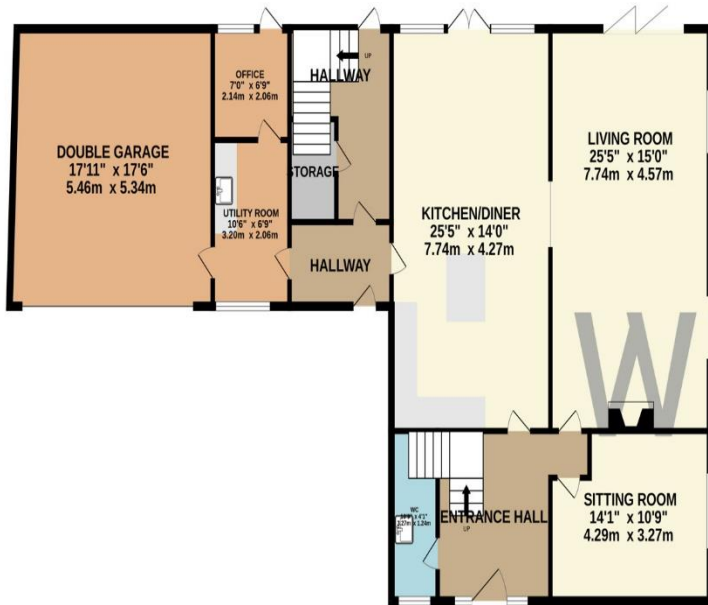




GROUND FLOOR
1596 sq.ft. (148.3 sq.m.) approx.

1ST FLOOR
1517 sq.ft. (140.9 sq.m.) approx.

2ND FLOOR
436 sq.ft. (40.5 sq.m.) approx.



TOTAL FLOOR AREA : 3549 sq.ft. (329.8 sq.m.) approx.

Whilst every attempt has been made to ensure the accuracy of the floorplan contained here, measurements of doors, windows, rooms and any other items are approximate and no responsibility is taken for any error, omission or mis-statement. This plan is for illustrative purposes only and should be used as such by any prospective purchaser. The services, systems and appliances shown have not been tested and no guarantee as to their operability or efficiency can be given.

Made with Metropix ©2024

This plan is for layout guidance only. Not drawn to scale unless stated. Windows and door openings are approximate. Whilst every care is taken in the preparation of this plan, please check all dimensions, shapes and compass bearings before making any decisions reliant upon them.

Services

All main

No gas

Oil fired central heating

+441534 877977

Knight Frank Jersey

37-39 Halkett Place St Helier, Jersey JE2 4WG

knightfrank.je

Your partners in property

1. Particulars: These particulars are not an offer or contract, nor part of one. You should not rely on statements given by Knight Frank Jersey in the particulars, by word of mouth or in writing (“information”) as being factually accurate about the property, its condition or its value. Neither Knight Frank Jersey nor any joint agent has any authority to make any representations about the property, and accordingly any information given is entirely without responsibility on the part of Knight Frank Jersey. 2. Material Information: Please note that the material information is provided to Knight Frank Jersey by third parties and is provided here as a guide only. While Knight Frank Jersey has taken steps to verify this information, we advise you to confirm the details of any such material information prior to any offer being submitted. If we are informed of changes to this information by the seller or another third party, we will use reasonable endeavours to update this as soon as practical. 3. Photos, Videos etc: The photographs, property videos and virtual viewings etc. show only certain parts of the property as they appeared at the time they were taken. Areas, measurements and distances given are approximate only. 4. Regulations etc: Any reference to alterations to, or use of, any part of the property does not mean that any necessary planning, building regulations or other consent has been obtained. A buyer must find out by inspection or in other ways that these matters have been properly dealt with and that all information is correct. 5. Fixtures and fittings: A list of the fitted carpets, curtains, light fittings and other items fixed to the property which are included in the sale (or may be available by separate negotiation) will be provided by the Seller’s Lawyer. Particulars dated 03/06/2026. All information is correct at the time of going to print.

