



Price
£330,000

Freehold

3x  1x  1x 

**Tall Trees Close,
Kingswood, Maidstone,
Kent, ME17**

Wards
Helping you move forwards



Main features

- Quiet cul-de-sac location located in Kingswood offering countryside charm with the convenience of shops, school and connections to the M20 and local villages
- Garage and driveway
- Offered chain free
- Cosy lounge, separate kitchen and large conservatory

Accommodation

GROUND FLOOR

Entrance Hall

Kitchen/Diner: 15'7 x 11'2 (4.75m x 3.41m)

Conservatory: 10'5 x 8'1 (3.18m x 2.47m)

Lounge: 14'3 x 11'10 (4.35m x 3.61m)

FIRST FLOOR

Landing

Bedroom 1: 10'5 x 10'2 (3.18m x 3.10m)

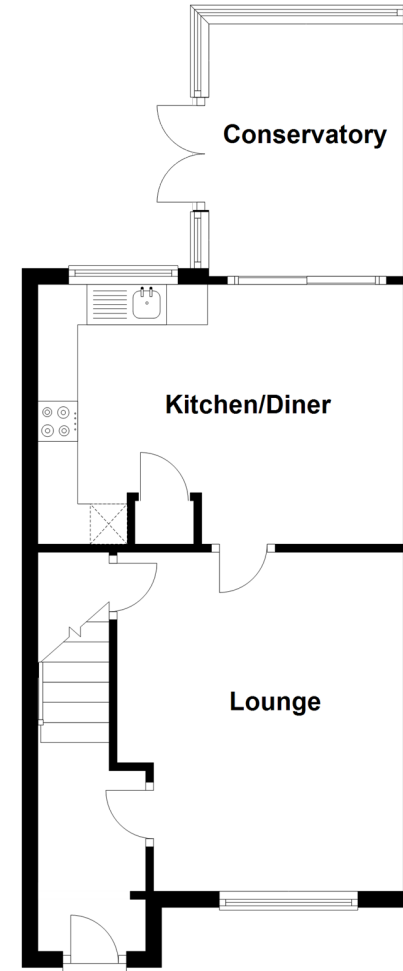
Bathroom

Bedroom 2: 12'9 x 8'5 (3.89m x 2.57m)

Bedroom 3: 9'2 x 8'0 (2.80m x 2.44m)

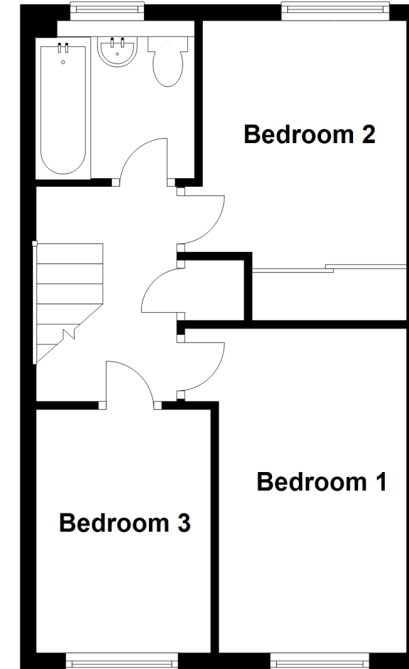
Ground Floor

Approx. 43.6 sq. metres (469.0 sq. feet)



First Floor

Approx. 36.7 sq. metres (394.7 sq. feet)



Call Headcorn - 01622 890435 ■ wardsof Kent.co.uk

- Legal advice should be taken to verify fixtures/fittings, planning, alterations and/or lease details
- Appliances & services are untested, dimensions are approximate and floor plans are not to scale



12722301/20251216/HS1/HS1