



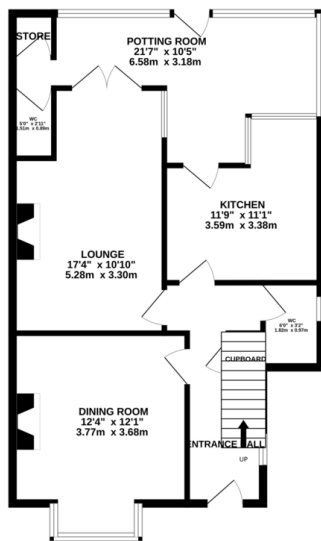
FOR SALE

3 Bed Semi-Detached House in Leicester Road, Wigston
£280,000

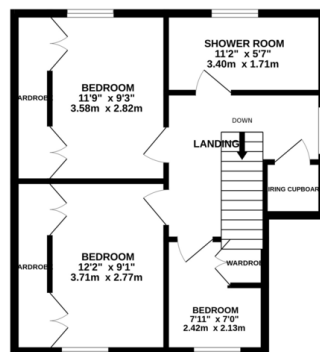
*** No Chain *** This property has real charm. There are a wealth of features through the property, a beautiful large garden and heaps of potential, it's a real star property. The accommodation comprises entrance hall, dining room, lounge, kitchen, downstairs w.c., potting room, outside loo, three bedrooms, shower room, detached garage/workshop, off road parking and larger than average rear garden. The property is also within a short walking distance of Wigston town centre.



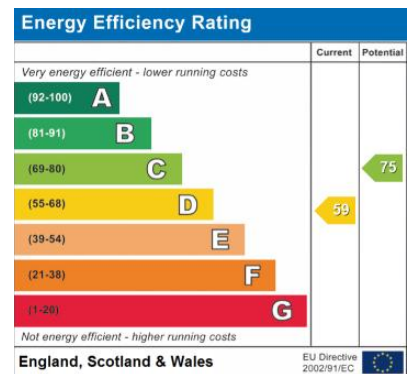
GROUND FLOOR
718 sq.ft. (66.7 sq.m.) approx.



1ST FLOOR
482 sq.ft. (44.8 sq.m.) approx.



TOTAL FLOOR AREA: 1200 sq.ft. (111.5 sq.m.) approx.
Whilst every attempt has been made to ensure the accuracy of the floorplans contained herein, measurements of doors, windows, rooms and any other areas are approximate and no responsibility is taken for any error, omission or mis-statement. This plan is for illustrative purposes only and should be used as such by any prospective purchaser. The services, systems and appliances shown have not been tested and no guarantee as to their operability or efficiency can be given.
Made with Metreplan 62002



- No Chain
- Huge Potential
- Large Rear Garden
- Three Bedrooms
- Slightly Extended
- Great Features
- Workshop/Garage
- Downstairs W.C.

Agents Note: Whilst every care has been taken to prepare these sales particulars, they are for guidance purposes only. All measurements are approximate are for general guidance purposes only and whilst every care has been taken to ensure their accuracy, they should not be relied upon and potential buyers are advised to recheck the measurements.

