



LIVERPOOL ROAD

Islington N7



A CHARACTERFUL, GEORGIAN TERRACED HOUSE.

An elegant and thoughtfully arranged period home offering nearly 2000 sq ft of versatile accommodation. This charming property combines generous proportions with refined interior detailing, creating a wonderfully balanced family home in the heart of Islington.



4



2



2

EPC

D

Local Authority: London Borough of Islington

Council Tax band: G

Tenure: Freehold

Guide price: £2,400,000



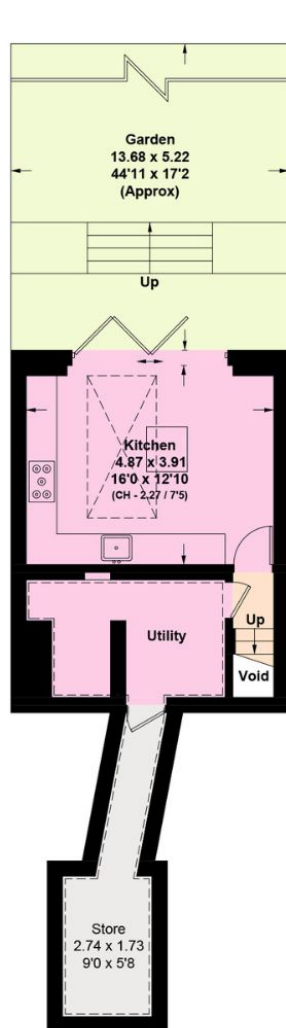
The lower ground floor features a spacious kitchen and dining area with direct access to the garden. A separate utility area and a useful store room offer excellent ancillary space. The ground floor is arranged as a pair of well-proportioned reception rooms, each with impressive ceiling heights and large windows that enhance the sense of light and scale. Doors separate these two rooms and that can open to create a double aspect, reception space. There is a modern bathroom located on this floor too.

The first floor comprises a further generous reception room alongside a double bedroom, both enjoying attractive outlooks and superb natural light. The reception room can double up as a bedroom depending on the requirements for potential purchasers. On the second floor are two additional bedrooms, including a particularly sizeable principal bedroom, as well as a family bathroom and an additional store room.

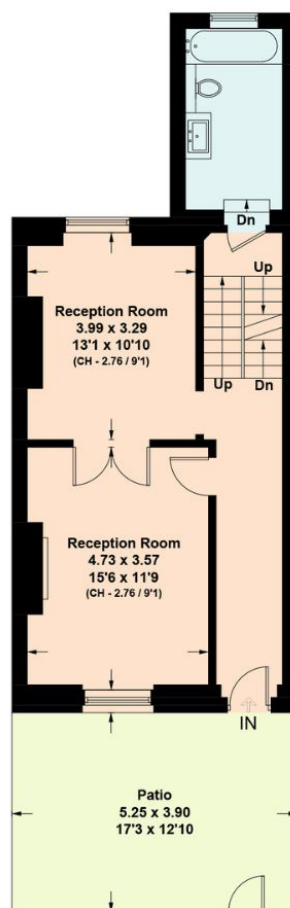






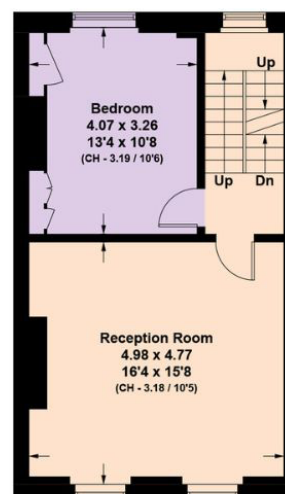


Lower Ground Floor

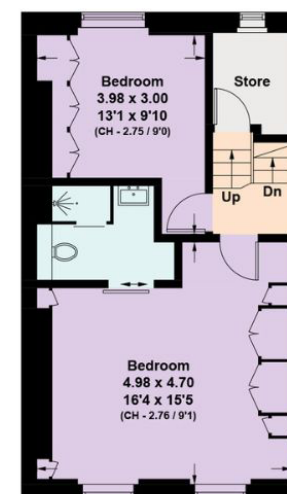


Ground Floor

= Reduced head height below 1.5m



First Floor



Second Floor

(Including Limited Use Area)
Approximate Gross Internal Area = 196.7 sq m / 2,117 sq ft

This plan is for layout guidance only. Not drawn to scale unless stated. Windows and door openings are approximate. Whilst every care is taken in the preparation of this plan, please check all dimensions, shapes and compass bearings before making any decisions reliant upon them. (ID767266)



We would be delighted
to tell you more.

Sebastian Toy
+44 203 657 7348
sebastian.toy@knightfrank.com

Knight Frank Islington
321-322 Upper Street
London N1 2XQ

knightfrank.co.uk

Your partners in property

1. Particulars: These particulars are not an offer or contract, nor part of one. You should not rely on statements given by Knight Frank in the particulars, by word of mouth or in writing ("information") as being factually accurate about the property, its condition or its value. Neither Knight Frank nor any joint agent has any authority to make any representations about the property, and accordingly any information given is entirely without responsibility on the part of Knight Frank. 2. Material Information: Please note that the material information is provided to Knight Frank by third parties and is provided here as a guide only. While Knight Frank has taken steps to verify this information, we advise you to confirm the details of any such material information prior to any offer being submitted. If we are informed of changes to this information by the seller or another third party, we will use reasonable endeavours to update this as soon as practical. 3. Photos, Videos etc: The photographs, property videos and virtual viewings etc. show only certain parts of the property as they appeared at the time they were taken. Areas, measurements and distances given are approximate only. 4. Regulations etc: Any reference to alterations to, or use of, any part of the property does not mean that any necessary planning, building regulations or other consent has been obtained. A buyer must find out by inspection or in other ways that these matters have been properly dealt with and that all information is correct. 5. Fixtures and fittings: A list of the fitted carpets, curtains, light fittings and other items fixed to the property which are included in the sale (or may be available by separate negotiation) will be provided by the Seller's Solicitors. 6. VAT: The VAT position relating to the property may change without notice. 7. To find out how we process Personal Data, please refer to our Group Privacy Statement and other notices at <https://www.knightfrank.com/legals/privacy-statement>.

Particulars dated December 2025. Photographs and videos dated December 2025. All information is correct at the time of going to print. Knight Frank is the trading name of Knight Frank LLP. Knight Frank LLP is a limited liability partnership registered in England and Wales with registered number OC305934. Our registered office is at 55 Baker Street, London W1U 8AN. We use the term 'partner' to refer to a member of Knight Frank LLP, or an employee or consultant. A list of members names of Knight Frank LLP may be inspected at our registered office. If you do not want us to contact you further about our services then please contact us by either calling 020 3544 0692, email to marketing.help@knightfrank.com or post to our UK Residential Marketing Manager at our registered office (above) providing your name and address.