



Keith
Ashton

Mill Lane, Hook End
Brentwood



MATHERN MILL LANE

Hook End Brentwood, CM15 0NZ

Guide Price £575,000

With a pleasant outlook over open fields to the front elevation, we are delighted to bring to market this attractive and beautifully maintained, semi-detached family home in the popular village of Hook End. Benefitting from three DOUBLE bedrooms, a spacious family bathroom which includes a large walk-in shower AND a freestanding, slipper bath, a ground floor cloakroom, a bright and spacious lounge/diner giving access into a landscaped rear garden and a stylish kitchen with appliances. There is plenty of parking available on your own private driveway, plus an integral garage. The property is perfectly located, being within walking distance of Doddinghurst Village and just a short drive into Brentwood and Shenfield Town Centres, where you will find high street shopping and mainline train services into London. Interested parties will be keen to know that the onward chain is complete.

THREE DOUBLE BEDROOMS
SPACIOUS LOUNGE / DINER

WELL-MAINTAINED FAMILY HOME
LANDSCAPED REAR GARDEN

LARGE BATHROOM WITH BATH & SHOWER
EXCELLENT PARKING INC. INTEGRAL
GARAGE

GROUND FLOOR CLOAKROOM
OVERLOOKING FIELDS TO THE FRONT
ASPECT



Description

Stepping into the hallway there are oak doors to all rooms and stairs rising to the first floor with oak handrail and glass balustrade. A bright and spacious lounge/diner is a lovely room with contemporary, inset log burner and bi-folding doors which open directly onto the patio area. The lounge is open plan to a stylish kitchen, fitted with modern gloss wall and base units in contrasting colours. Integrated appliances include a double oven, hob with extractor above and a fridge/freezer and there is ample space for further appliances. Finishing the accommodation on the ground floor is a modern cloakroom with w.c. and wash hand basin.

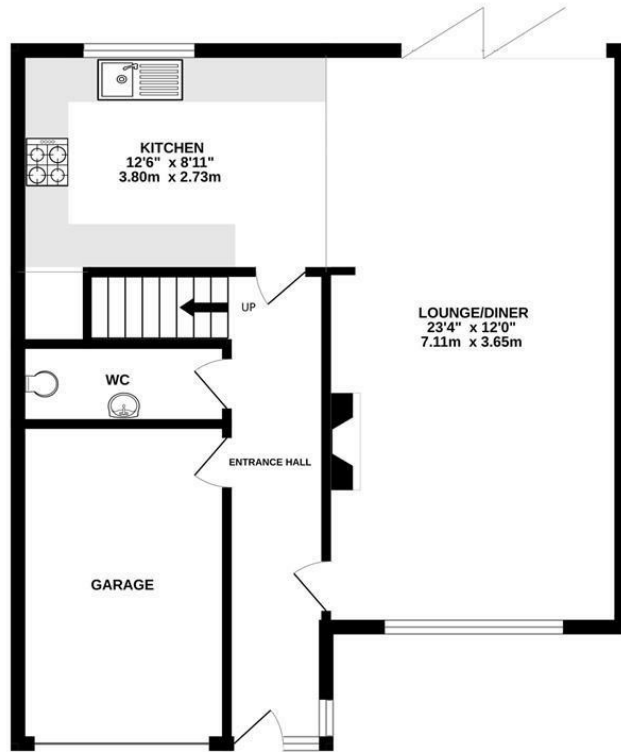
Stairs rise to the first-floor landing, where there is an air conditioning unit and oak doors to all rooms. There are three bedrooms, all well-proportioned and of DOUBLE size. Two of the bedrooms have built-in cupboards, and all three rooms have space for additional fitted or freestanding bedroom furniture. There is a sizeable family bathroom, beautifully styled and including a free standing, slipper bath with central up and over mixer taps, a large walk-in shower, wash hand basin and a w.c. with hidden cistern.

At the rear of the property there is a well-maintained, landscaped garden which measures in the region of 70' in length. Commencing with a raised paved patio which leads into a neat sleeper edged lawn, with a paved pathway leading to the bottom of the garden where you will find a good-sized timber storage shed. Side pedestrian access leads through to the front of the property where you have parking for several vehicles on your own driveway, in addition to an integral garage.

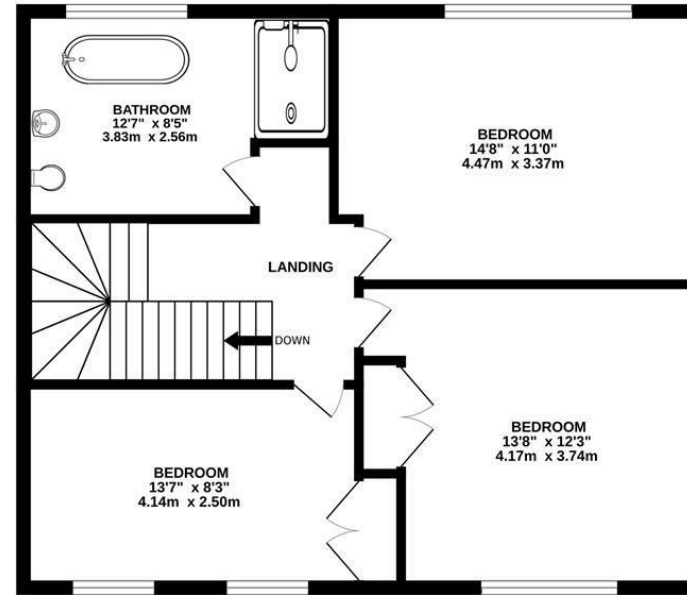




GROUND FLOOR
653 sq.ft. (60.7 sq.m.) approx.

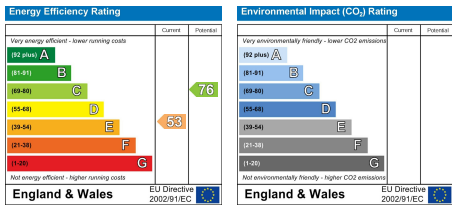


1ST FLOOR
636 sq.ft. (59.1 sq.m.) approx.



TOTAL FLOOR AREA : 1289 sq.ft. (119.8 sq.m.) approx.

Measurements are approximate. Not to scale. Illustrative purposes only
Made with Metropix ©2025



SERVICES:
Local Authority: Brentwood
Council tax band: E
Post Code: CM15 0NZ

VIEWING:
Strictly by prior arrangement with Keith Ashton Estate Agents

MORTGAGE INFORMATION: We offer the additional facility of an in-house Independent Financial Adviser who will access all mortgage lenders with the purpose of providing you with the benefit of choice. For quotations or comparables please call 01277 375757 or visit our interactive website at www.mortgagebusiness.net

We the Agent have not tested any apparatus, fittings or services for this property. The plot size is intended merely as a guide and has not been officially measured or verified by the Agent. Photographs are for illustration only and may depict items which are not for sale or included in the sale of the property. As part of the service we offer we may recommend ancillary services to you which we believe may help you with your property transaction. We wish to make you aware, that should you decide to use these services we will receive a referral fee. For full and detailed information please visit 'terms and conditions' on our website www.keithashton.co.uk

