



## Tolson Road

Isleworth, TW7

£550,000

Situated in the heart of Old Isleworth, on a prime residential road, this two double bedroom Victorian cottage is ideally located for access to a choice of excellent public transport links, a range of excellent local schools and the shops, cafes & bars of Old Isleworth. Offered to the market with no onward chain, the property has been fully refurbished throughout. The ground floor accommodation offers a bright and spacious reception room, modern fitted kitchen, utility and a luxury bathroom. The second floor offers a large principle bedroom and a second double bedroom with an en-suite shower room and access to the private roof terrace. Externally the property benefits from a private outside space and roof terrace. Further benefits include gas central heating, double glazing and access to loft space.

- No Forward Chain
- Fully Refurbished
- Two Double Bedrooms
- Roof Terrace
- Victorian Cottage
- Excellent Location



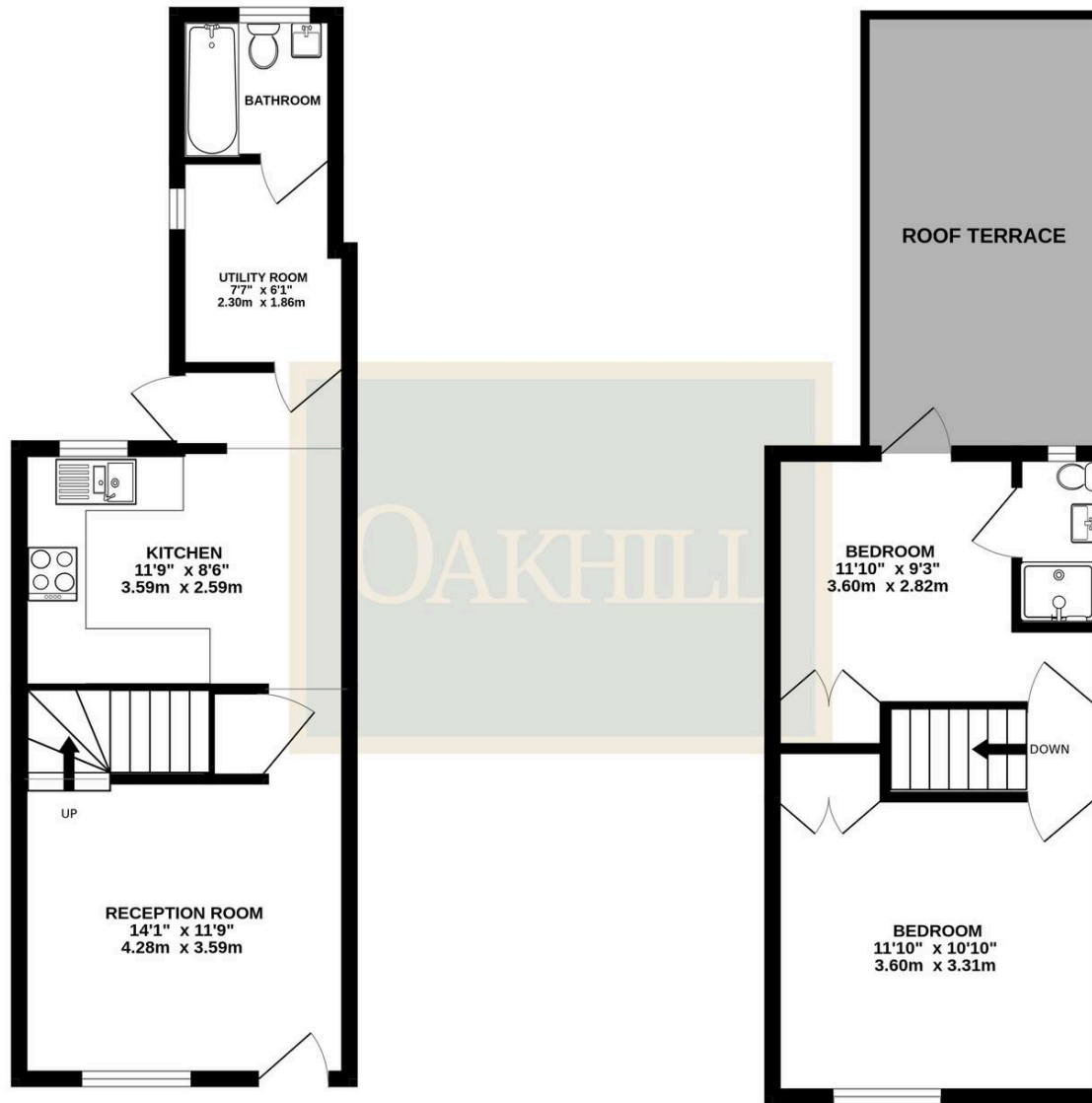
SCAN HERE  
FOR  
PROPERTY  
DETAILS



OAKHILL

GROUND FLOOR

1ST FLOOR



TOTAL FLOOR AREA : 667sq.ft. (62.0 sq.m.) approx.

Whilst every attempt has been made to ensure the accuracy of the floorplan contained here, measurements of doors, windows, rooms and any other items are approximate and no responsibility is taken for any error, omission or mis-statement. This plan is for illustrative purposes only and should be used as such by any prospective purchaser. The services, systems and appliances shown have not been tested and no guarantee as to their operability or efficiency can be given.  
Made with Metropix ©2026

