

Blandford Street, W1U

£2,340 Per calendar month

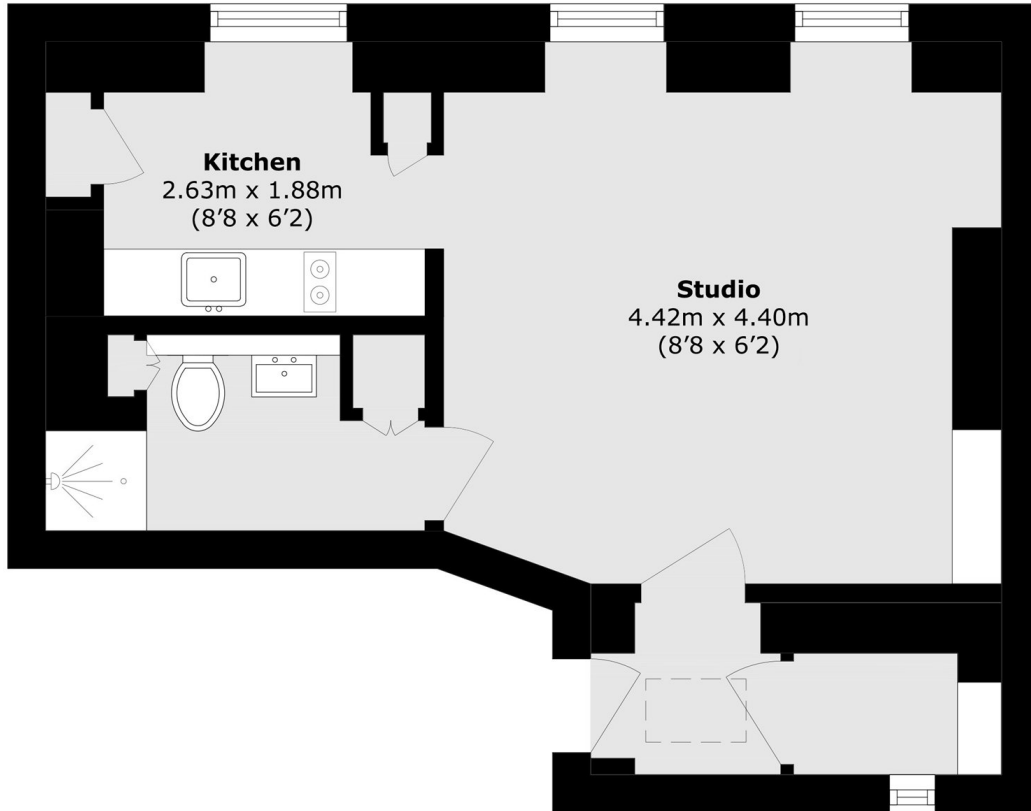
A spacious studio apartment on the first floor of a Georgian conversion. This apartment has wood flooring and a separate kitchen. *Please note that the furniture has been virtually staged*

Blandford street is located just off Marylebone High Street, surrounded by a variety of shops and cafes. Moments away from The Chiltern Firehouse.

Features

- First Floor
- High Ceilings
- Wood Flooring
- Separate Kitchen
- Unfurnished
- The Portman Estate

Blandford Street, London, W1U



Total area (approx.): 32.3 sq. m (347.6 sq. ft)