



Main Street, Ailsworth Peterborough
Offers in Excess of £400,000 **Freehold**

QUENTIN
MARKS



Key Features



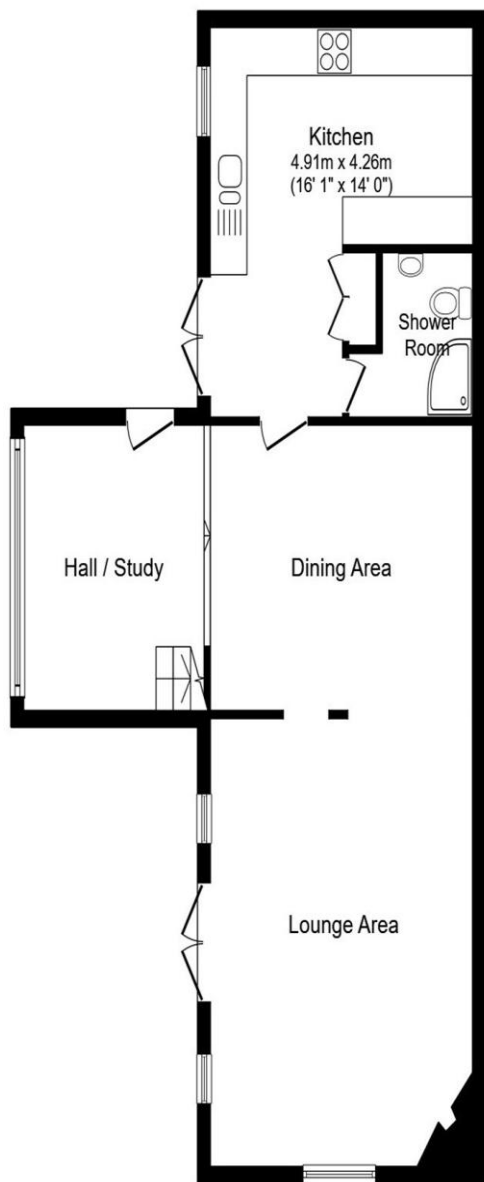
- Detached Barn Conversion
- 3 Bedrooms
- 9.5m Lounge / Diner
- Woodburner
- Study Hallway

This excellent natural stone barn conversion provides versatile accommodation suitable for all age groups. The property features a modern fitted kitchen equipped with built-in appliances, including a gas hob with a double oven beneath and an integrated fridge-freezer. There is space for a tumble dryer, along with plumbing for both a washing machine and dishwasher, and a useful shelved pantry cupboard.

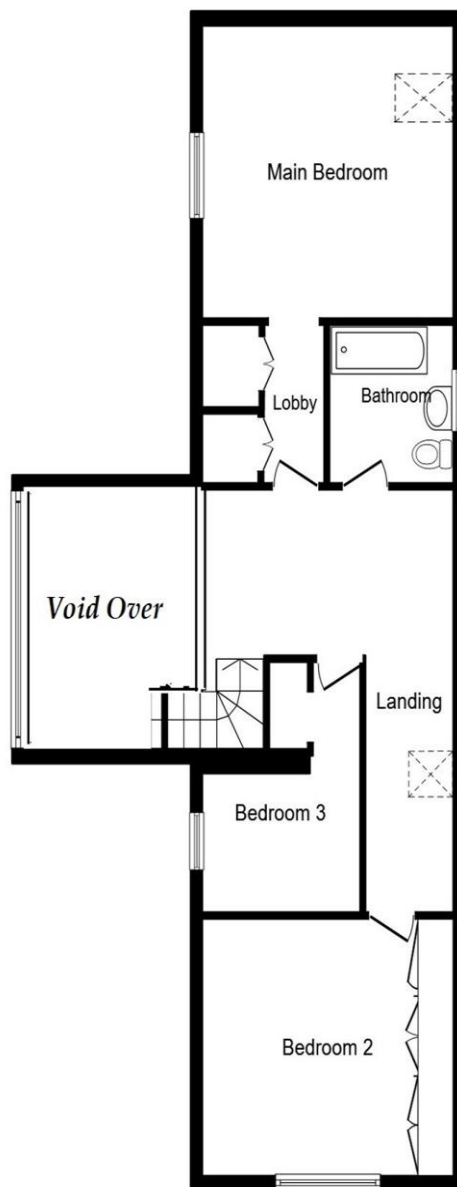
On the ground floor there is also a well-appointed shower room comprising a concealed-flush WC, a vanity wash basin with storage below, and a large shower cubicle. To the front of the property is a study/entrance hall featuring a striking floor to ceiling picture window and stairs rising to a galleried landing.

The impressive open-plan lounge/dining room extends to approximately 9.5 metres in length and provides two distinct areas: a generous dining space leading through to the sitting room, which features a wood-burner set within an attractive stone fireplace. French doors open to the front elevation, and original barn features have been thoughtfully retained, including characterful V-slit





Ground Floor



First Floor

windows.

Upstairs, there are three double bedrooms. The master bedroom is a good size and includes freestanding wardrobes. The second bedroom offers a combination of fitted and freestanding wardrobes, while the third bedroom, though smaller, can still accommodate a double bed if required and benefits from a built-in open-fronted cupboard. The family bathroom is well appointed with a three-piece suite and an independent shower over the bath.

The galleried landing is spacious enough to be used as a study area or children's play space, adding further flexibility to this charming home.

Outside, there is gated access to an extensive gravelled parking area. Fully enclosed by stone boundary walls and fencing, further garden area is laid to lawn. The property has the benefit of gas fired central heating.

- Hall / Study Area: 3.57m × 2.97m
- Kitchen: 4.91m (max) × 4.26m (max)
- Dining Area: 3.92m × 3.58m
- Lounge Area: 5.62m × 4.32m
- Bedroom 1: 4.37m × 4.01m
- Bedroom 2: 3.83m × 3.65m
- Bedroom 3: 2.70m × 2.07m

To view this property call Quentin Marks on:
01778 391600

Selling your property?

Contact us to arrange a **FREE** home valuation.

 01778 391600

 2 West Street, Bourne, Lincs, PE10 9NE

 sales@quentinmarks.co.uk

 www.quentinmarks.co.uk



SCAN FOR MORE
INFORMATION



Sharman Quinney Holdings Limited is registered in England and Wales under company number 4174227, Registered Office is Cumbria House, 16-20 Hockliffe Street, Leighton Buzzard, Bedfordshire, LU7 1GN. VAT Registration Number is 500 2481 05.

1: These particulars do not constitute part or all of an offer or contract. 2: The measurements indicated are supplied for guidance only and as such must be considered incorrect. 3: Potential buyers are advised to recheck the measurements before committing to any expense. 4: Sharman Quinney has not tested any apparatus, equipment, fixtures, fittings or services and it is the buyers interests to check the working condition of any appliances. 5: Sharman Quinney has not sought to verify the legal title of the property and buyers must obtain verification from their legal representative. 6: Intending purchasers will be asked to produce identification documentation at a later stage and we would ask your co-operation in order that there will be no delay in agreeing the sale. Ref: SQB100307 - 0006