





**Woodland Avenue
Hove, BN3 6BJ**

FERMERS




4 
 2 
 2 

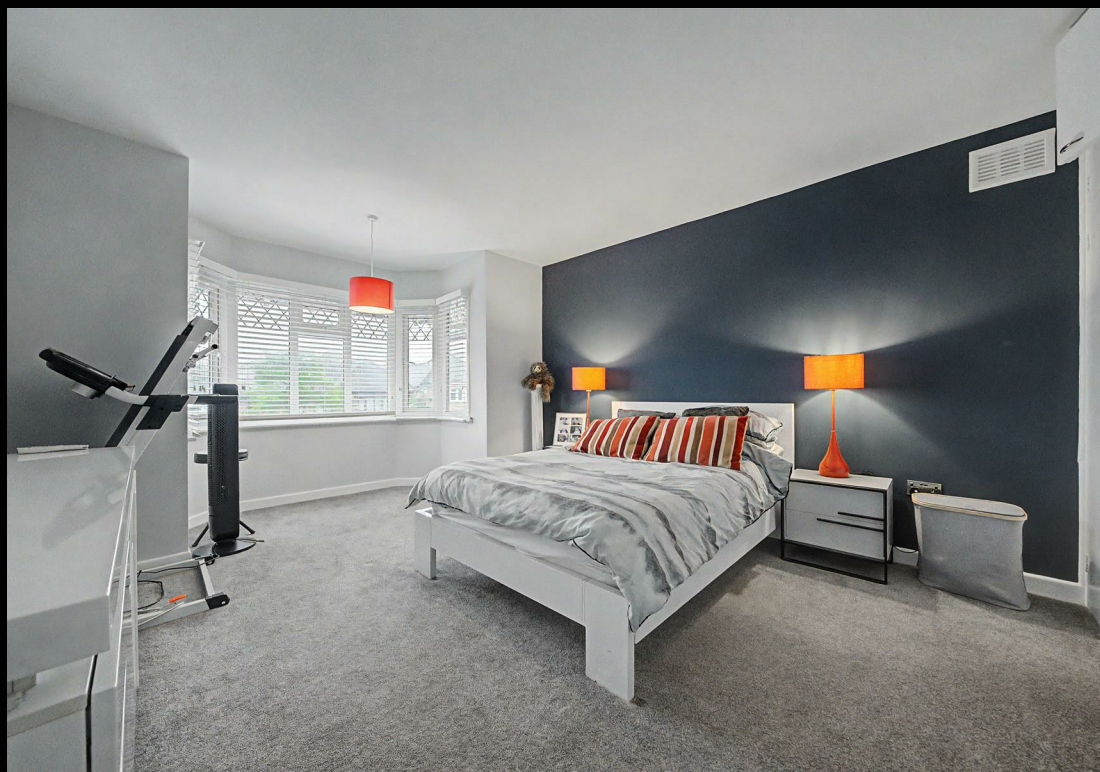
TENURE
Freehold

EPC RATING

COUNCIL TAX BAND
E

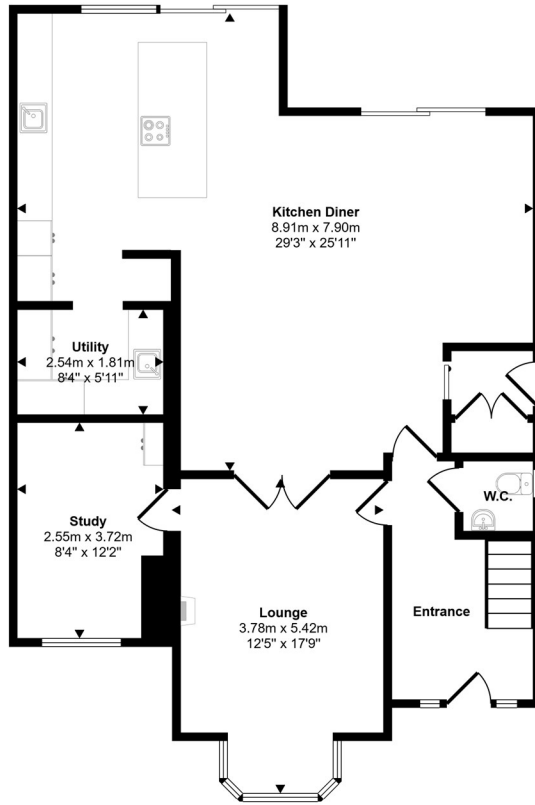


Energy Efficiency Rating		
	Current	Potential
Very energy efficient - lower running costs		
(92 plus) A		
(81-91) B		
(69-80) C		
(55-68) D		
(39-54) E		
(21-38) F		
(1-20) G		
Not energy efficient - higher running costs		
England & Wales		EU Directive 2002/91/EC 

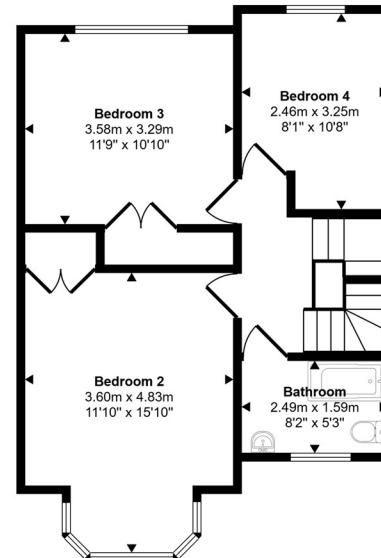


Woodland Avenue

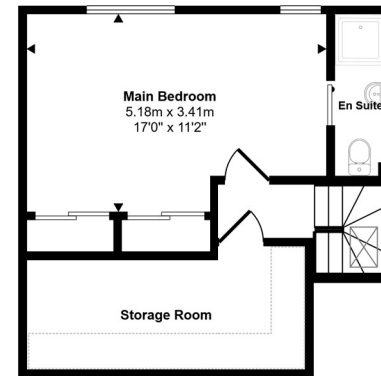
Approx Gross Internal Area
185 sq m / 1995 sq ft



Ground Floor
Approx 100 sq m / 1075 sq ft



First Floor
Approx 50 sq m / 536 sq ft



Second Floor
Approx 36 sq m / 383 sq ft

☐ Denotes head height below 1.5m

This floorplan is only for illustrative purposes and is not to scale. Measurements of rooms, doors, windows, and any items are approximate and no responsibility is taken for any error, omission or mis-statement. Icons of items such as bathroom suites are representations only and may not look like the real items. Made with Made Snappy 360.

FERMERS

OFFICE ADDRESS

67 Queen Victoria Avenue
Hove
East Sussex
BN3 6XA

OFFICE DETAILS

01273 541 177
sales@fermers.co.uk
www.Fermers.co.uk

Agents Note: Whilst every care has been taken to prepare these particulars, they are for guidance purposes only. All measurements are approximate and are for general guidance purposes only and whilst every care has been taken to ensure their accuracy, they should not be relied upon and potential buyers/tenants are advised to recheck the measurements