



## Bath Terrace, SE1

### £400,000

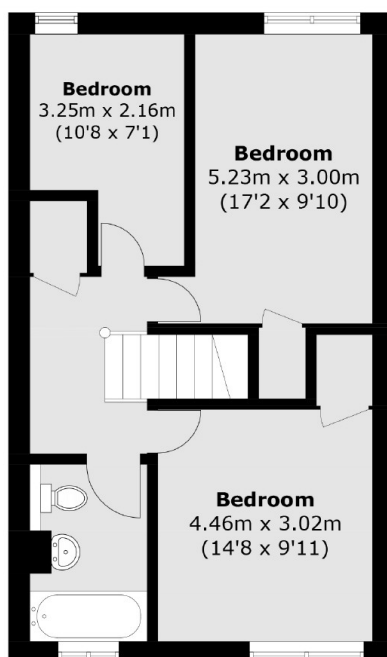
Situated on a quiet leafy street, this bright and airy split level three bedroom flat boasts a large living space, separate kitchen, private balcony, family bathroom, guest WC, ample storage and permit parking. Chain free sale. OIEO £425,000

Bath Terrace is just 0.2 miles from Elephant & Castle Station and 0.3 miles from Borough Station, providing excellent transport links across London. A wide range of shops, cafés, delis and restaurants are just moments away.

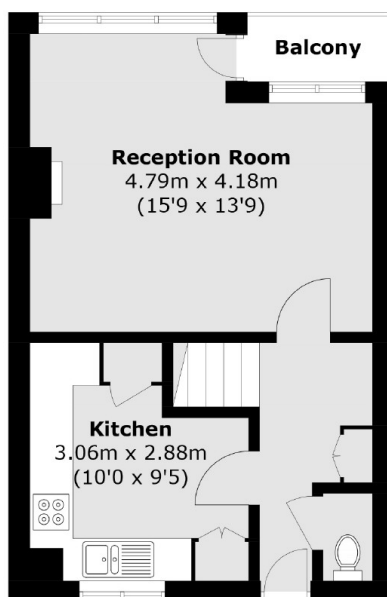
### Features

- OIEO £425,000
- Split Level Flat
- Private Balcony
- Long Lease
- Downstairs Guest WC
- Permit Parking

# Bath Terrace, London, SE1



## Second Floor



## First Floor

Total area (approx.): 75.7 sq. m (814.9 sq. ft)  
Balcony: 1.8 sq. m (19.4 sq. ft)