



Old Victoria Hall, 14 Rollestone Street, Salisbury



A characterful and well presented one bedroom apartment, coming fully furnished in a city centre location.

The Property

Flat 6 is a top floor apartment within Old Victoria Hall, a listed Georgian property on Rollestone Street which was converted into a development of six apartments, completed in 2021.

The grand, welcoming communal entrance hall and wide feature staircase leads up to the first floor, with a smaller secondary staircase up to the second floor landing and private front door opening into the apartment. The hallway has a good-sized utility cupboard with washing machine and coat hooks, and a separate WC adding further practicality.

The main hub of the home is a comfortable and open kitchen/dining/living area. The modern kitchen is well equipped with the full suite of integrated appliances, including slimline dishwasher and fridge freezer, whilst the exposed wooden beams and furnishings compliment the living and dining area to create a characterful and welcoming space. Off the kitchen is the large double bedroom with contemporary ensuite bathroom, coming with some built-in wardrobe storage and an additional one-way fire exit door into the 2nd floor landing.

Old Victoria Hall further benefits from a large basement accessible by each occupier that provides ample space for bikes and additional storage.

Flat 6 Old Victoria Hall, 14 Rollestone Street, Salisbury, SP1 1DX

Rent
£1,300 PCM



Features

- Top floor apartment
- Light and spacious
- Integrated appliances
- Ensuite bathroom
- Secure communal basement
- Recently developed
- Character features
- Large double bedroom
- Additional WC
- City centre location

Tenancy & Restrictions

To be let on an Assured Periodic Tenancy, with a 12 month protected period, rolling monthly with requirement for a two month tenants' notice. No smokers.

EPC Rating

E (50)

Outgoings

Council Tax: Wiltshire £2,468.97
(2026/27) Band C

Size

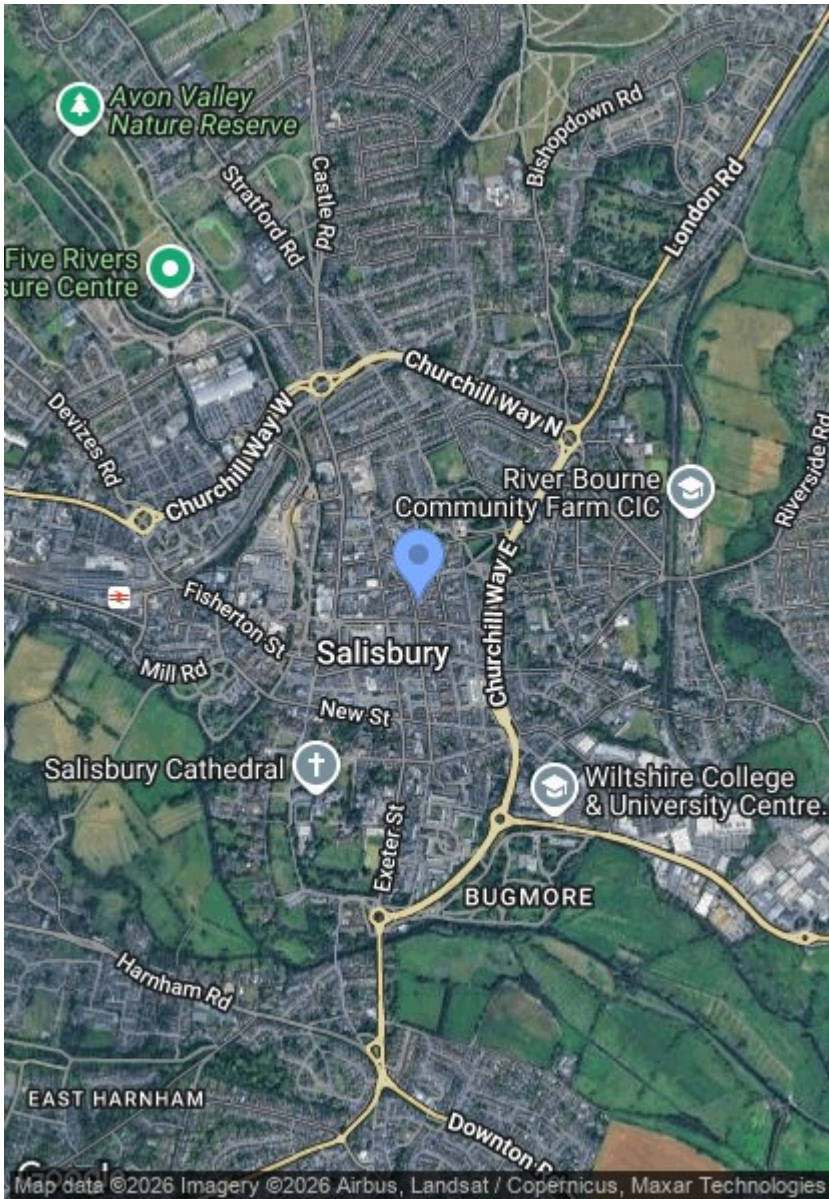
617.00 sq ft

Location

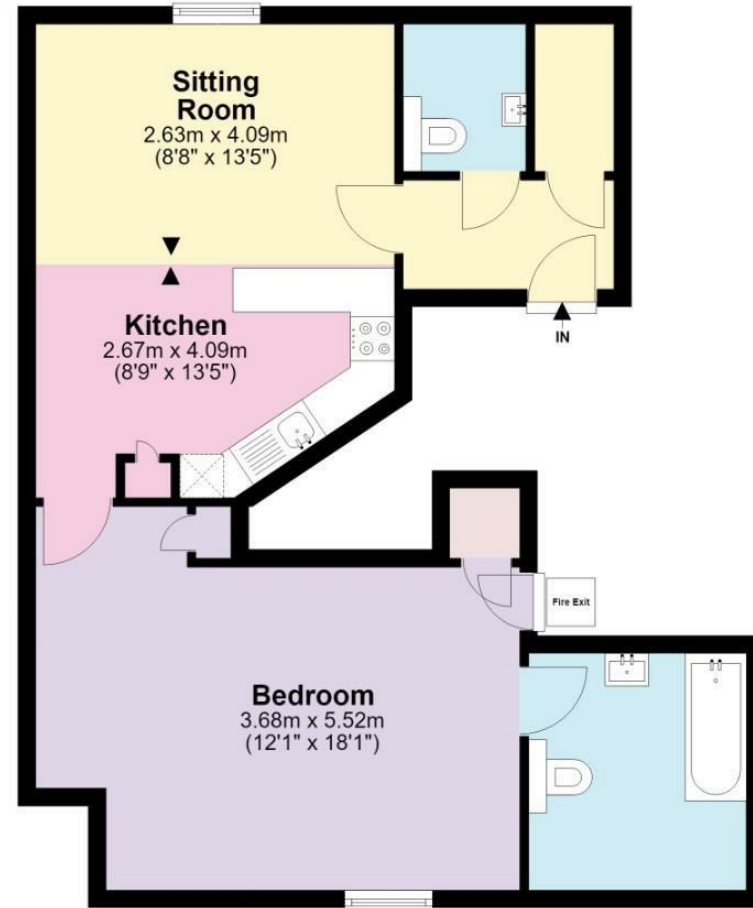
Rollestone Street is part of Salisbury's Medieval Chequer system and is a short, level walk from all of the city's excellent range of facilities – shopping, leisure and cultural.

The market square, which has a twice weekly charter market, lies at the end of Endless Street whilst Salisbury also has a mainline train station to London Waterloo (journey time approximately 90 minutes).





Second Floor Flat



Total area: approx. 57.3 sq. metres (617.3 sq. feet)

COPYRIGHT CLEARPLANZ
 Plan for illustration only. Windows and doors are approximate. Whilst care is taken preparing this plan, please check details before making decisions reliant upon them.
 Measured and drawn to RICS guidelines

Disclaimer Notice Myddelton & Major and their clients give notice that:- i) they have no authority to make or give any representations or warranties in relation to the property, ii) these particulars do not form part of any offer or contract and must not be relied upon as statements or representations of fact. iii) any areas, measurements or distances are approximate. The text, photographs and plans are for guidance only and are not necessarily comprehensive. It should not be assumed that the property has all the necessary planning, Building Regulation or other consents, and any services, equipment or facilities have not been tested by the agent. iv) the purchaser must satisfy themselves by inspection or otherwise.