



Lansdowne Way  
London, SW8

CHESTERTONS









Available for SHORT LET with bills included.

Nestled in the vibrant heart of Zone 1 London, this enchanting three-bedroom home offers the perfect blend of traditional charm and rustic elegance. Despite its central location, the residence feels like a serene retreat, with lush greenery framing the windows and providing a peaceful escape from the urban bustle.

Inside, classic design elements create a warm and inviting atmosphere, while the two exquisitely crafted bathrooms enhance the property's timeless appeal. The heart of the home is its double reception room, where light floods in through generous windows located to both the front and back, creating a sense of airy space perfect for both relaxation and entertaining. The kitchen, with its classic yet refined design, flows seamlessly into the adjacent dining room, making it an ideal setting for family gatherings or intimate meals. Upstairs, three generously proportioned double bedrooms offer their own unique character.

A truly unique sanctuary that combines the best of both worlds — character and style, with the convenience of city living.

- Short Let
- Bills Included
- House
- Private Garden
- Two Bathrooms
- Furnished

### £6,800 pcm

Additional tenant charges apply (fees apply to non-AST tenancies only)

Tenancy Agreement Fee: £300

References per Tenant/Guarantor: £60

Inventory check (approx. £100 – £250 inc. VAT)

[chestertons.co.uk/property-to-rent/applicable-fees](https://chestertons.co.uk/property-to-rent/applicable-fees)

**Minimum Term:** 1 months  
**Deposit Required:** £6,276.92  
**Local Authority:** Lambeth  
**Council Tax Band:** G  
**EPC Rating:** To be confirmed  
**Furnished**

### *Chestertons Battersea Park & Nine Elms Lettings*

62-64 Battersea Bridge Road  
London  
SW11 3AG

[batterseapark@chestertons.co.uk](mailto:batterseapark@chestertons.co.uk)

02030408269

[chestertons.co.uk](https://chestertons.co.uk)

# Lansdowne Way, SW8

Approximate gross internal area

156.37 sq m / 1683 sq ft

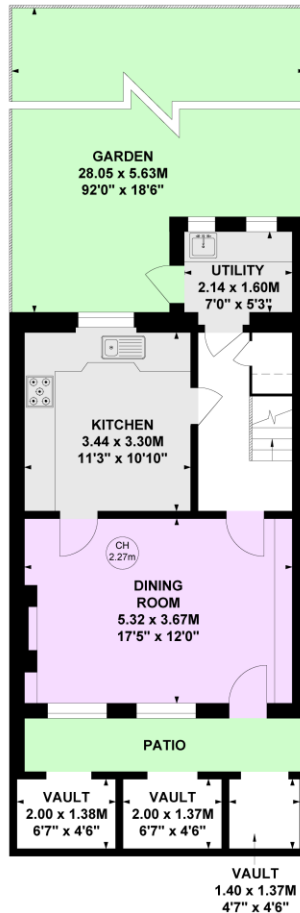
(Excluding Vaults)

Vaults

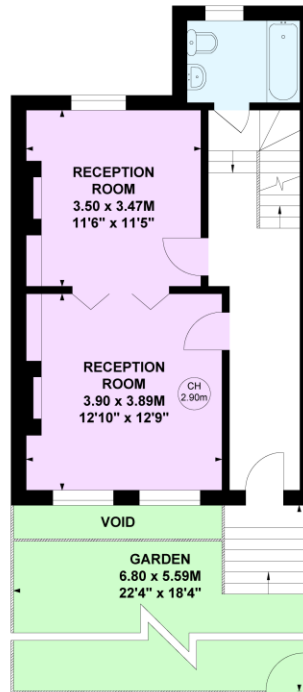
7.75 sq m / 83 sq ft



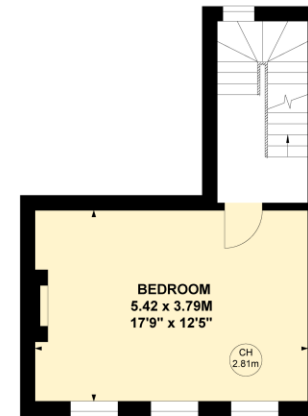
Key :  
CH - Ceiling Height



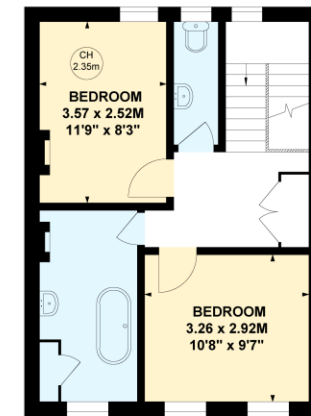
Lower Ground Floor



Raised Ground Floor



First Floor



Second Floor

Not to scale, for guidance only and must not be relied upon as a statement of fact.

All measurements and areas are approximate only

Chesterton UK Services Limited trading as Chestertons for themselves and for the vendor of this property whose agents they are, give notice that (i) these particulars do not constitute any part of an offer or contract, (ii) all statements contained within these particulars are made without responsibility on the part of Chestertons or the vendor, (iii) whilst made in good faith, none of the statements contained within these particulars are to be relied upon as a statement or representation of fact, (iv) any intending purchasers must satisfy themselves by inspection or otherwise as to the correctness of each of the statements contained within these particulars, (v) the vendor does not make or give either Chestertons or any person in their employment any authority to make or give representation or warranty whatsoever in relation to this property. Wide angle lenses may be used. ©Copyright Chestertons | Chesterton Global Ltd | Registered Office 40 Connaught Street, Hyde Park, London W2 2AB Registered Company Number 05334580.



This paper is  
100% recyclable