

Deerhurst

Portsmouth

LEXTONS / SALES  
LETTINGS  
AUCTIONS  
COMMERCIAL



## About the property

FOR SALE BY AUCTION 24th June 2026

A three-bedroom semi-detached home offering approximately 1,100 sq ft of internal accommodation, situated in a quiet and well-regarded residential area just minutes from Portsmouth Marina and Boatyard. Requiring a programme of improvement, the property presents an excellent opportunity for owner-occupiers, investors, or developers seeking to add value.

The ground floor comprises a spacious entrance hallway, separate W.C., and a generous reception room leading through to the kitchen and dining area. To the rear, a conservatory overlooks the private rear garden, providing additional living space and access to the outside area.

The first floor offers three well-proportioned bedrooms together with a family bathroom.

Externally, the property benefits from a private rear garden, ideal for landscaping or family use.

Well located for local amenities, transport links, and waterfront attractions, this is a rare chance to acquire a substantial home with strong potential in a sought-after Portsmouth setting.

# Deerhurst Crescent Portsmouth

£100,000



3

BEDROOM

2

RECEPTION

1

BATHROOM





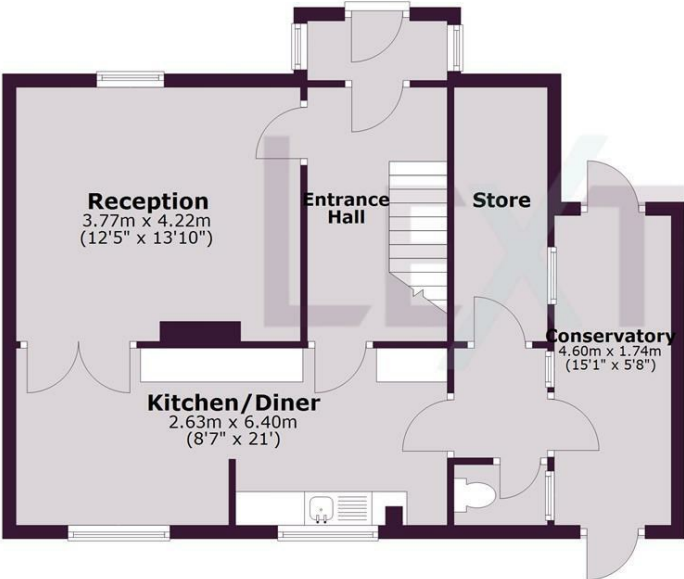


SCAN HERE TO VIEW ALL AUCTION PROPERTIES



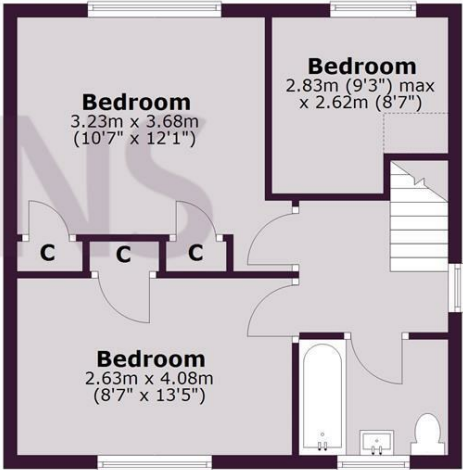
**Ground Floor**

Approx. 61.7 sq. metres (664.5 sq. feet)



**First Floor**

Approx. 41.6 sq. metres (447.5 sq. feet)



Total area: approx. 103.3 sq. metres (1112.0 sq. feet)

Whilst every care has been taken to ensure accuracy, dimensions are approximate and for illustrative purposes only.  
Created for exclusive use for Lextons. All rights reserved.  
Plan produced using PlanUp.

Whilst every care has been taken to ensure accuracy, dimensions are approximate and for illustrative purposes only.

Created by Lextons. All rights reserved.

Energy Efficiency Rating		Current	Potential
Very energy efficient - lower running costs			
(92 plus) A			
(81-91) B			
(69-80) C			73
(55-68) D			
(39-54) E			
(21-38) F			
(1-20) G		26	
Not energy efficient - higher running costs			
England & Wales		EU Directive 2002/91/EC	