



# Golden Bank Cottage

Patshull Road, Pattingham, WV6 7DU

peterjames  
PROPERTY

# Golden Bank Cottage

Tettenhall – 6.8 miles

Wolverhampton – 7.1 miles

(Distances are approximate)

Golden Bank Cottage occupies a delightful position on the south side of Patshull Road, just west of the highly regarded village of Pattingham.

Approximately 0.16 Acre plot

Kitchen

Laundry room

Downstairs shower room

Lounge with dual aspect window and log burner

First floor landing

Three double bedrooms

First floor WC

Stunning views over open fields

Driveway parking

Gardens to three sides

Potential to extend subject to planning



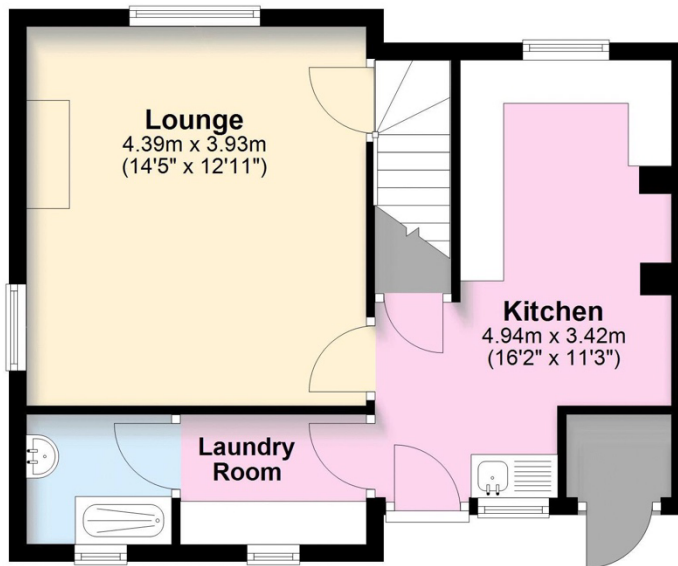


**Golden Bank Cottage  
Pattingham**

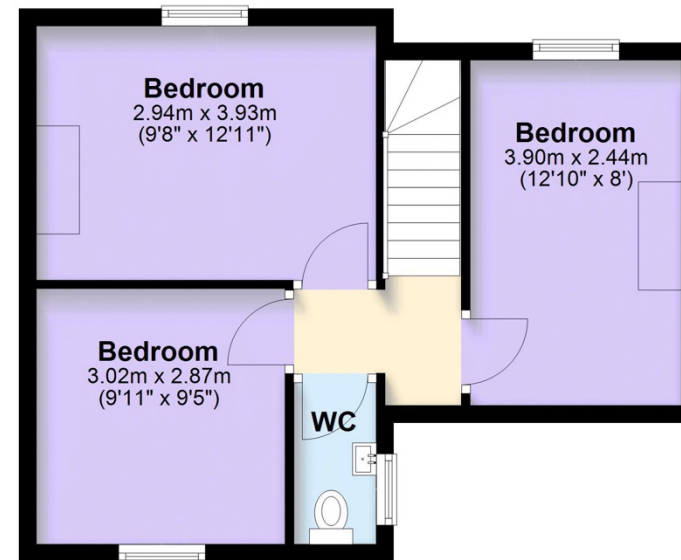
Approximate gross internal area of  
79.1 sq.m. 851.4 sq.ft.

MEASUREMENTS ARE APPROXIMATE.  
NOT TO SCALE.

**Ground Floor**



**First Floor**



**EPC** - The EPC is attached to these particulars. If it has become detached or is lost, please contact us for a further copy.

**Fixtures and Fittings** - All carpets and curtains are excluded from the sale but may be available by separate negotiation.