



## High Street, Biggleswade, SG18 0JE

Offers over £140,000



**\*\*\*BRIGHT AND AIRY ONE DOUBLE BEDROOM FIRST FLOOR APARTMENT IN CONVENIENT TOWN CENTRE LOCATION\*\*\***

Forming a part of the former 'Westminster Chambers' building on the High Street in Biggleswade and within easy reach of all the shops, bars, restaurants and of course the mainline station, this lovely one bedroom first floor apartment is offered CHAIN FREE and benefits from gas fired radiator heating, Georgian style sash windows, a fitted kitchen with oven and hob and a modern fitted shower room.

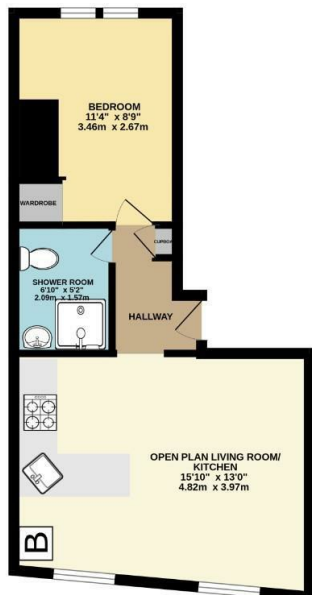
Viewing is essential to appreciate this character apartment!!

### Viewing

To arrange a viewing on this property or require further information please contact one of our team on 01480 775900

- Striking Town Centre Apartment
- One Double Bedroom
- Bright And Alry Open Plan Living Room/ Kitchen
- Gas Fired Radiator Heating (With Recently Installed Combination Boiler)
- Georgian Style Sash Windows
- Fitted Shower Room
- Kitchen With Built In Oven And Hob
- Walking Distance To All Amenities
- 105 Year Lease
- Chain Free

FIRST FLOOR  
349 sq.ft. (32.5 sq.m.) approx.



Energy Efficiency Rating		Current	Potential
Very energy efficient - lower running costs			
(92 plus) <b>A</b>			
(81-91) <b>B</b>			
(69-80) <b>C</b>		74	76
(55-68) <b>D</b>			
(39-54) <b>E</b>			
(21-38) <b>F</b>			
(1-20) <b>G</b>			
Not energy efficient - higher running costs			
<b>England &amp; Wales</b>		EU Directive 2002/91/EC	

TOTAL FLOOR AREA: 349 sq.ft. (32.5 sq.m.) approx.  
While every attempt has been made to ensure the accuracy of the floorplan, measurements of doors, windows, spaces and any other items are approximate and no responsibility is taken for any error, omission or misstatement. This plan is for guidance purposes only and should be used as such by any prospective purchaser. The services, systems and appliances shown have not been tested and no guarantee, as to their operability or efficiency can be given.  
Made with floorplan 32020



These particulars, whilst believed to be accurate are set out as a general outline only for guidance and do not constitute any part of an offer or contract. Intending purchasers should not rely on them as statements of representation of fact, but must satisfy themselves by inspection or otherwise as to their accuracy. No person in this firm's employment has the authority to make or give any representation or warranty in respect of the property.