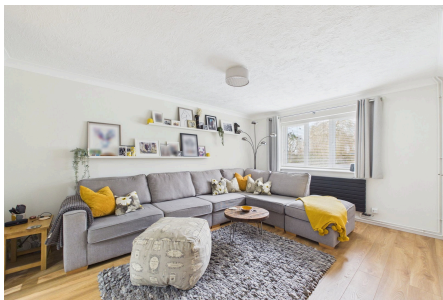


# Robinsons Close, Mellis, Eye, IP23 8DJ

Offers Over £260,000

3 1 2



Significantly enhanced and upgraded, this beautifully presented house occupies a sought after position, set back from the green and boasting a stunning outlook

## Key Features

- Vendor found onwards
- extended and significantly enhanced
- immaculacy and beautifully presented throughout
- Off road parking
- Freehold
- stunning views over Mellis Green
- Landscaped gardens with large garden house/ home office
- over 836 sqft
- Council Tax B
- EPC - D

