



Brunswick Centre, WC1N

£650,000

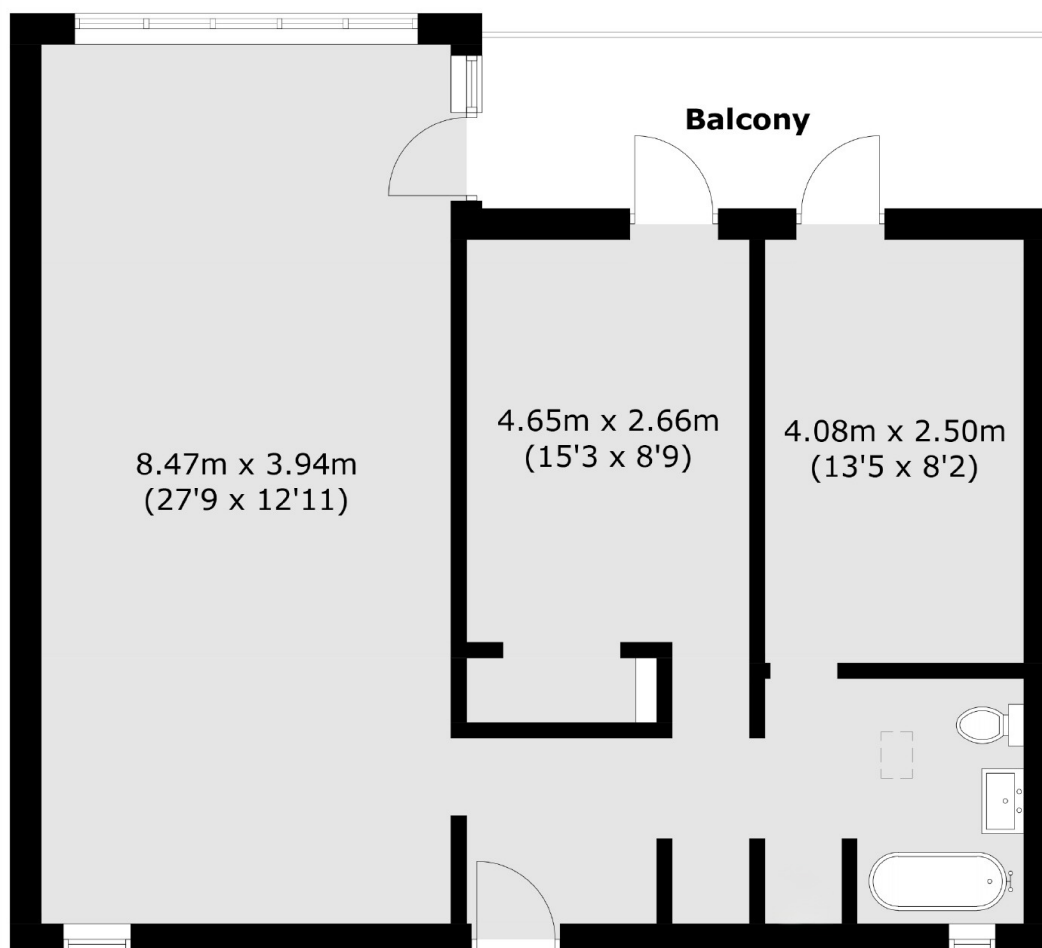
Located within the iconic Grade II listed Brunswick Centre, this property presents a rare opportunity for complete refurbishment. The apartment has been stripped to bare brick, offering a blank canvas for personalisation and transformation. It features a private balcony and comes with a 47-year lease, making it an ideal project for those looking to create a bespoke living space in a distinctive architectural landmark.

Foundling Court is well positioned within the Brunswick Centre offering endless shops and access to fantastic transport links, London's universities and marvellous green spaces.

Features

- Two Double Bedrooms
- Re-development Opportunity
- Private Balcony
- Iconic Grade II Listing
- Cash Buyers Only
- No Onward Chain

Brunswick Centre, London, WC1N



Total area (approx.): 70.2 sq. m (755.6 sq. ft)
Balcony area (approx.): 9.0 sq. m (96.8 sq. ft)

Dexters

Bloomsbury
55-56 Coram Street
London
WC1N 1HB
Sales
020 7833 4466

Energy Rating: E. We aim to make our particulars both accurate and reliable. However they are not guaranteed; nor do they form part of an offer or contract. If you require clarification on any points then please contact us, especially if you're traveling some distance to view. Please note that appliances and heating systems have not been tested and therefore no warranties can be given as to their good working order.

 **RICS** | Regulated
Estate Agent
and Letting Agent

[dexters.co.uk](https://www.dexters.co.uk)