



A FOUR/FIVE BEDROOM, TWO BATHROOM HOME IN A DESIRABLE LOCATION

Evelyn Drive, Pinner, HA5 4RX

ROBSONS

Evelyn Drive, Pinner, HA5 4RX

ENTRANCE HALLWAY • THROUGH LIVING / DINING ROOM • GENEROUS KITCHEN • FOUR BEDROOMS • STUDY / FIFTH BEDROOM • TWO FAMILY BATH / SHOWER ROOMS • REAR GARDEN • OFF-STREET PARKING • SMALL GARAGE FOR STORAGE

Description

Positioned within the desirable Pinner Wood Park Estate, just a short distance from both Hatch End and Pinner's amenities, is this charming four/five bedroom, two-bathroom family home. Offering well-proportioned interiors alongside a generous rear garden, the property provides the ideal backdrop for family living.

The property comprises a spacious reception room that flows through to a dining area with access to the garden. There is a good-sized kitchen with ample storage, four bedrooms (two with fitted wardrobes), a study/fifth bedroom, and two family bath / shower rooms. The rear garden is well-maintained, featuring a lawn with shrub borders and a patio area.





Off-street parking is available at the front of the property, via your own driveway, as well as access to a small garage for storage.

Location

Evelyn Drive is ideally positioned for both Hatch End and Pinner High Streets, both offering a variety of shopping facilities, restaurants, coffee houses and popular supermarkets. For commuters, the Overground is available at Hatch End Station, with the Metropolitan Line available at nearby Pinner Station. Local bus routes are also easily accessible.

The area is well served by primary and secondary schooling, with Pinner Wood Primary and Grimsdyke Primary School close by, as well as children's play areas and recreational facilities.

Additional Information

Tenure: Freehold

Local Authority: London Borough of Harrow

Council Tax Band: G

Energy Efficiency Rating: E

For additional information, please refer to www.robsonswb.com or call us on: 020 8866 8083.



Approximate Gross Internal Area
 Ground Floor = 71.0 sq m / 764 sq ft
 First Floor = 62.4 sq m / 672 sq ft
 Garage = 2.3 sq m / 25 sq ft
 Total = 135.7 sq m / 1,461 sq ft
 (Including Eaves)

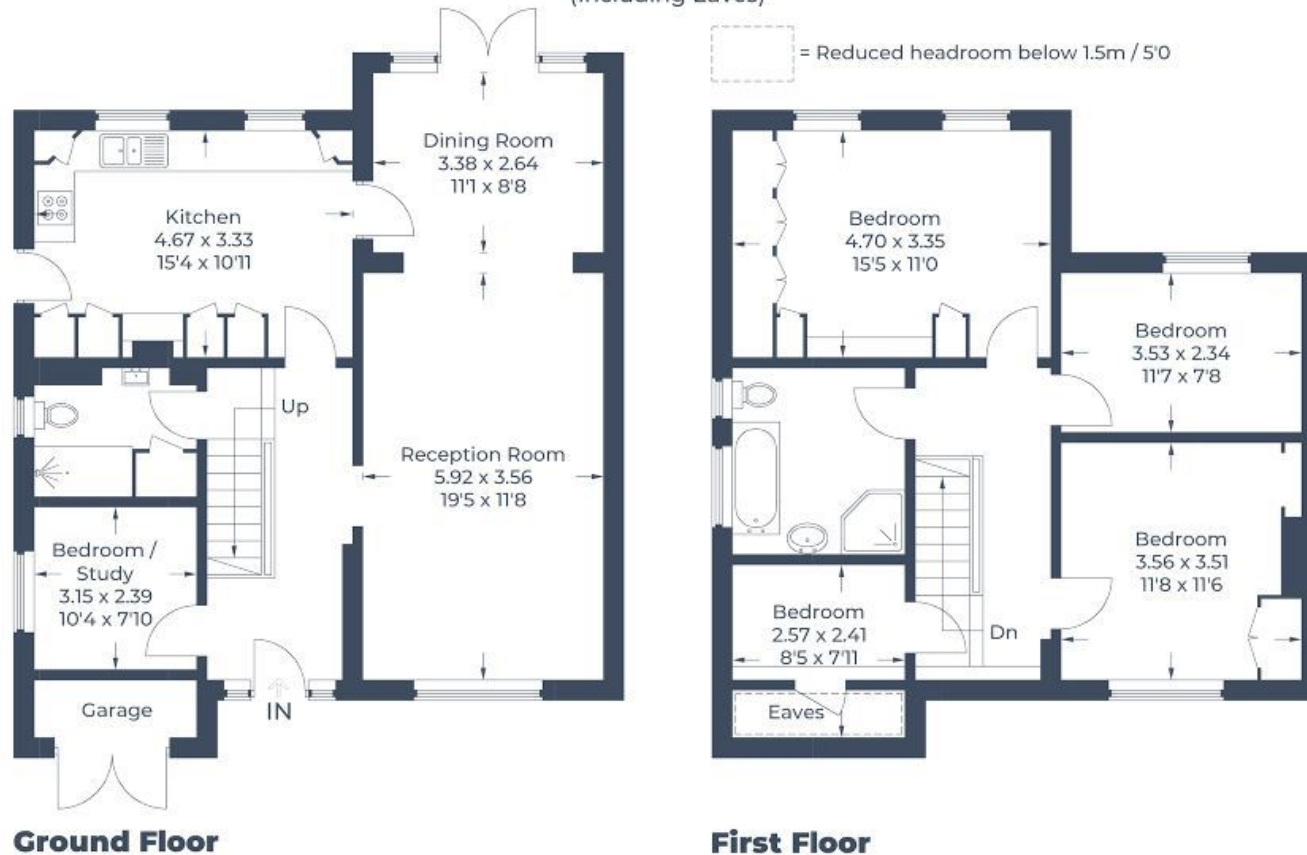


Illustration for identification purposes only,
 measurements are approximate, not to scale.
 © CJ Property Marketing Produced for Robsons



1 High Street, Pinner HA5 5PJ
 Tel: 020 8866 8083 Email: pinner@robsonswb.com
www.robsonswb.com



Important notice: Robsons, their clients and any joint agents give notice that 1: They are not authorised to make or give any representations or warranties in relation to the property either here or elsewhere, either on their own behalf or on behalf of their client or otherwise. They assume no responsibility for any statement that may be made in these particulars. These particulars do not form part of any offer or contract and must not be relied upon as statements or representations of fact. 2: Any areas, measurements or distances are approximate. Plot sizes and dimensions are taken from Promap and are approximate. The text, photographs and plans are for guidance only and are not necessarily comprehensive. It should not be assumed that the property has all necessary planning, building regulation or other consents and Robsons have not tested any services, equipment or facilities. Purchasers must satisfy themselves by inspection or otherwise.