



**CLIVEPEARCE**  
Now you're moving

1 Bedrooms

Retirement Property

Asking Price

£79,950

Located in

Truro



[www.clivepearceproperty.com](http://www.clivepearceproperty.com)



# Quay Street

Truro | Cornwall | TR1 2GA



Situated in the vibrant heart of Truro City, this delightful one-bedroom retirement property is purpose built for those aged over 60. Situated on the second floor, the apartment offers a comfortable and secure living environment, perfect for those seeking a peaceful yet engaging community.

The property boasts a spacious double bedroom, providing ample room for relaxation and rest. Residents can enjoy the benefits of communal living, with a welcoming communal lounge that serves as a social hub for gatherings and activities. Additionally, the communal laundry room and refuse room add to the convenience of daily living, ensuring that practical needs are easily met.

One of the standout features of this retirement property is the guest suite, allowing friends and family to visit and stay comfortably. The absence of an onward chain simplifies the purchasing process, making it an ideal choice for those looking to settle into a new home without delay.

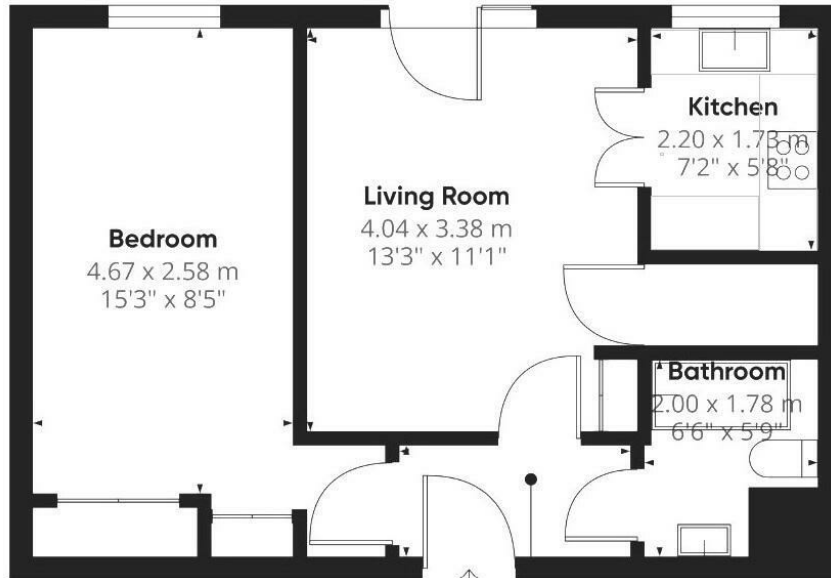
With its prime location on Quay Street, residents will find themselves within easy reach of local amenities, shops, and services, enhancing the overall quality of life. This property presents a wonderful opportunity for those seeking a supportive and friendly community in the heart of Truro. Whether you are looking to downsize or simply wish to embrace a more leisurely lifestyle, this retirement apartment is sure to meet your needs.

# Quay Street

£79,950 Leasehold



- No onward chain and move in ready
- Retirement property for over 60s
- Communal living room for socialising
- Guest suite for visitors
- Second floor apartment with Juliet balcony
- One double bedroom flat
- Located in Truro city centre
- Convenient communal laundry room
- Refuse room for easy waste disposal
- Ideal city location, explore Truro easily



## Council Tax Band B

### Local Authority

Agents Note: Whilst every care has been taken to prepare these particulars, they are for guidance purposes only. All measurements are approximate and are for general guidance purposes only and whilst every care has been taken to ensure their accuracy, they should not be relied upon and potential buyers/tenants are advised to recheck the measurements.

Energy Efficiency Rating		Current	Potential
Very energy efficient - lower running costs			
(92 plus) <b>A</b>			
(81-91) <b>B</b>			
(69-80) <b>C</b>		79	82
(55-68) <b>D</b>			
(39-54) <b>E</b>			
(21-38) <b>F</b>			
(1-20) <b>G</b>			
Not energy efficient - higher running costs			
<b>England &amp; Wales</b>		EU Directive 2002/91/EC	

31 Lemon Street  
Truro  
Cornwall  
TR1 2LS



**CLIVEPEARCE**  
Now you're moving

hello@clivepearceproperty.com

01872 272622

www.clivepearceproperty.com