

oakheart

£1,100 Per Month

Per Month

Coronation Road, Ipswich

A recently refurbished three-bedroom mid-terrace house, ideally situated on Coronation Road in the popular IP4 area of Ipswich, within easy reach of the town centre, local schools, and everyday amenities.

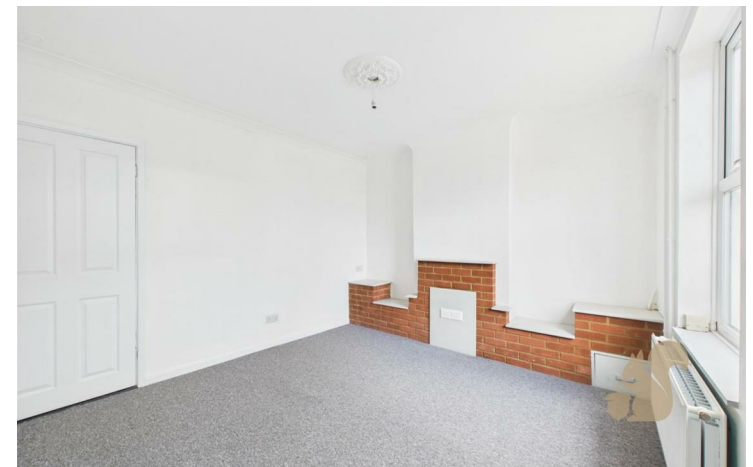
The property offers a spacious and versatile living area, providing an ideal space for both relaxing and entertaining. The accommodation further comprises three

well-proportioned bedrooms, making it well suited to families, professional sharers, or couples in need of additional space.

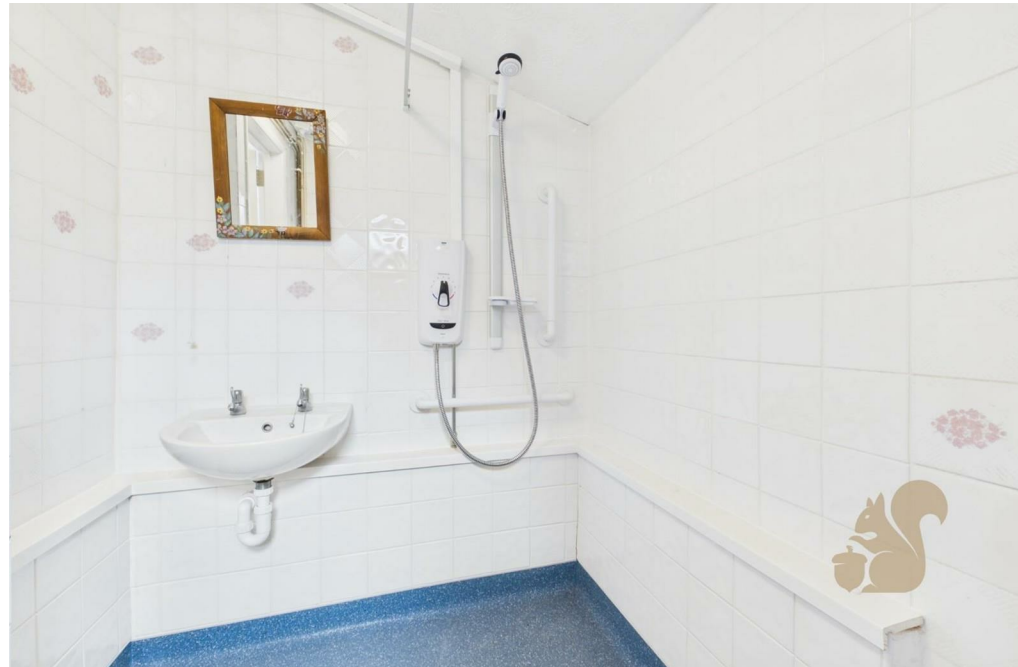
Recently refurbished throughout, the property presents a modern and well-maintained interior with a fresh and contemporary finish. Additional benefits include a private rear garden and on-street parking, adding both

convenience and practicality.

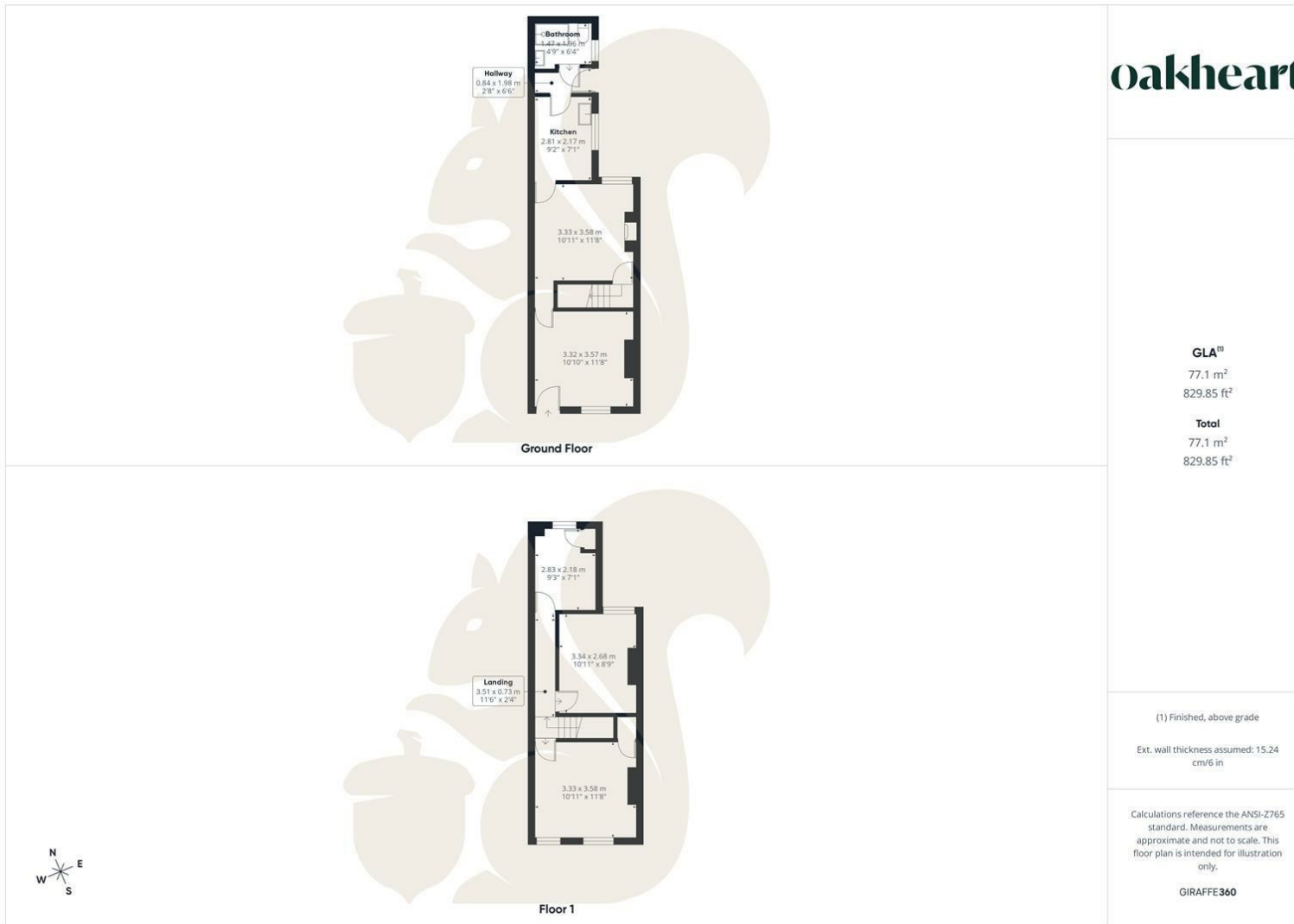
Well positioned for transport links, local shops, and nearby amenities, this is a well-presented home offering comfortable and convenient living in a sought-after residential location.











oakheart

GLA¹⁾
77.1 m²
829.85 ft²

Total
77.1 m²
829.85 ft²

(1) Finished, above grade

Ext. wall thickness assumed: 15.24 cm/6 in

Calculations reference the ANSI-Z765 standard. Measurements are approximate and not to scale. This floor plan is intended for illustration only.

GIRAFFE360

Local Authority:
Ipswich Borough Council

Tenure:

Council Tax Band:
B

Energy Efficiency Rating

	Current	Potential
<i>Very energy efficient - lower running costs</i>		
(92 plus) A		
(81-91) B		89
(69-80) C	71	
(55-68) D		
(39-54) E		
(21-38) F		
(1-20) G		
<i>Not energy efficient - higher running costs</i>		
England & Wales	EU Directive 2002/91/EC	

Agents Note: Whilst every care has been taken to prepare these particulars, they are for guidance purposes only. All measurements are approximate and are for general guidance purposes only and whilst every care has been taken to ensure their accuracy, they should not be relied upon.

Oakheart Ipswich Lettings
01473 251 907
ipswichlettings@oakheart.co.uk
12 Upper Brook Street, Ipswich, Suffolk, IP4 1EF

oakheart