



Apt 19 2 Neptune Place, Liverpool, L8 5AH  
£1,175 Per Month

www.cityresidential.co.uk



## About the Property

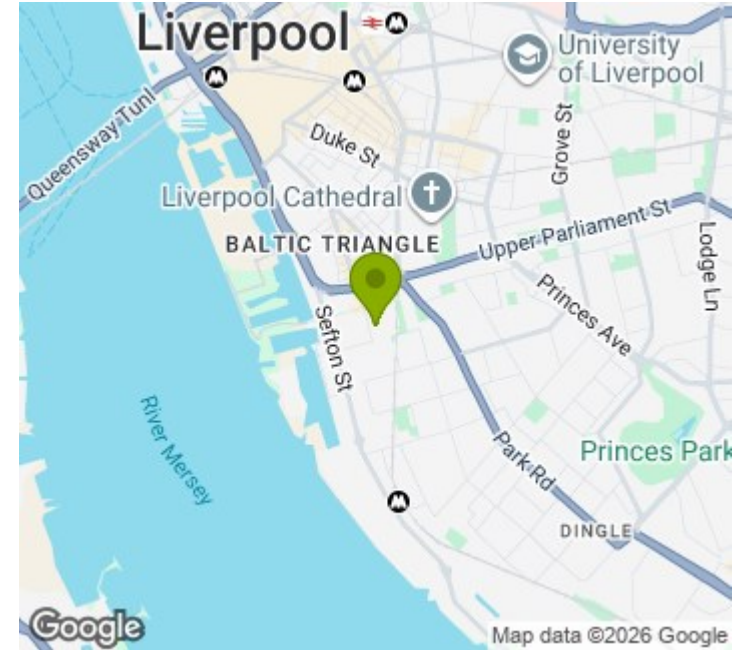
Available Now!!

City Residential is delighted to offer this stunning two-bedroom third floor apartment at the sought-after Neptune Place development. This contemporary and bright apartment provides urban living with the renowned Baltic Triangle of Liverpool just a stone's throw away.

The property comes fully furnished to a high standard and briefly comprises: an Entrance Hall, an Open Plan Living/Dining area with a modern fitted Kitchen, two spacious double bedrooms with fitted wardrobes and a family bathroom complete this apartment, an allocated parking space is also included within the rental figure!

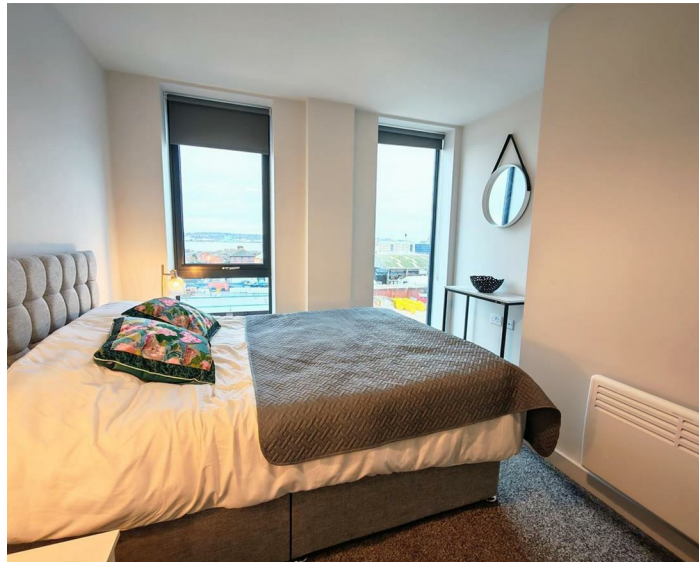
We expect high demand for this stunning property; therefore, early viewing is strongly advised. Contact City Residential today!!

- Available for immediate move in!!
- Must be viewed!
- Baltic Triangle location
- Secure allocated parking included
- Fully furnished to a high spec
- EPC Rating - C
- Council Tax Band - C
- Deposit Payable £1355



## Energy Efficiency Rating

	Current	Potential
Very energy efficient - lower running costs		
(92 plus) <b>A</b>		
(81-91) <b>B</b>		
(69-80) <b>C</b>	<b>76</b>	<b>76</b>
(55-68) <b>D</b>		
(39-54) <b>E</b>		
(21-38) <b>F</b>		
(1-20) <b>G</b>		
Not energy efficient - higher running costs		
<b>England &amp; Wales</b>	EU Directive 2002/91/EC	



City Residential  
81/87 Victoria Street, The Old Haymarket, Liverpool L1 6DG  
T: 0151 231 6100 F: 0151 231 6105  
E: sales@cityresidential.co.uk



WWW.  
**cityresidential**  
.co.uk