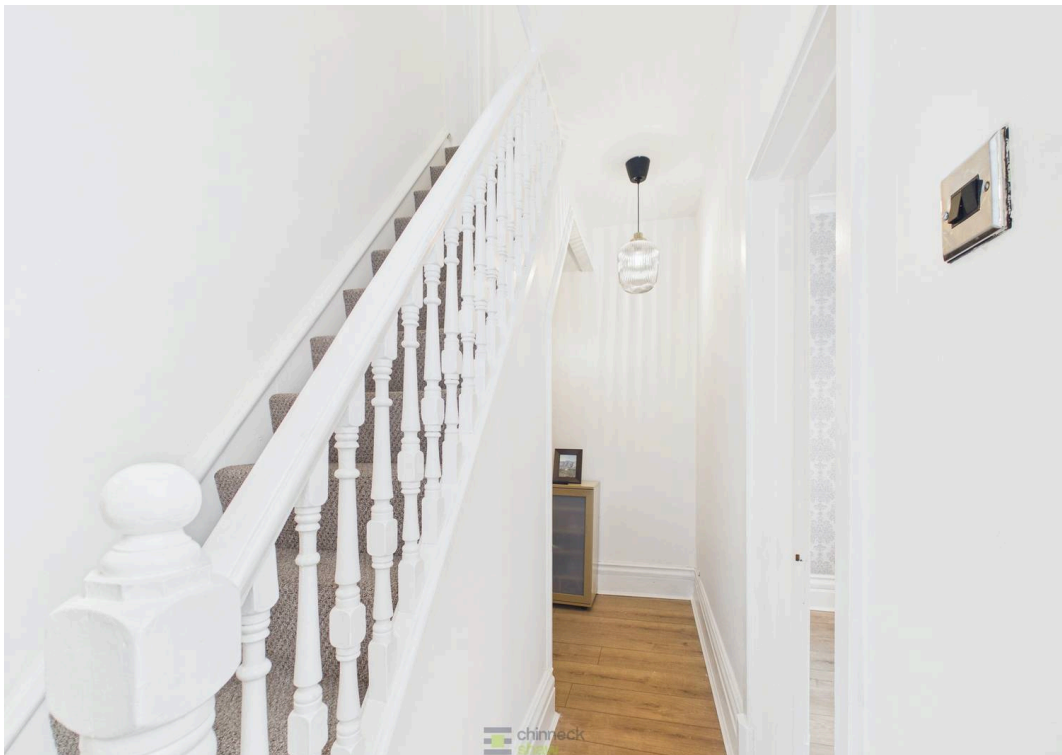




61 Chesterfield Road, Portsmouth

Offers in Region of £239,500

 chinneckshaw



61 Chesterfield Road

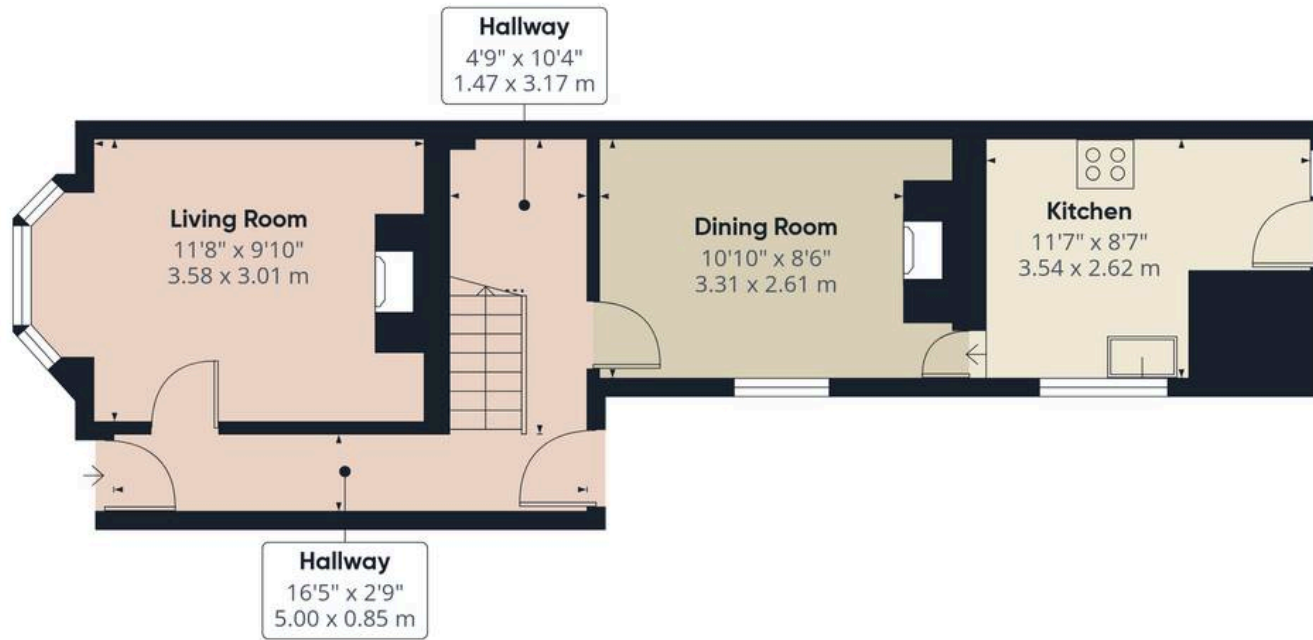
Portsmouth

Enter this beautifully presented two-bedroom terraced house, offering a blend of comfort and practicality in a well-connected neighbourhood. The bright living area and dining room are perfect for relaxing or entertaining, while the modern kitchen features contemporary fittings and ample storage for enjoyable meal preparation. A sunroom fills the home with natural light, providing a versatile space for morning coffee or quiet reading. Both bedrooms are generously sized; the second bedroom is currently used as a stylish home office, ideal for remote work or creative pursuits. The sleek bathroom provides a calming atmosphere with quality fixtures, and a handy loft offers extra storage or space for hobbies. The fresh décor means the property is ready for you to move straight in, avoiding renovation hassle.

Situated near Baffins Pond and Salterns Recreation Ground, you'll have easy access to green spaces and convenient road links and public transport. This home is perfect for first-time buyers, young families, or professionals seeking comfort and convenience in a vibrant community.

Material Information • Tenure: Freehold • Council Tax: Band B • Electricity: Mains Supply • Heating: Gas • Water Supply: Mains Supply • Sewage: Mains Supply • Broadband: Standard, Superfast and Ultrafast Fibre are all available in this area • Parking: On Street • Mobile: Ofcom official website checker states that EE, Vodafone, O2 and Three available in the area • Flood Risk: Low Risk

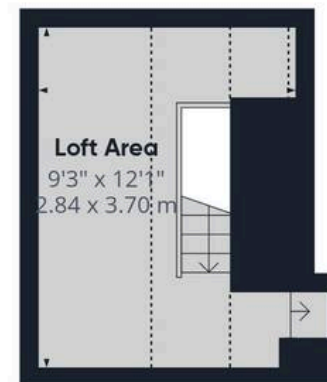




Ground Floor



Floor 1



Floor 2



Approximate total area⁽¹⁾

791 ft²

73.4 m²

Reduced headroom

76 ft²

7 m²

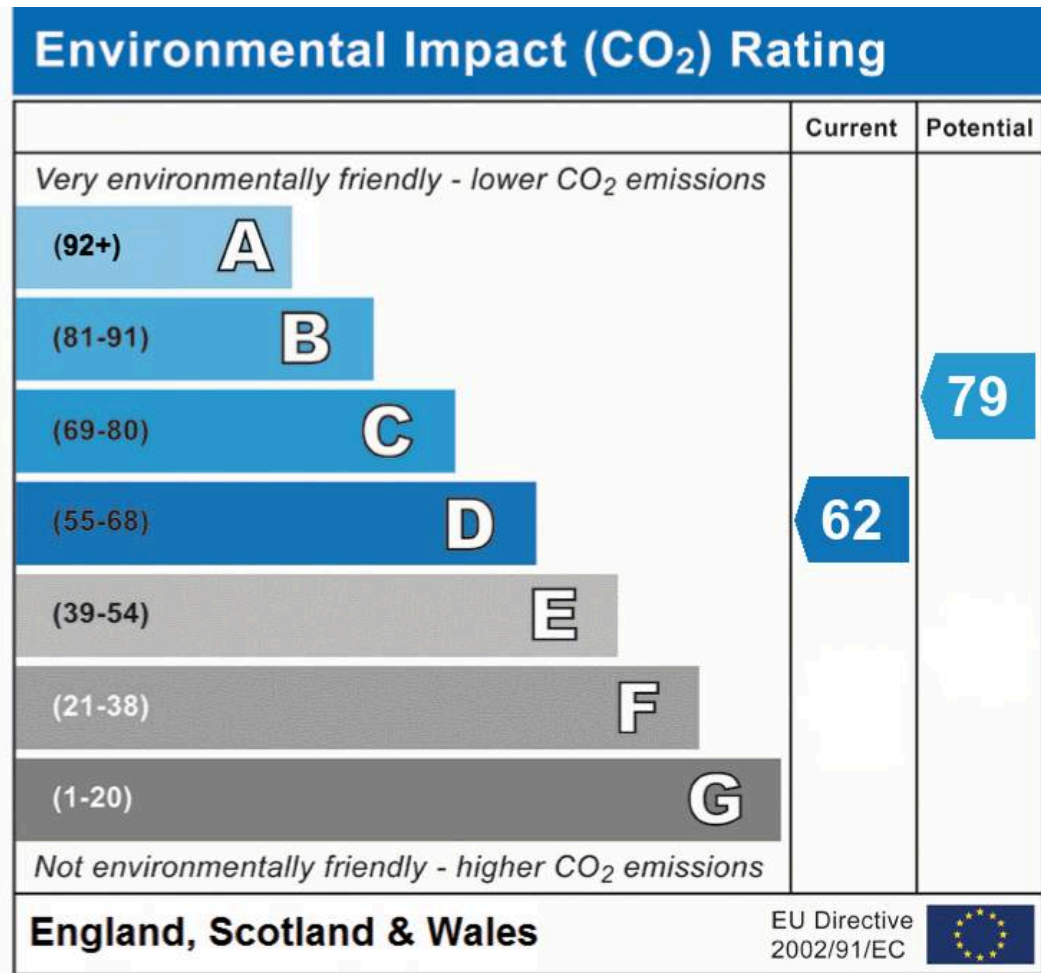
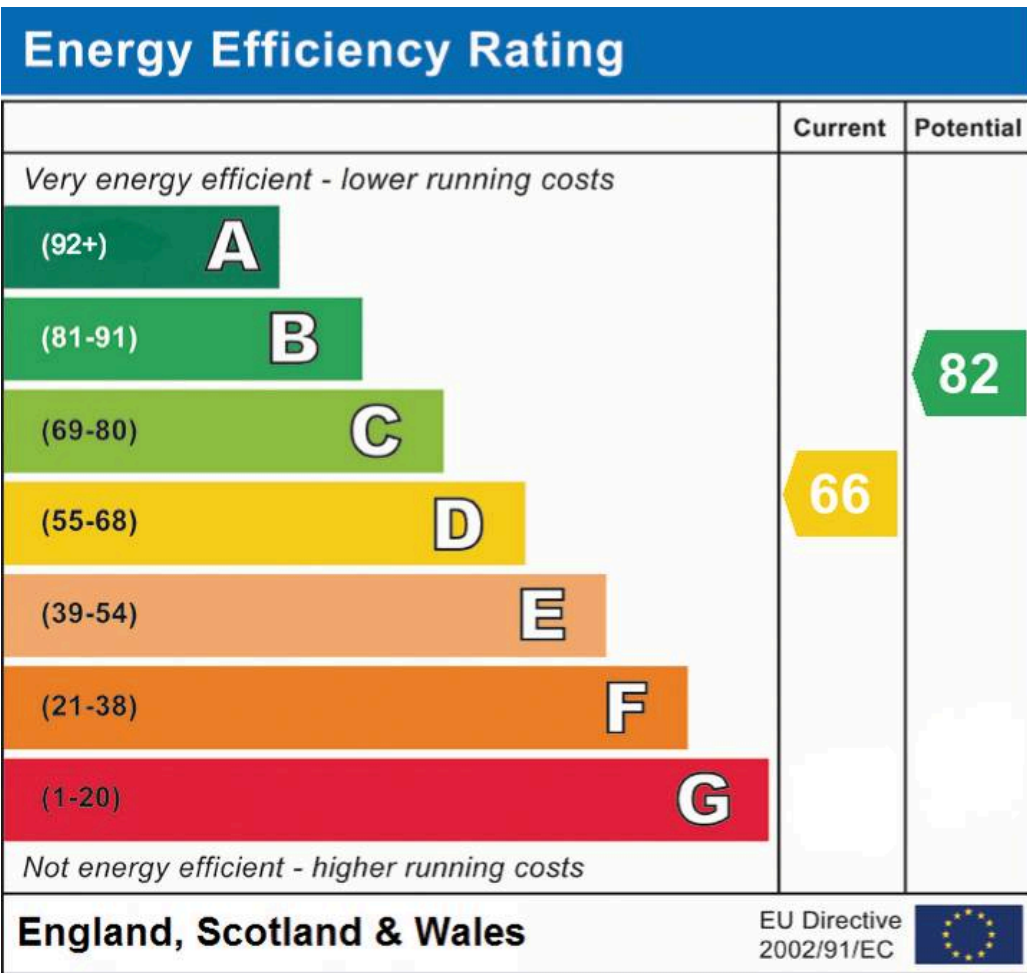
(1) Excluding balconies and terraces

Reduced headroom

..... Below 5 ft/1.5 m

Calculations reference the RICS IPMS 3C standard. Measurements are approximate and not to scale. This floor plan is intended for illustration only.

GIRAFFE 360



Chinneck Shaw

Bridge House, Milton Road, Portsmouth – PO3 6AN

023 9282 6731

hello@chinneckshaw.co.uk

www.chinneckshaw.co.uk/

Chinneck Shaw, Bridge House, Milton Road, PO3 6AN Consumer Protection from Unfair Trading Regulations 2008: These details are for guidance only and complete accuracy cannot be guaranteed. If there is any point which is of particular importance, verification should be obtained. They do not constitute a contract or part of a contract. All measurements are approximate. No guarantee can be given with regard to planning permissions or fitness for purpose. No apparatus, equipment, fixture or fitting has been tested. Items shown in the photographs are NOT necessarily included. Interested Parties are advised to check availability and make an appointment to view before travelling to see a property.