







## 41 Baycliff Drive

Brampton • Chesterfield • S40 1YQ

£105,000

Offered to the market with no upward chain is this one double-bedroom apartment, ideally situated in the well-connected Brampton area. The property benefits from close proximity to a wide range of everyday amenities, including shops, supermarkets, cafés, and the popular Chatsworth Road. A selection of nearby green spaces, such as Somersall Park and Queen's Park, are easily accessible, with the Peak District just a short drive away. Chesterfield town centre is within walking distance, and excellent transport links are available via bus routes, the train station, the M1, and surrounding road networks. The property presents an ideal opportunity for single professionals or as a buy-to-let investment. Accessed via the front door and stairs leading to the apartment, the accommodation opens into a spacious lounge diner positioned at the front of the property. This well-proportioned room offers ample space for both seating and dining. From here, an internal hallway provides useful storage and leads to the remaining rooms. To the rear is an L-shaped kitchen, featuring a range of cupboard units, integrated appliances, and space for freestanding appliances. The generously sized double bedroom is located to the left of the hallway and enjoys views over the rear garden. Opposite, the shower room comprises a tiled white three-piece suite, including a shower cubicle, wash basin, and WC. Externally, the property benefits from a communal lawn and patio area to the side, as well as one allocated parking space.





- Offered to the Market with No Upward Chain
- One Well Proportioned Double Bedroom Apartment
- Well Connected Brampton Area
- Walking Distance to Chesterfield Town Centre

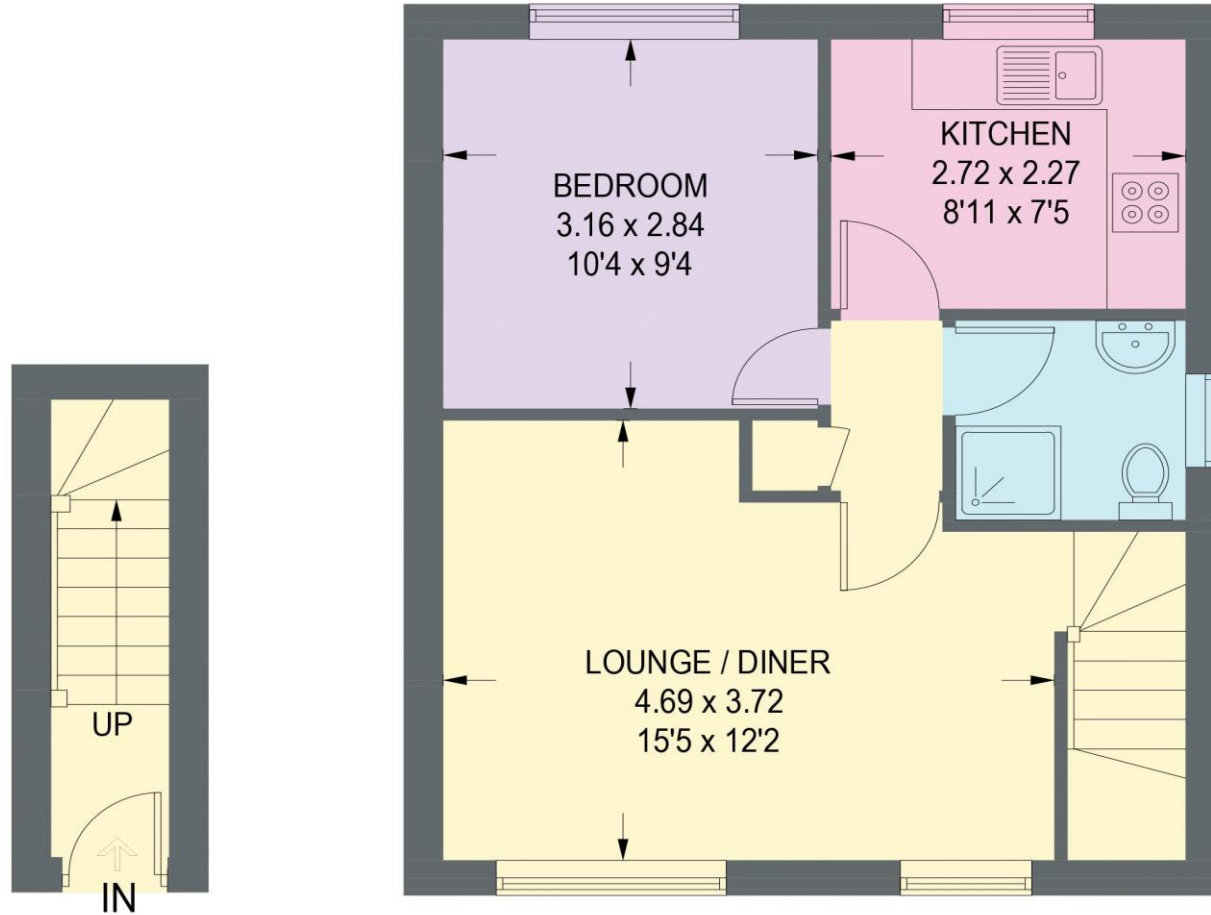
- Spacious Front Facing Lounge Diner
- L Shaped Kitchen w/ Integrated Appliances
- Three Piece Suite Shower Room
- Communal Lawn & Patio
- One Allocated Parking Space
- Council Tax Band A/EPC Rating C





# 41 BAYCLIFF DRIVE

APPROXIMATE GROSS INTERNAL AREA = 42.6 SQ M / 458.5 SQ FT



**GROUND FLOOR**  
**3.3 SQ M / 35.5 SQ FT**

**FIRST FLOOR = 39.3 SQ M / 423.0 SQ FT**

Illustration for identification purposes only, measurements are approximate, not to scale. (ID1306422)

