



Connells

Abbotsbury Road
Weymouth



Property Description

Connells welcome 107 Abbotsbury Road to the market! This wonderful family home allows ample living space along with period features for every member of the family to enjoy! The property boasts a spacious, dual aspect living room/dining room which offers light and airy living accommodation, with a kitchen which offers a variety of wall and base units and a utility room/shower room. The property offers FOUR DOUBLE BEDROOMS and ONE SINGLE BEDROOM, along with a family bathroom and a second WC for further convenience, with a staircase to the second floor. The property benefits from a SOUTHERLY FACING, private enclosed rear garden which is accessed from the kitchen, with invaluable rear access into the garden to enjoy. Connells thoroughly recommends a viewing in order to learn the true size and potential this property has to offer!

Living Room

Bay window to front, wooden style flooring, television point, telephone point, coal burner stove, radiator, archway to dining room.

Dining Room

Window to rear, wooden style flooring, two radiators and door leading to rear garden.

Kitchen

Fitted kitchen with a range of wall and base units incorporating a stainless steel sink drainer with worksurfaces over, window to side, space for dishwasher and fridge freezer, Door leading to utility and shower room.

Utility/Shower Room

Space and plumbing for washing machine and dishwasher, wash hand basin and walk in shower cubicle.

Entrance

Entrance Porch

Hallway

Wall mounted radiator, wooden style flooring, stairs leading to first floor.

First Floor

Landing

Stairs leading from the ground floor with doors leading to

Bedroom One

Bay window to front, power points, radiator,



Bedroom Three

Window to front, power points, and radiator.

Bedroom Four

Window to rear, radiator, carpeted and power points.

Bathroom

A white suite comprising a bath with overhead shower, a wash hand basin, and WC with contemporary blue tiling.

Separate W/C

Second Floor

Landing

Stairs leading from the first floor.

Bedroom Two

Window to front and rear aspect, exposed brick chimney breast, carpeted and radiator.

Bedroom Five

Window to front, radiator.

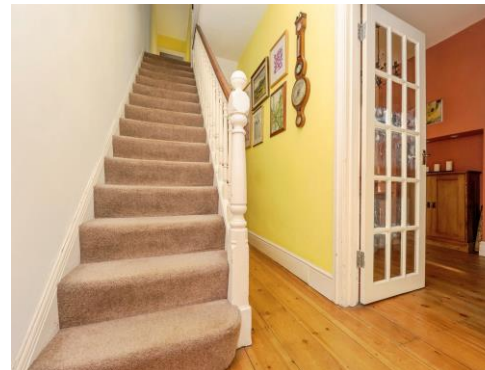
Outside

Front Garden

Brick wall enclosed garden with gate to access property.

Rear Garden

To the rear, the garden features a raised decking area, ideal for outdoor entertaining in the afternoon sun. A lawn leads to the rear access, framed by mature flower beds and established trees that lend a sense of privacy and greenery.









Total floor area 145.9 m² (1,571 sq.ft.) approx

This floor plan is for illustrative purposes only. It is not drawn to scale. Any measurements, floor areas (including any total floor area), openings and orientation are approximate. No details are guaranteed, they cannot be relied upon for any purpose and they do not form part of any agreement. No liability is taken for any error, omission or misstatement. A party must rely upon its own inspection(s). Powered by www.propertybox.io

Connells

To view this property please contact Connells on

T 01305 770 333
E weymouth@connells.co.uk

84 St. Thomas Street
 WEYMOUTH DT4 8EN

EPC Rating: C Council Tax
 Band: B

Tenure: Freehold

view this property online connells.co.uk/Property/WEY309563



1. MONEY LAUNDERING REGULATIONS Intending purchasers will be asked to produce identification documentation at a later stage and we would ask for your co-operation in order that there will be no delay in agreeing the sale. 2. These particulars do not constitute part or all of an offer or contract. 3. The measurements indicated are supplied for guidance only and as such must be considered incorrect. Potential buyers are advised to recheck measurements before committing to any expense. 4. We have not tested any apparatus, equipment, fixtures, fittings or services and it is in the buyers interest to check the working condition of any appliances.

Connells Residential is registered in England and Wales under company number 1489613, Registered Office is Cumbria House, 16-20 Hockliffe Street, Leighton Buzzard, Bedfordshire, LU7 1GN. VAT Registration Number is 500 2481 05.

See all our properties at www.connells.co.uk | www.rightmove.co.uk | www.zoopla.co.uk

Property Ref: WEY309563 - 0010