



## Harvest Lane

Thames Ditton, KT7 0NG

Guide Price £675,000

A delightful 2 bedroom cottage set in a secluded corner of the ever popular Harvest Lane development, in the heart of Thames Ditton village. Unlike others this benefits from a private gated walled courtyard to the front as well as a charming patio garden to rear, featuring a walled terrace to the side of the house. Presented well throughout, this is a light and bright property with fitted kitchen and large double reception to ground floor, downstairs WC, two generous double bedrooms upstairs with family bathroom. This house comes with parking and garage. Located within walking distance to the village, amenities and station.

- 2 Bedroom Cottage
- Gated private entrance
- Spacious Living Dining Room
- Garage
- Beautiful courtyard gardens
- Beautifully presented
- Off street parking
- Walking distance to village and station

# Floor Plan

## Harvest Lane

Approximate Gross Internal Area = 78.2 sq m / 842 sq ft

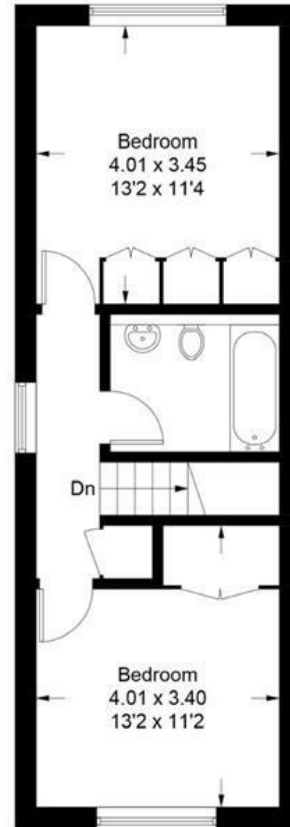
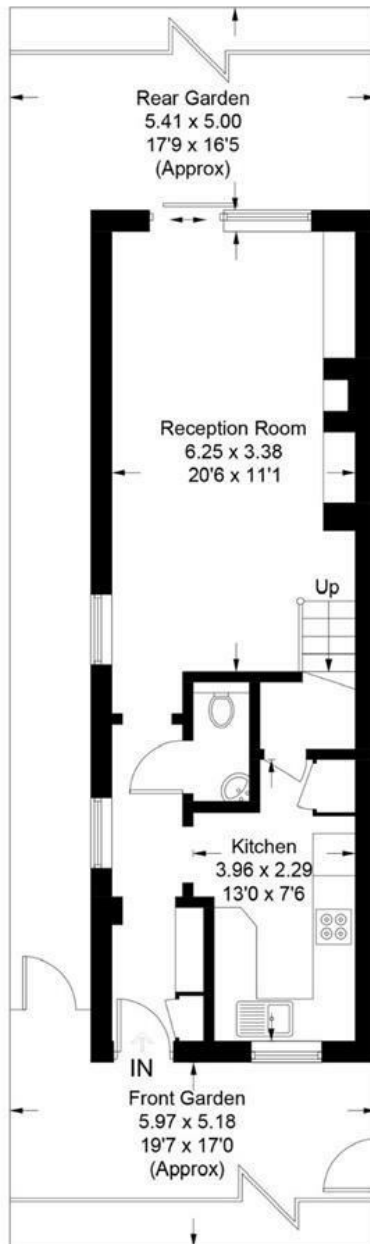
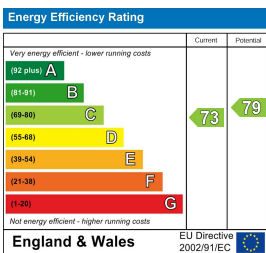


Illustration for identification purposes only, measurements are approximate, not to scale. Fourlabs.co © (ID1306766)

## Energy Efficiency Graph



These particulars, whilst believed to be accurate are set out as a general outline only for guidance and do not constitute any part of an offer or contract. Intending purchasers should not rely on them as statements of representation of fact, but must satisfy themselves by inspection or otherwise as to their accuracy. No person in this firm's employment has the authority to make or give any representation or warranty in respect of the property.