



3 Palmer Road London

A wonderful two bedroom apartment available in the highly sought after Prince of Wales development. The apartment features a large open plan living and kitchen area with separate private balcony. Finished to the highest standard, the property features fully integrated Siemens appliances. Centrally located the property resides steps away from Battersea Park and close to the shops and bars of Chelsea with excellent transport links including Battersea Park overground, Vauxhall and Battersea Power Station undergrounds. Residents will also enjoy the wonderful on site amenities including the pool and spa, roof top garden and 24 hour concierge.

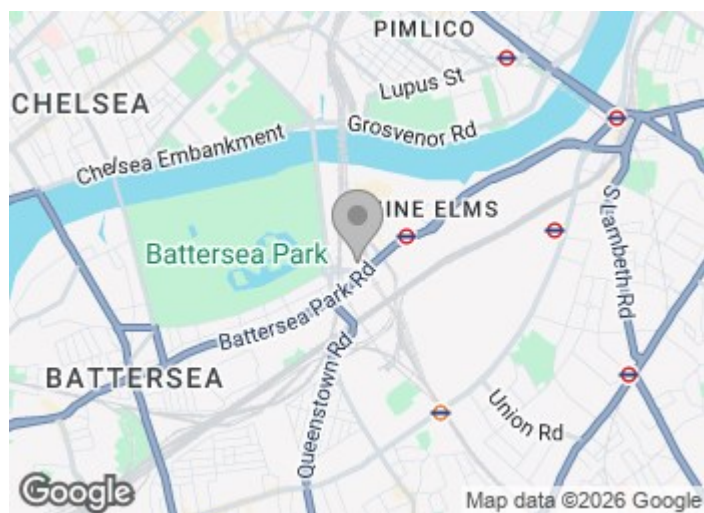
Council Tax Band: Wandsworth - F
Change of contract fee: £50 including VAT

£1,150 Per Week

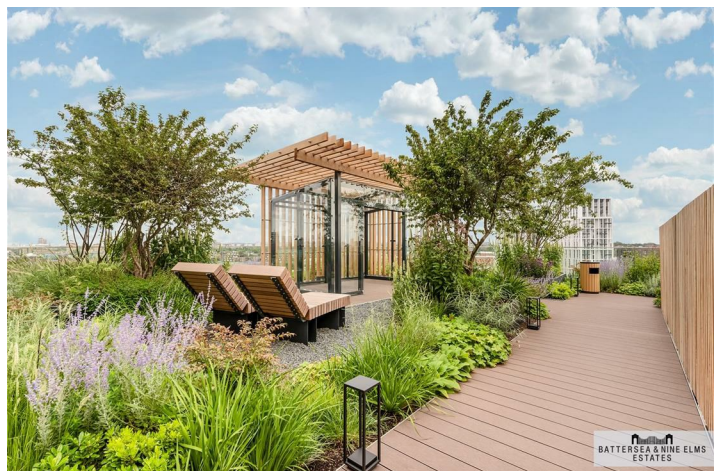
3 Palmer Road London



- Two bedroom
- Gym and spa
- Unfurnished
- Two bathroom (one ensuite)
- 24 hour concierge
- Private balcony
- Swimming pool



[Directions](#)



Kensington House,
 Prince Of Wales Drive, SW8
 Approximate Gross Internal Area
 98.57 sq m / 1,061 sq ft

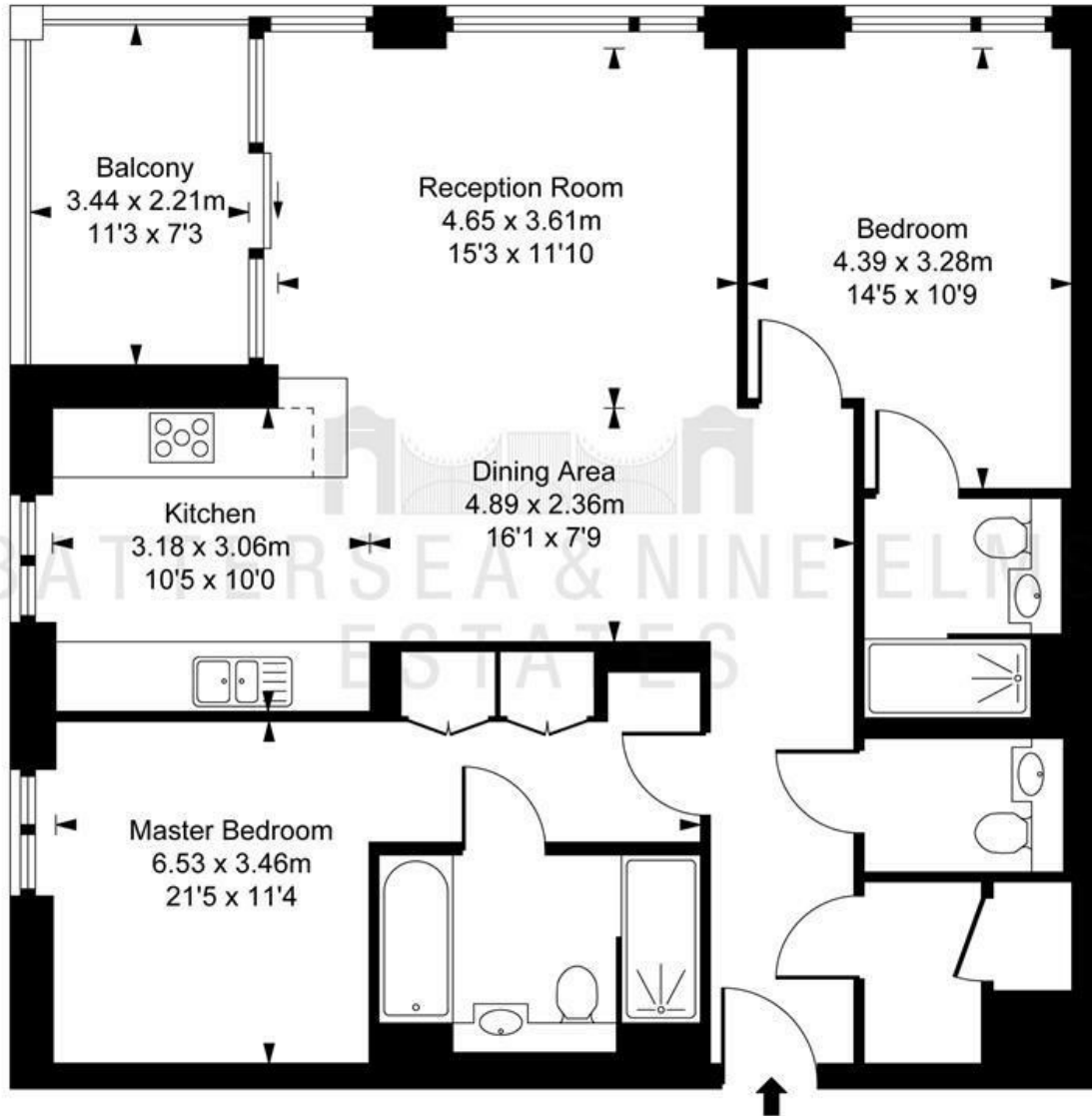


ILLUSTRATION FOR IDENTIFICATION PURPOSES ONLY
 ALL MEASUREMENTS AND AREA FIGURES SUPPLIED BY OTHERS, ACCURACY IS NOT GUARANTEED.
 THIS PLAN MUST NOT BE REPRODUCED BY ANY OTHER PERSON WITHOUT PERMISSION

These particulars, whilst believed to be accurate are set out as a general outline only for guidance and do not constitute any part of an offer or contract. Intending purchasers should not rely on them as statements of representation of fact, but must satisfy themselves by inspection or otherwise as to their accuracy. No person in this firm's employment has the authority to make or give any representation or warranty in respect of the property.

