

Kingston Road, SW20 £350,000

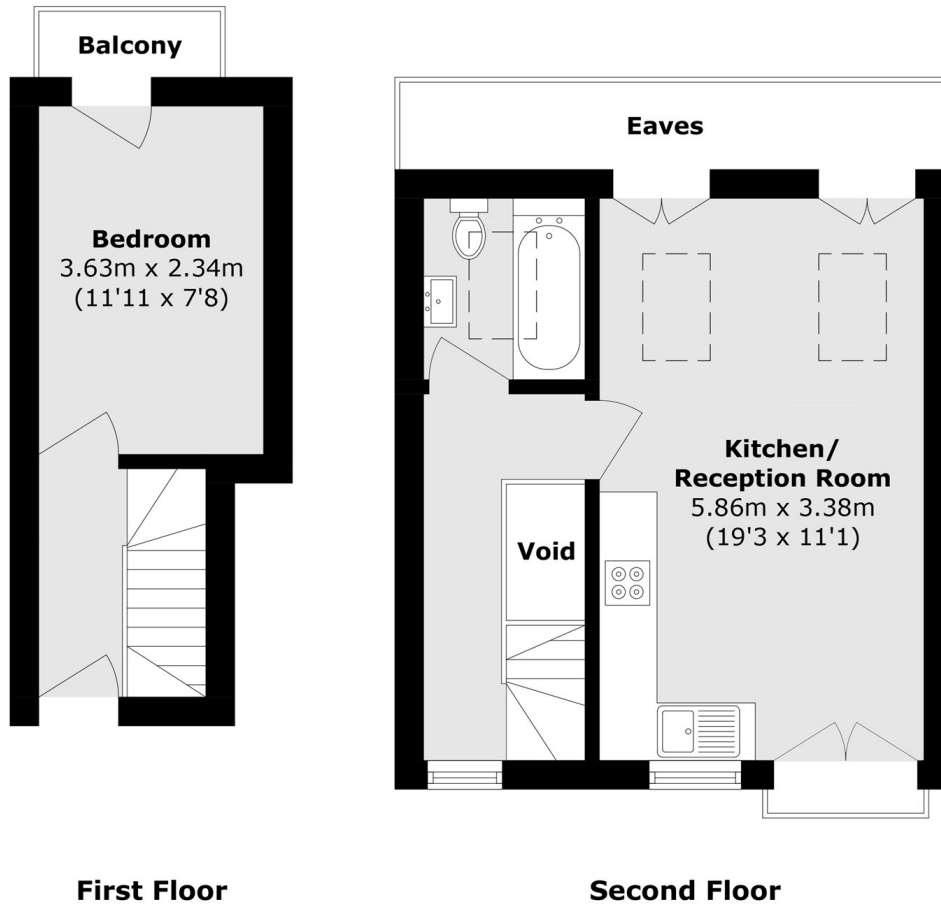
A one double bedroom, split level Victorian conversion apartment. The property has a lovely balcony to the front, with an open kitchen/ reception room and a share of freehold.

Perfectly located for Wimbledon Town Centre and Dundonald Park. Close to transport links with the District line, Northern line, Wimbledon Overground Station and The Broadway offering a range of entertainment.

Features

- Split Level
- One Double Bedroom
- Share Of Freehold
- Victorian Conversion
- Balcony To The Front
- Open Kitchen/ Reception

Kingston Road,
London, SW20



Total area (approx.): 42.2 sq. m (454.2 sq. ft)
Balcony area (approx.): 1.3 sq. m (14.1 sq. ft)
(Excluding Void)