



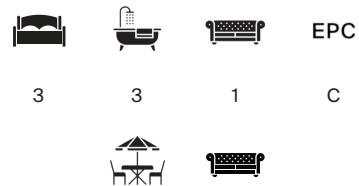
FARRIER WALK

Chelsea SW10



A BEAUTIFUL TOWNHOUSE WITH TERRACE AND PATIO

Arranged over three well-planned floors, this substantial family home offers flexible living space with the benefit of abundant natural light and generous outdoor areas.



Local Authority: Royal Borough of Chelsea and Kensington

Council Tax band: H

Tenure: Freehold

Guide Price: £2,950,000



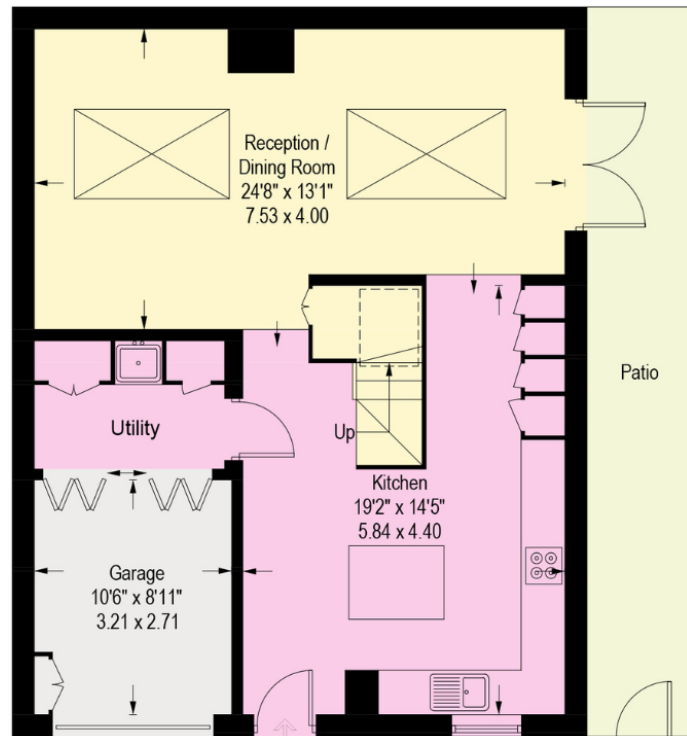
A STYLISH HOME PERFECT FOR ENTERTAINING

The ground floor centres around a stylish kitchen with excellent storage and a central island, making the perfect space to cook and entertain. The generous reception room with natural light and double doors onto the patio. A utility room and integral garage add valuable practicality. The first floor hosts a double bedroom with an en-suite shower room. A second double bedroom has excellent fitted wardrobes and is served by a separate family bathroom, conveniently located across the hallway. From the en-suite bedroom, doors open onto a wide terrace, which is a superb extension of the living space, offering an ideal setting for outdoor dining or relaxing. The top floor is home to an impressive principal bedroom suite, complete with a generous dressing area with bespoke cabinetry and an en-suite shower room with double sink, offering privacy. The home is thoughtfully arranged and has been meticulously renovated throughout.

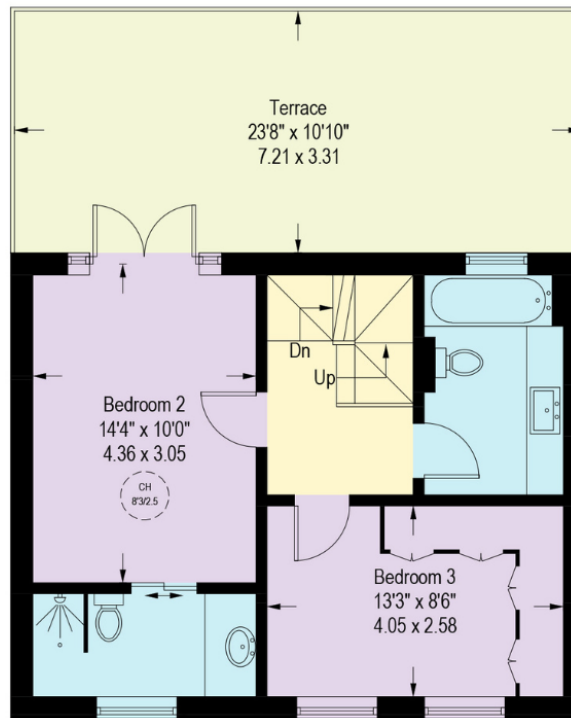




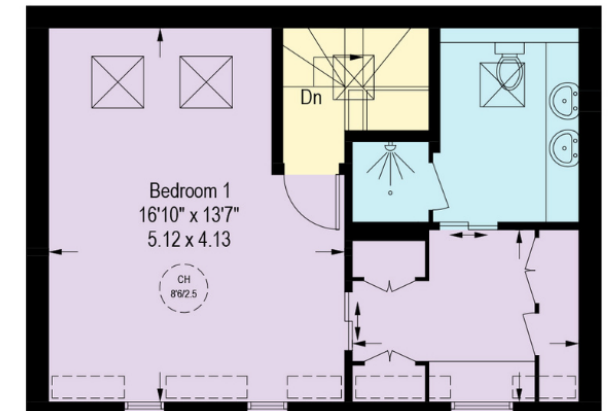




Ground Floor




First Floor



Second Floor



 = Reduced headroom below 1.5m / 5'0"

Farrier Walk, SW10
 Approximate Gross Internal Area = 144.3 sq m / 1553 sq ft Excluding Reduced Headroom
 Reduced Headroom = 2.8 sq m / 30 sq ft Total = 147.1 sq m / 1583 sq ft

This plan is for layout guidance only. Not drawn to scale unless stated. Windows and door openings are approximate. Whilst every care is taken in the preparation of this plan, please check all dimensions, shapes and compass bearings before making any decisions reliant upon them. (ID767266)

We would be delighted
to tell you more.

Claire Mengham

02039782462

claire.mengham@knightfrank.com

Knight Frank South Kensington & Chelsea

352A Kings Road

Chelsea, London SW3 5UU

[knightfrank.co.uk](https://www.knightfrank.co.uk)

Your partners in property

1. Particulars: These particulars are not an offer or contract, nor part of one. You should not rely on statements given by Knight Frank in the particulars, by word of mouth or in writing ("information") as being factually accurate about the property, its condition or its value. Neither Knight Frank nor any joint agent has any authority to make any representations about the property, and accordingly any information given is entirely without responsibility on the part of Knight Frank. 2. Material Information: Please note that the material information is provided to Knight Frank by third parties and is provided here as a guide only. While Knight Frank has taken steps to verify this information, we advise you to confirm the details of any such material information prior to any offer being submitted. If we are informed of changes to this information by the seller or another third party, we will use reasonable endeavours to update this as soon as practical. 3. Photos, Videos etc: The photographs, property videos and virtual viewings etc. show only certain parts of the property as they appeared at the time they were taken. Areas, measurements and distances given are approximate only. 4. Regulations etc: Any reference to alterations to, or use of, any part of the property does not mean that any necessary planning, building regulations or other consent has been obtained. A buyer must find out by inspection or in other ways that these matters have been properly dealt with and that all information is correct. 5. Fixtures and fittings: A list of the fitted carpets, curtains, light fittings and other items fixed to the property which are included in the sale (or may be available by separate negotiation) will be provided by the Seller's Solicitors. 6. VAT: The VAT position relating to the property may change without notice. 7. To find out how we process Personal Data, please refer to our Group Privacy Statement and other notices at <https://www.knightfrank.com/legals/privacy-statement>.

Particulars dated May 2026. Photographs and videos dated May 2026. All information is correct at the time of going to print. Knight Frank is the trading name of Knight Frank LLP. Knight Frank LLP is a limited liability partnership registered in England and Wales with registered number OC305934. Our registered office is at 55 Baker Street, London W1U 8AN. We use the term 'partner' to refer to a member of Knight Frank LLP, or an employee or consultant. A list of members names of Knight Frank LLP may be inspected at our registered office. If you do not want us to contact you further about our services then please contact us by either calling 020 3544 0692, email to marketing.help@knightfrank.com or post to our UK Residential Marketing Manager at our registered office (above) providing your name and address.