



LIVERY STREET, TOWN CENTRE

complete ●●●
SALES & LETTINGS





Within the heart of Leamington Spa a one bed, first floor apartment set within the popular development in Regent Court. The block was development in 2004 and offers; immaculate communal hallways and lift within block. The apartment itself offers; entrance hall with intercom, open plan living/kitchen, double bedroom and bathroom. Appliances include; fridge/freezer, dishwasher, electric oven and hob, extractor and stainless steel sink with mixer tap.

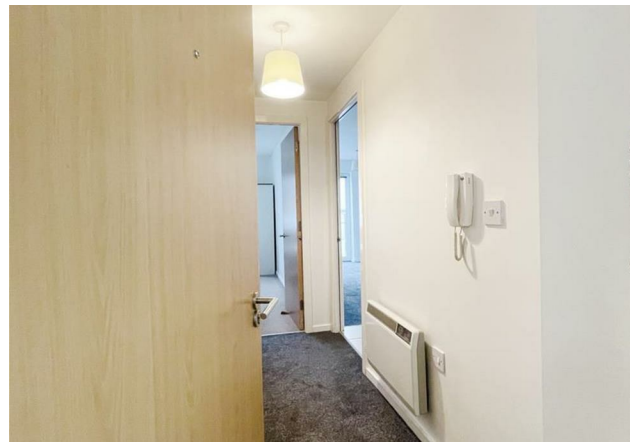


Available from 12th July 2026 - please call to arrange a viewing

Location

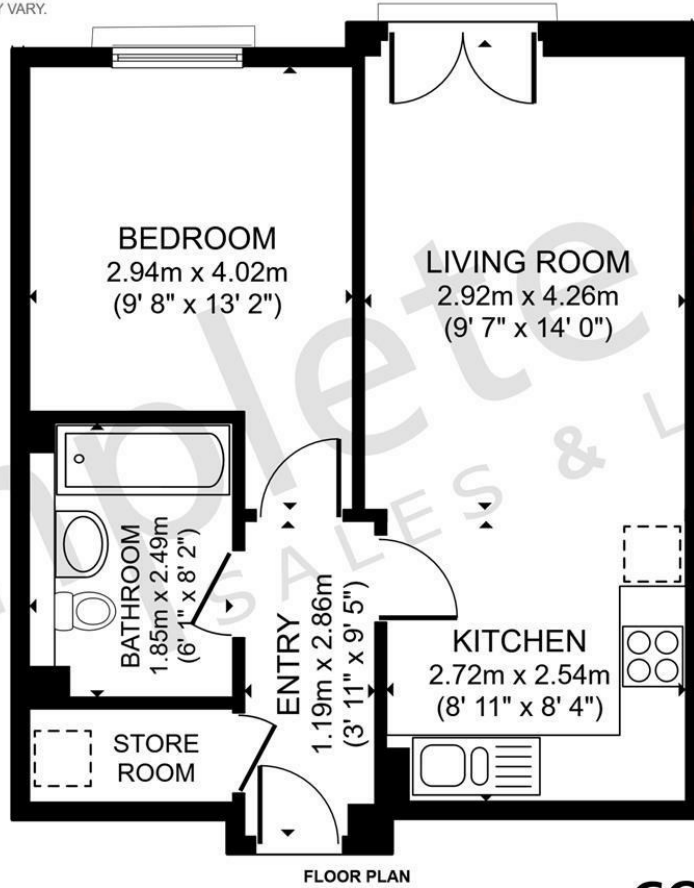
A stylish modern apartment block, in Leamington Spa, seconds from the vibrancy of The Parade, walking distance from the train station, from which hourly fast trains run to London Marylebone. Convenient for everything Leamington Spa has to offer - with its beautiful tree-lined avenues and parks and historical architecture. There is a great choice of diverse high street & boutique shops, 'spoilt for choice' restaurants, café's & bars, offering unique shopping, dining, recreational and cultural experiences. Leamington offers a range of excellent private and state schools. Leamington has recently been voted one of the most desirable places to live in the UK and is renowned for London commuters settling here, not just down to the station but the convenience of the close by M40 motorway networks .Available from 12th July 2026





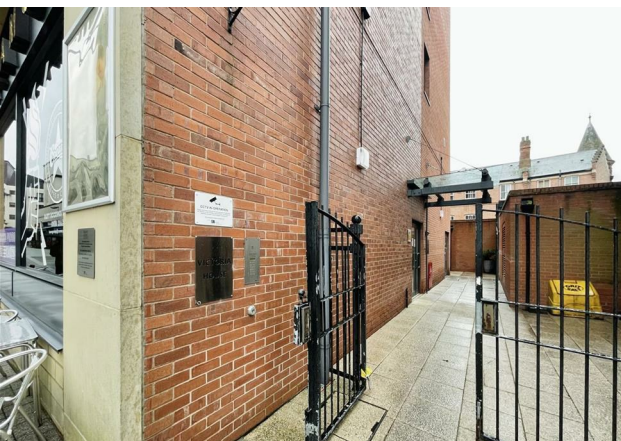
GROSS INTERNAL AREA
FLOOR PLAN 41.3 m² (445 sq.ft.)
EXCLUDED AREAS : BALCONY 3.7 m² (40 sq.ft.)
TOTAL : 41.3 m² (445 sq.ft.)

SIZES AND DIMENSIONS ARE APPROXIMATE, ACTUAL MAY VARY.



FLOOR PLAN

complete ●●●
SALES & LETTINGS

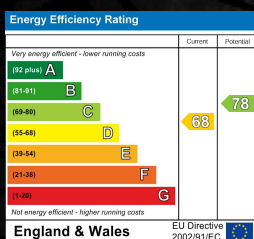


- One Bedroom
- Part Furnished
- First Floor
- Intercom Entrance

- Open Plan Living/Dining/Kitchen
- Available Immediately
- Secure Gated Development
- On Street Parking Only

LIVERY STREET, LEAMINGTON SPA

Viewing - Arrangements can be made by Complete Estate Agents on: 01926 887723



1 Binswood Street, Leamington Spa, Warwickshire, CV32 5RW
 Tel: 01926 887723
 sales@complete247.co.uk
 www.complete247.co.uk

complete ●●●●
 SALES & LETTINGS