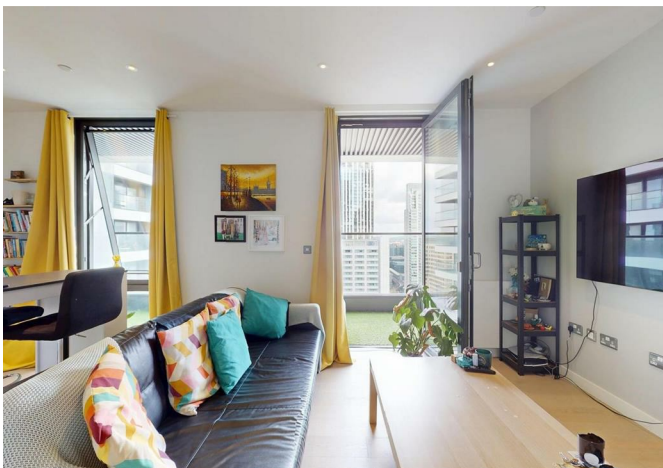


2 Wards Place, London, E14 9LE

£3,000 Per month



2 Wards Place, London, E14 9LE

£3,000 Per month

LONG LET - Luxury One-Bedroom Apartment with Stunning Views and long lease.

Barrain London is proud to present this exceptional one-bedroom apartment in the iconic Warden development, Canary Wharf. Featuring a full balcony with panoramic views over the dock and city skyline, this property offers a spacious open-plan lounge and dining area with modern integrated kitchen, a stylish bathroom, and a large double bedroom with fitted storage.

Residents enjoy world-class amenities including 24/7 concierge, fully equipped gym, swimming pool, sauna, cinema, and the exclusive 53rd-floor sky bar and lounge with breath-taking London views. Warden combines cutting-edge city living with tranquil green spaces, creating a rare urban oasis in Canary Wharf.

The location is unbeatable. Moments from Canary Wharf Underground (Jubilee & Elizabeth lines) and DLR, you have rapid access to the City, West and North London, Heathrow and City airports, Westfield Shopping Centre, Excel Exhibition Centre, and premier restaurants and entertainment venues.

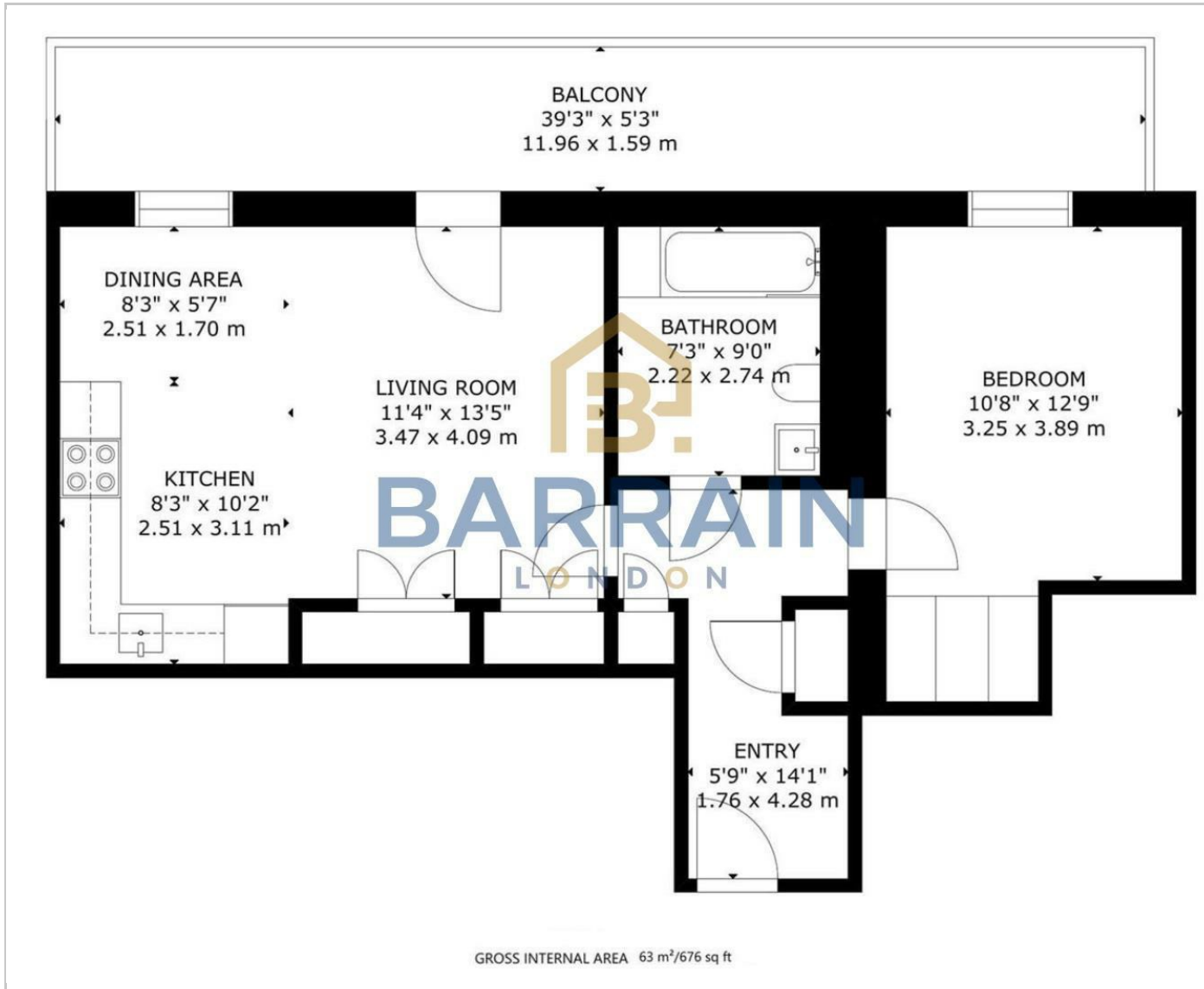
Key Features

- Stunning one bedroom luxury flat with dramatic views over the lock and Canary Wharf
- Full width balcony with access from lounge and bedroom
- Residents Gym / Pool / Private Cinema
- Excellent connections to the City & Greater London via DLR, Elizabeth Line, & Jubilee Line
- Exclusive sky lounge and cocktail bar in the building
- Exceptional dining, shopping, and entertainment options locally

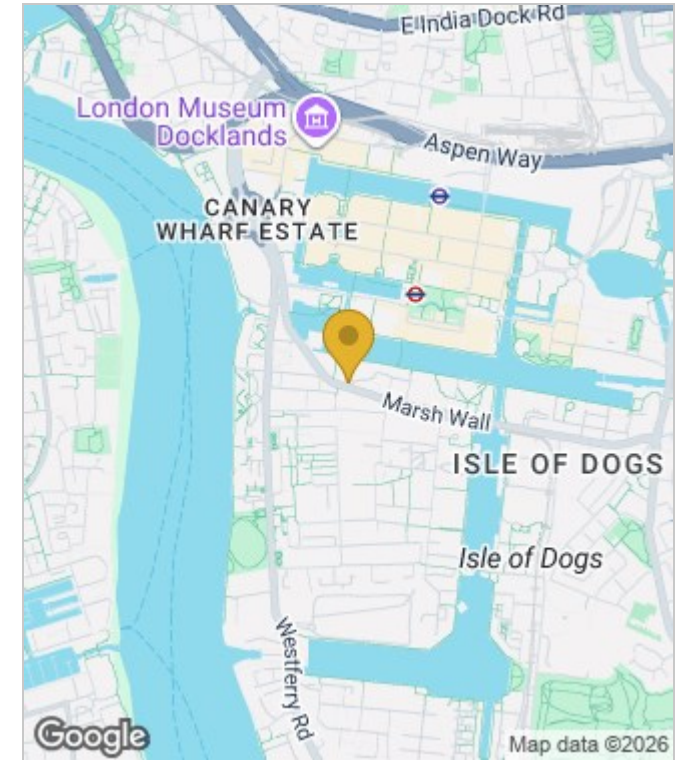


Council Tax Band: E

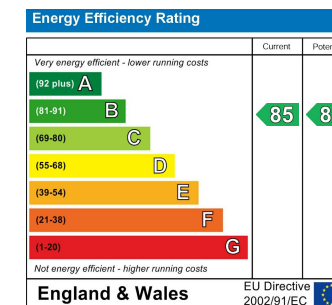
Floor Plans



Area Map



Energy Performance Graph



These particulars, whilst believed to be accurate are set out as a general outline only for guidance and do not constitute any part of an offer or contract. Intending purchasers should not rely on them as statements of representation of fact, but must satisfy themselves by inspection or otherwise as to their accuracy. No person in this firm's employment has the authority to make or give any representation or warranty in respect of the property.