



2



1



2



B

**DavidJames**  
the estate agent

**Renshaw Drive, Gedling, Nottingham, NG4 4LS**

**£995 Per Calendar Month**





## About This Property

This furnished first-floor apartment presents an excellent choice for professionals seeking close proximity to both Gedling and Mapperley's amenities as well as frequent bus services! Upon arrival, a communal entrance door with an intercom system provides secure access. A staircase leads up to the private entrance porch and hallway, which features convenient in-built storage cupboards. The open-plan living area is bright and spacious, offering a welcoming area to unwind. French doors open to a Juliet balcony, allowing plenty of natural light. An opening leads through to the kitchen, fitted with a range of units and integrated appliances including an oven, hob with extractor, dishwasher, fridge/freezer and a washer/dryer. The apartment includes two well-proportioned double bedrooms and the main bedroom benefits from an en-suite shower room with a three-piece suite, whilst the separate main bathroom completes the accommodation, featuring a three-piece suite with a shower over the bath. Outside, there is open access to a car park with one allocated parking space and additional visitor parking.

### TENANCY DETAILS

Available From: 12th January 2026

Tenancy Term: Minimum 6 months

Furnishing: Furnished

EPC Rating: B

Council Band: B

Pets: Not permitted

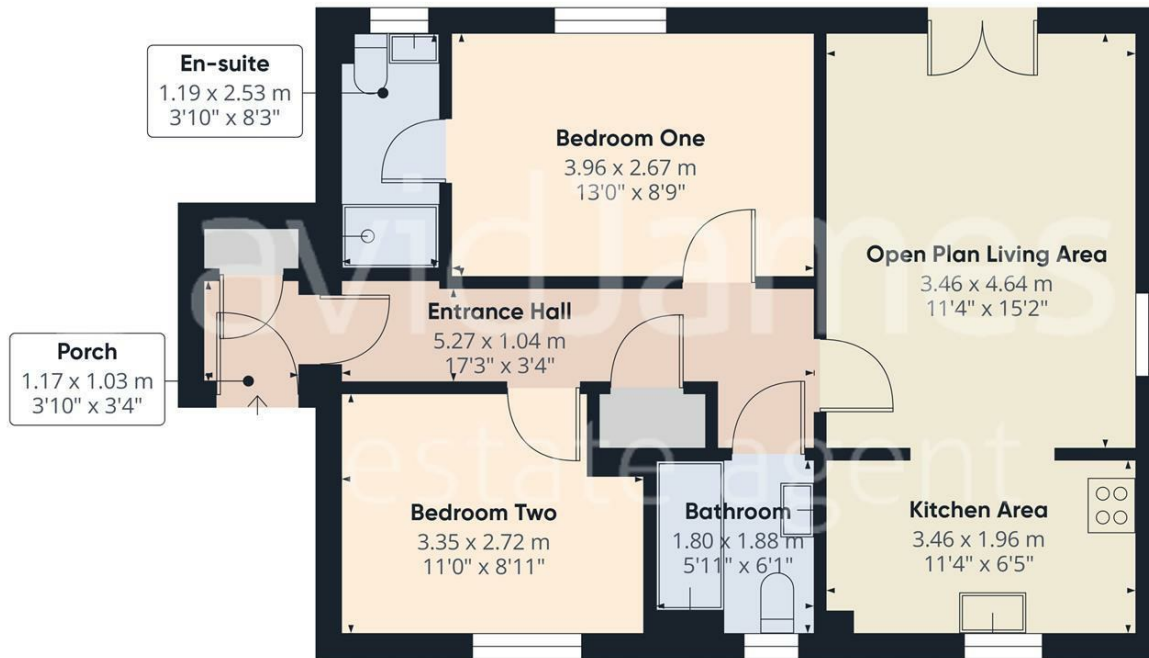
- Modern first floor apartment
- Furnished
- Two double bedrooms
- Two bathrooms including an en-suite shower room to bedroom one
- Bright open plan living area with a feature Juliet balcony
- Modern fitted kitchen with a range of integrated appliances
- Gas central heating, UPVC double glazing
- Communal entrance lobby with intercom system
- Allocated parking space with further open visitor parking
- Within easy reach of the stunning Gedling Country Park











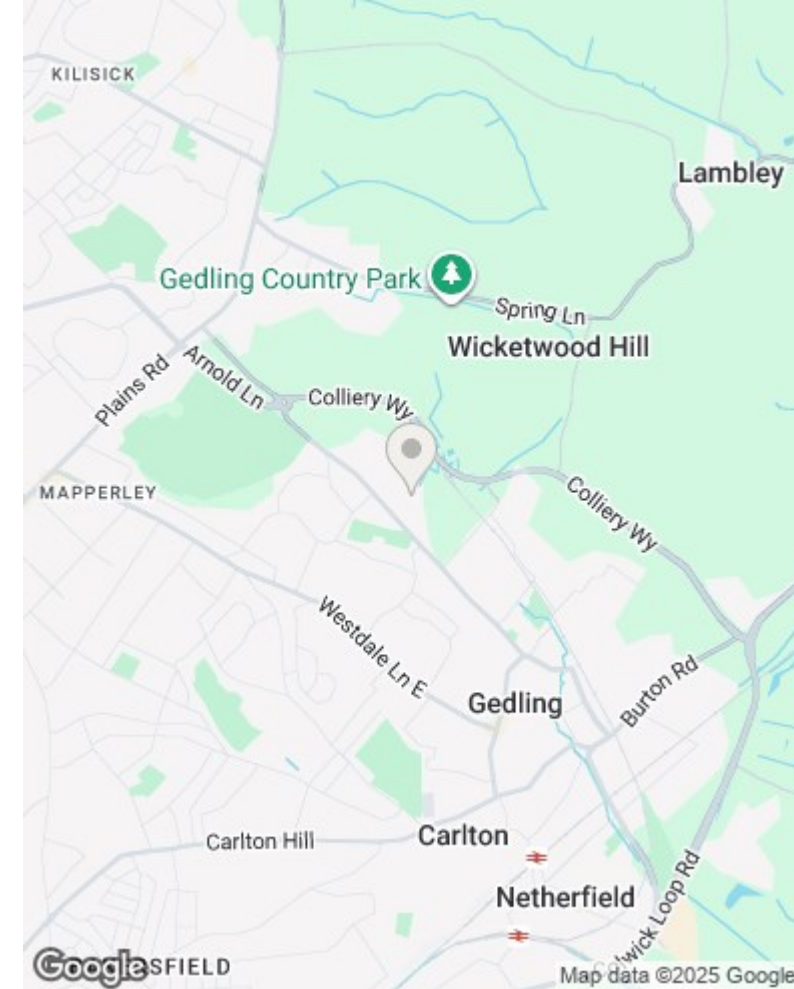
Approximate total area<sup>(1)</sup>  
58.3 m<sup>2</sup>  
628 ft<sup>2</sup>

(1) Excluding balconies and terraces

While every attempt has been made to ensure accuracy, all measurements are approximate, not to scale. This floor plan is for illustrative purposes only.

Calculations are based on RICS IPMS 3C standard.

GIRAFFE360



**Council Tax Band: B**  
**Gedling Borough Council**

These particulars are produced in good faith, are set out as a general guide only and do not constitute any part of a contract. No person in the employment of David James Estate Agents Ltd has any authority to make any representation whatsoever in relation to the property. All services, together with electrical fittings or fitted appliances have NOT been tested. All the measurements given in the details are approximate. Floor plans are for illustrative purposes only and are not drawn to scale. The position and size of doors, windows, appliances and other features are approximate only. The photographs of this property have been taken with a 10mm wide-angle lens. No responsibility can be accepted for any loss or expense incurred in viewing. If you have a property to sell you may wish to take advantage of our free valuation service. David James Estate Agents have established professional relationships with third-party suppliers for the provision of services to Clients. As remuneration for this professional relationship, the agent receives referral commission from the third-party company. David James Estate Agents receives the following commission from each third party supplier on a per referral basis: W A Barnes Ltd: £60 including VAT. All Moves UK Ltd: 18% including VAT of the invoice total (£107 including VAT average). MoveWithUs Limited: £188 including VAT (average).

**DavidJames**  
the estate agent

David James Estate Agents  
45b Plains Road, Mapperley, Nottingham, NG3 5JU  
t: 0115 962 4213 e: lettings@david-james.com

naea | propertymark  
**PROTECTED**

**The Property  
Ombudsman**