



Leroy Street, SE1

£2,600 Per calendar month

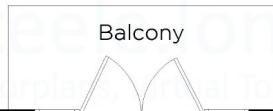
A warmly presented two bedroom two bathroom apartment, with a spacious open-plan kitchen living room and private balcony. Garage available upon request.

Perfectly positioned for access to both London Bridge and Borough Stations, with the ever popular Bermondsey Street just moments away.

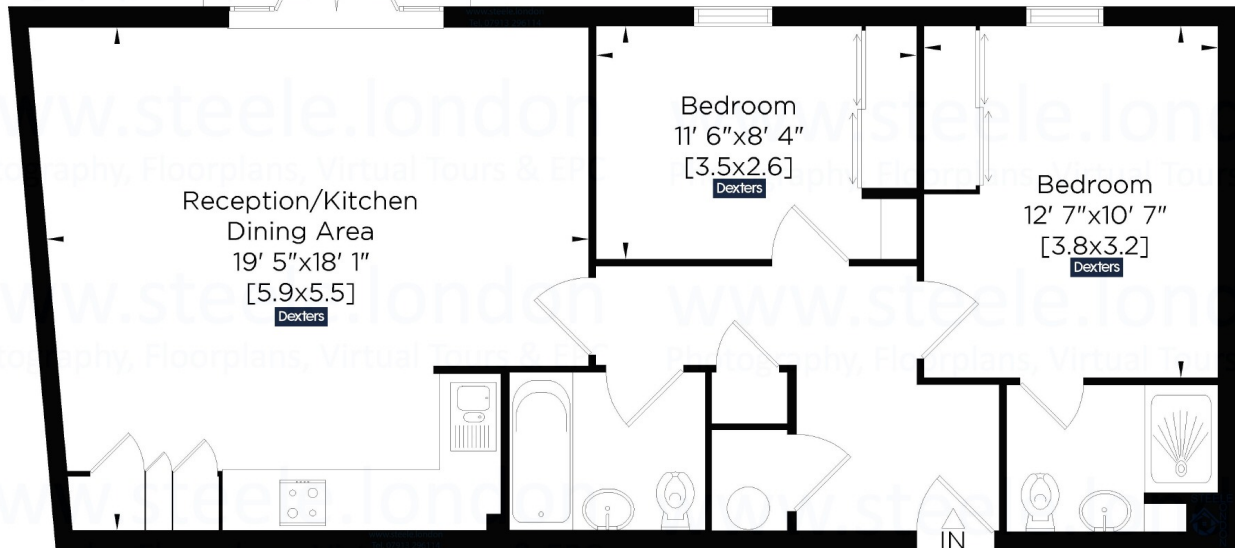
Features

- Optional Garage
- Two Bathrooms
- Over 750sqft
- Open Plan
- Private Balcony
- Bike Storage

Leroy Street, London, SE1



Leroy Street SE1
Gross Internal Area:
71 Sq. metres
763 Sq. feet



Prepared for Dexters Estate Agents www.dexters.co.uk To Let 2 Bedroom Flat with Balcony Leroy Street SE1
Whilst every attempt has been made to ensure the accuracy of this Lettings floor plan, measurements of doors, windows, rooms and Sq. footage are approximate. The actual property will vary. For identification purposes only. Not to be used as part of the decision to buy. Price on application for a 90 day licence to use this plan. No appliances tested. ©21102023. Not to scale.
Photography, Drone, Video, Floor Plans, Matterport Virtual Tours & EPC
by www.steele.london - Email: patricia@steele.london - Tel: 07847 219401

Second Floor