



St. Leonards Court

St. Leonards Road, East Sheen, SW14

£2,300 per month
(£530.77 per week)

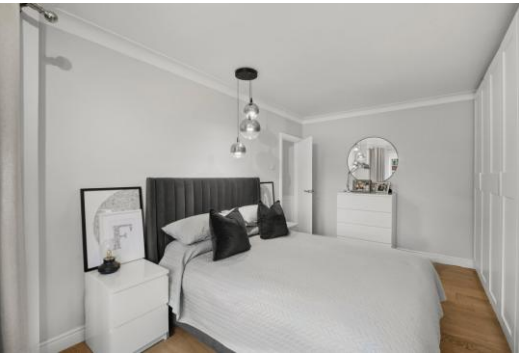
Set within the highly sought-after St Leonards Court development, this beautifully refurbished first-floor apartment offers stylish, contemporary living in an excellent location. Just a short walk from Mortlake Station, the amenities of East Sheen and several Ofsted Outstanding schools, it combines convenience with a high standard of finish throughout.

The apartment has been thoughtfully updated, featuring attractive wall panelling, wooden flooring and tasteful décor that create a warm and welcoming feel. The principal bedroom is particularly impressive, with a full wall of bespoke fitted wardrobes and a charming bay window area that works equally well as a reading corner, home office space or dressing area.

The second bedroom is currently arranged as a child's room but offers excellent flexibility. It could easily serve as a guest bedroom, study or nursery, depending on your needs.

St Leonards Court is a well-regarded development known for its strong community feel and desirable location. Residents benefit from easy access to East Sheen's popular shops, cafés, restaurants and supermarkets, as well as excellent transport links into central London.

CHESTERTONS



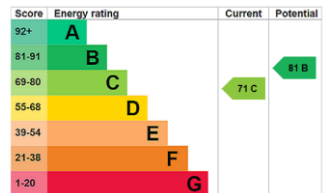
St. Leonards Court

St. Leonards Road, East Sheen, SW14

- Refurbished Apartment
- Two Bedrooms
- First Floor
- Close to Station



Minimum Term: 12 months
Deposit Required: £2,653.85
Local Authority: Richmond upon Thames
Council Tax Band: D
EPC Rating: C
Unfurnished

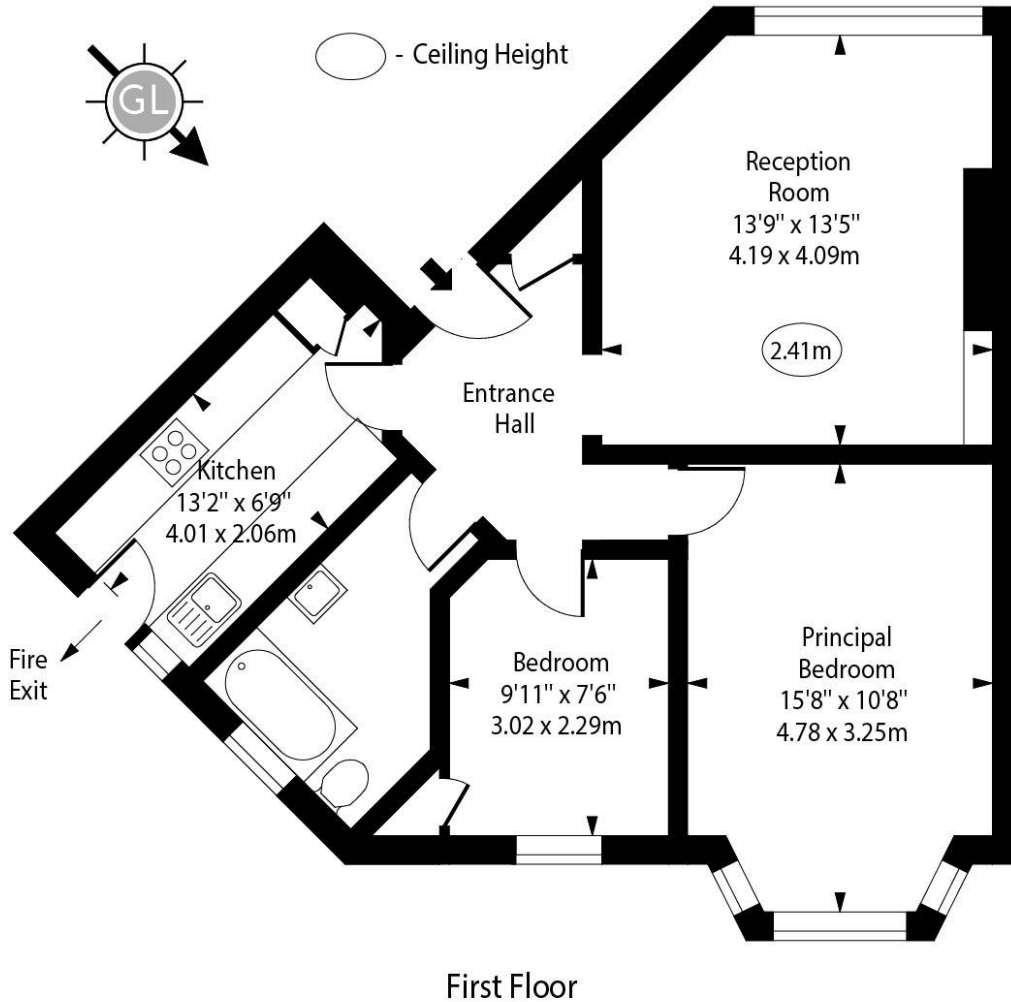


Chestertons East Sheen Lettings

254a Upper Richmond Road West
 East Sheen
 London
 SW14 8AG
 sheenlettingsusers@chestertons.co.uk
 02081040580
 chestertons.co.uk

Additional tenant charges apply (fees apply to non-AST tenancies only)
 Tenancy Agreement Fee: £300
 References per Tenant/Guarantor: £60
 Inventory check (approx. £100 – £250 inc. VAT)
chestertons.co.uk/property-to-rent/applicable-fees

St. Leonards Court,
St. Leonards Road,
East Sheen, SW14



Approx Gross Internal Area 650 Sq Ft - 60.39 Sq M

Every attempt has been made to ensure the accuracy of the floor plan shown. However, all measurements, fixtures, fittings, and data shown are approximate interpretations and for illustrative purposes only. Measured according to the RICS. Not To Scale.

www.goldlens.co.uk
Ref. No. 030334E